

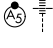
WAAS CH <b>78204</b> <b>W09A</b>	APP CRS <b>093°</b>	Rwy Idg <b>7709</b> TDZE <b>660</b> Apt Elev <b>680</b>
--	------------------------	---

# RNAV (GPS) RWY 9R

CHICAGO O'HARE INTL (ORD)

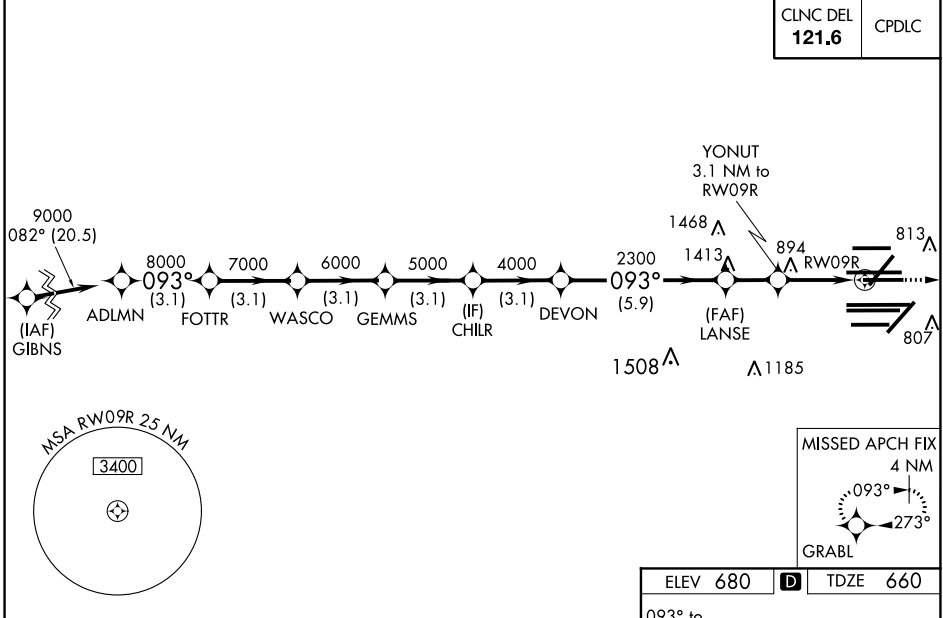
RADAR required for procedure entry. RNP APCH.

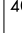

**∇** Simultaneous approach authorized. For uncompensated Baro-VNAV systems, LNAV/VNAV NA below -19°C or above 54°C. LNAV procedure NA during simultaneous operations. Use of FD or AP providing RNAV track guidance required during simultaneous operations. For inop ALS, increase LNAV/VNAV all Cats visibility to RVR 6000, and LNAV Cat C/D visibility to 1 3/8 SM.

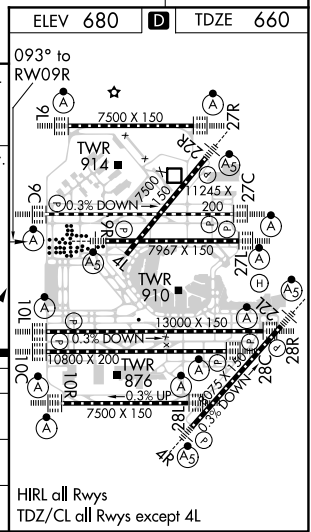
MALSR  
  
 MISSED APPROACH:  
 Climb to 4000 direct  
 GRABL and hold.

D-ATIS <b>135.4</b> <b>282.225</b>	CHICAGO APP CON <b>119.0 292.125</b>	O'HARE TOWERS <b>128.15 348.0</b> (Rwy 9L/27R) <b>133.0 348.0</b> (10R/28L) <b>120.75 121.15 126.9 132.7 348.0</b> (CENTER)	GND CON (TWR NORTH) <b>124.125</b> (TWR SOUTH) <b>118.05</b> (ALL TWS) <b>226.675</b>	(TWR CENTER) <b>121.75</b> (OBND) (IBND) <b>121.9</b>
--	--	---	---	--

CLNC DEL <b>121.6</b>	CPDLC
--------------------------	-------



VGSi and RNAV glidepath not coincident (VGSi Angle 3.00/TCH 74).		4000	GRABL					
* LNAV only.								
ADLMN	FOTTR	WASCO	GEMMS	CHILR	DEVON	LANSE	YONUT	3.1 NM to RWY 9R
9000	8000	7000	6000	5000	4000	2300	1700	1.3 NM to RWY 9R
GP 3.00° TCH 57								
	3.1 NM	3.1 NM	3.1 NM	3.1 NM	3.1 NM	5.9 NM	1.9 NM	1.8
CATEGORY	A		B		C		D	
LPV DA	860/18		200 (200-1/2)					
LNAV/VNAV DA	1070/40		410 (400-3/4)					
LNAV MDA	1160/24		500 (500-1/2)		1160/50		500 (500-1)	



EC-3, 25 MAR 2021 to 22 APR 2021

EC-3, 25 MAR 2021 to 22 APR 2021