

WAAS CH 77937 W10D	APP CRS 090°	Rwy Idg TDZE Apt Elev	7500 680 680
--	------------------------	-----------------------------	---

RNAV (GPS) Y RWY 10R

CHICAGO O'HARE INTL (ORD)

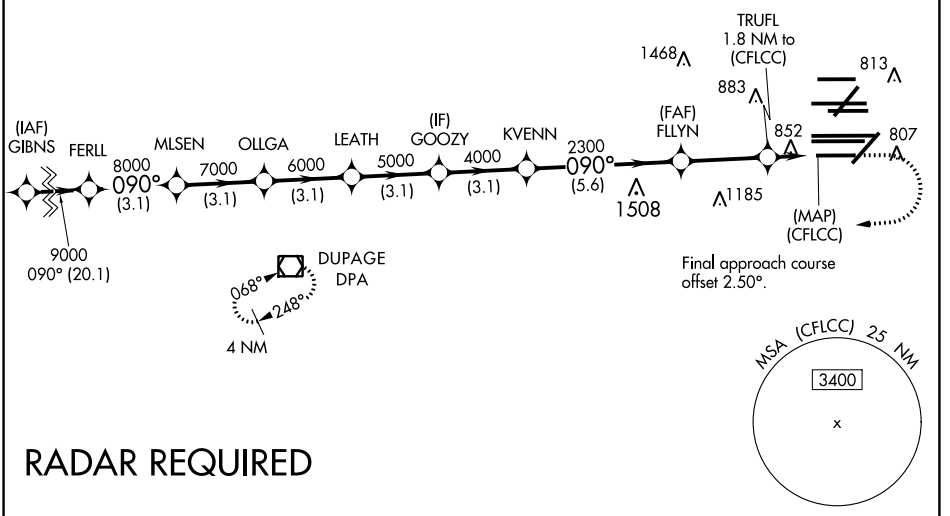
▼ DME/DME RNP-0.3 NA. Simultaneous approach authorized. For uncompensated Baro-VNAV systems, LNAV/VNAV NA below -19°C (-2°F) or above 54°C (130°F). LNAV procedure NA during simultaneous operations. Use of FD or AP providing RNAV track guidance required during simultaneous operations. Inop table does not apply to LPV all Cats. For inop ALS, increase LNAV Cat A and B visibility to 1 SM. Rwy 10R helicopter visibility reduction below ¾ SM NA.

ALSF-2

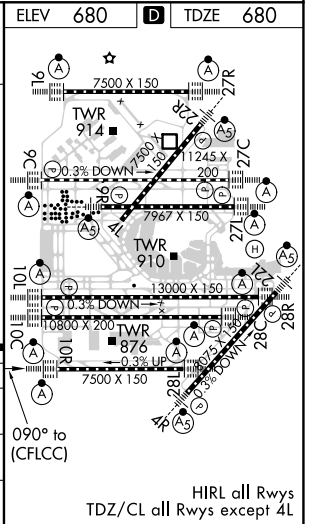
MISSED APPROACH: Climb to 1200 then climbing right turn to 4000 direct DPA VOR/DME and hold.

D-ATIS 135.4 282.225	CHICAGO APP CON 119.0 292.125	O'HARE TOWERS 128.15 348.0 (Rwy 9L/27R) 133.0 348.0 (10R/28L) 120.75 121.15 126.9 132.7 348.0 (CENTER)				GND CON (TWR NORTH) 124.125 118.05 (TWR SOUTH) 226.675 (ALL TWRs)	(TWR CENTER) 121.75 (OBND) 121.9 (IBND)
--	---	--	--	--	--	---	---

CLNC DEL 121.6	CPDLC
--------------------------	-------



	1200	4000	DPA	ELEV 680	TDZE 680				
	*LNAV only.								
	9000	8000	7000	6000	5000	4000	2300	*1300	1.2
	GP 3.00								
	TCH 55								
		3.1 NM	3.1 NM	3.1 NM	3.1 NM	3.1 NM	5.6 NM	3.1 NM	0.6
CATEGORY	A	B		C		D			
LPV DA		930-¾		250 (300-¾)					
LNAV/VNAV DA		1157-1½		477 (500-1½)					
LNAV MDA		1120-¾		440 (500-¾)					



EC-3, 25 MAR 2021 to 22 APR 2021

EC-3, 25 MAR 2021 to 22 APR 2021