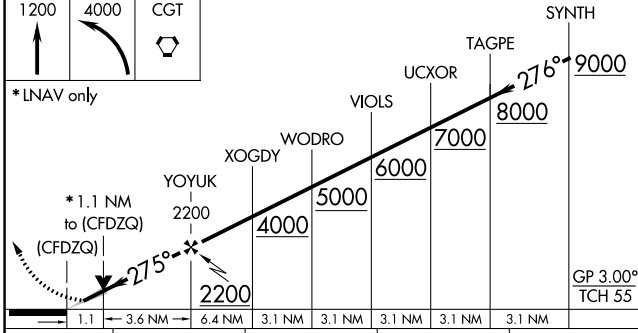
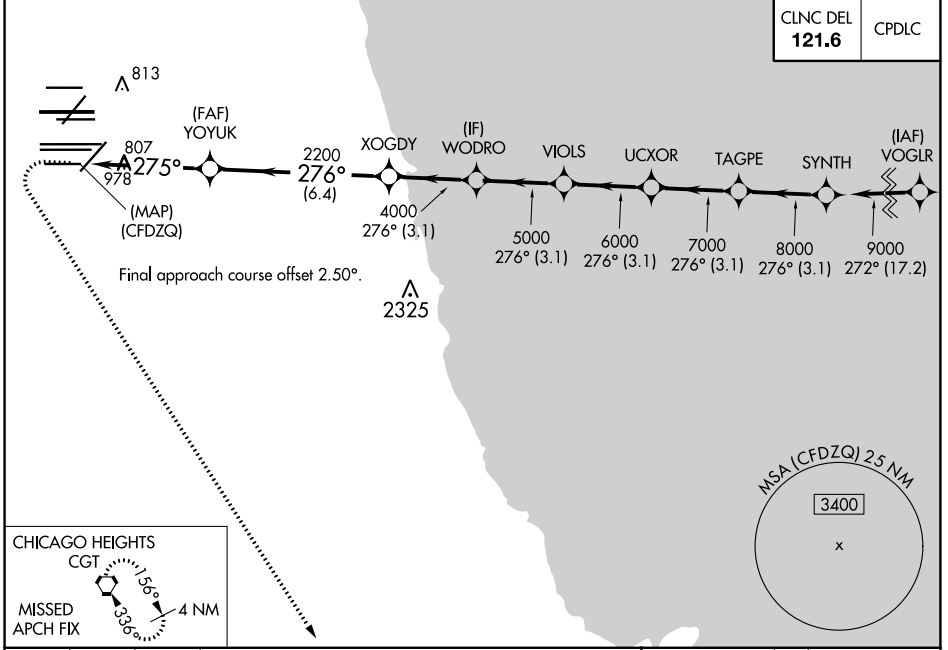


WAAAS CH <b>93839</b> <b>W28E</b>	APP CRS <b>275°</b>	Rwy Idg TDZE <b>667</b> Apt Elev <b>680</b>	<b>7500</b> <b>667</b> <b>680</b>
---	------------------------	---	---

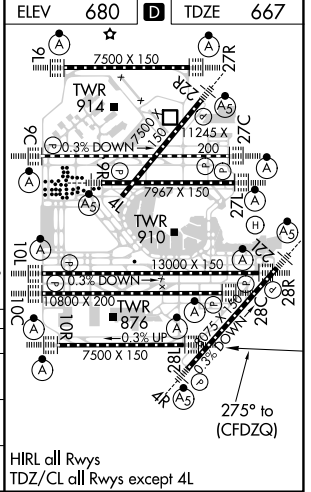
# RNAV (GPS) Y RWY 28L

CHICAGO O'HARE INTL (ORD)

RNP APCH: Simultaneous approach authorized. LNAV procedure NA during simultaneous operations. For uncompensated Baro-VNAV systems, LNAV/VNAV NA below -19°C or above 54°C. Use of FD or AP required during simultaneous operations.		ALSF-2 	MISSED APPROACH: Climb to 1200 then climbing left turn to 4000 direct CGT VORTAC and hold.
D-ATIS <b>135.4</b> <b>282.225</b>	CHICAGO APP CON <b>119.0 292.125</b>	O'HARE TOWERS <b>128.15 348.0</b> (Rwy 9L/27R) <b>133.0 348.0</b> (10R/28L) <b>120.75 121.15 126.9 132.7 348.0</b> (CENTER)	GND CON (TWR CENTER) <b>124.125</b> (TWR NORTH) <b>121.75</b> (OBND) (TWR SOUTH) <b>118.05</b> (TWR SOUTH) <b>121.9</b> (IBND) <b>226.675</b> (ALL TWS)



CATEGORY	A	B	C	D
LPV DA		917/24	250 (300-1/2)	
LNAV/VNAV DA		1090/40	423 (500-3/4)	
LNAV MDA	1060/24	393 (400-1/2)	1060/35	393 (400-5/8)



EC-3, 25 MAR 2021 to 22 APR 2021

EC-3, 25 MAR 2021 to 22 APR 2021