

| | | | |
|--|------------------------|-----------------------------|---|
| WAAS CH 99340 W10E | APP CRS 093° | Rwy Idg TDZE Apt Elev | 7500 680 680 |
|--|------------------------|-----------------------------|---|

RNAV (GPS) Z RWY 10R

CHICAGO O'HARE INTL (ORD)

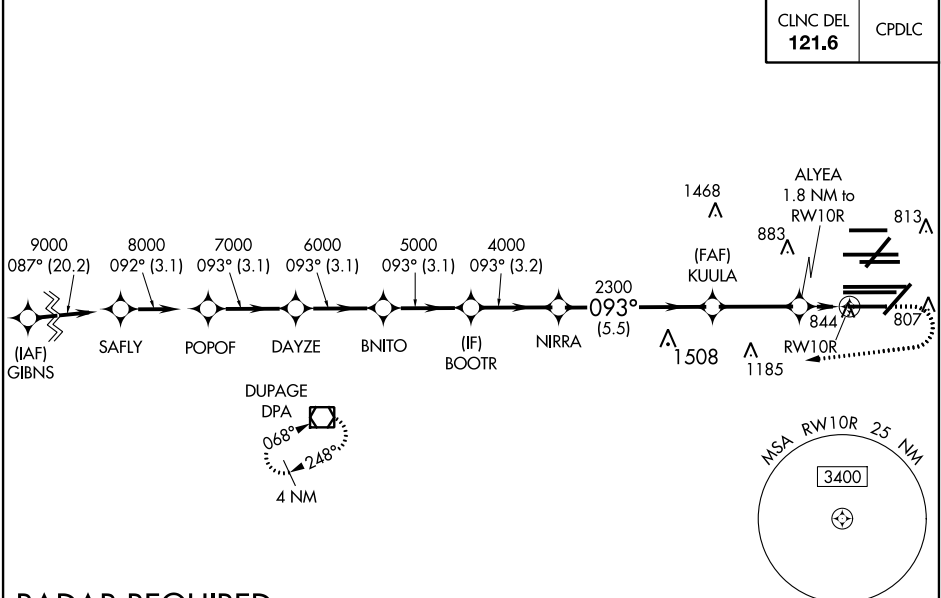
▼ For uncompensated Baro-VNAV systems, LNAV/VNAV NA below -19°C (-2°F) or above 54°C (130°F). Simultaneous approach authorized. Use of FD or AP providing RNAV track guidance required during simultaneous operations. LNAV procedure NA during simultaneous operations. DME/DME RNP-0.3 NA. For inop ALS, increase LNAV Cat C and D visibility to RVR 6000.

ALS-F-2

MISSED APPROACH: Climb to 1200 then climbing right turn to 4000 direct DPA VOR/DME and hold.

| | | | | |
|--|---|--|--|---|
| D-ATIS 135.4 282.225 | CHICAGO APP CON 119.0 292.125 | O'HARE TOWERS (Rwy 9L/27R) 133.0 348.0 (10R/28L) 120.75 121.15 126.9 132.7 348.0 (CENTER) | GND CON (TWR NORTH) 124.125 (TWR SOUTH) 118.05 (ALL TWRs) 226.675 | (TWR CENTER) 121.75 (RBDN) 121.9 |
|--|---|--|--|---|

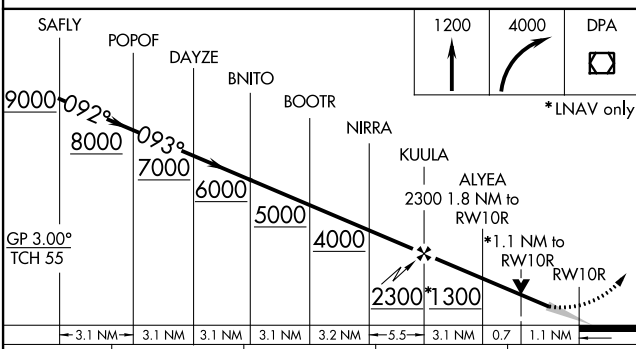
| | |
|--------------------------|-------|
| CLNC DEL 121.6 | CPDLC |
|--------------------------|-------|



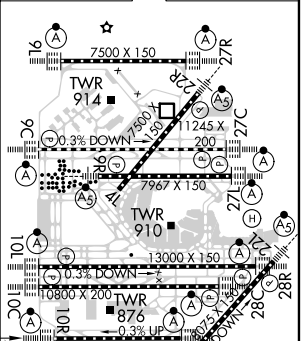
EC-3, 25 MAR 2021 to 22 APR 2021

EC-3, 25 MAR 2021 to 22 APR 2021

RADAR REQUIRED



| | | |
|----------|----------|----------|
| ELEV 680 | D | TDZE 680 |
|----------|----------|----------|



| | | | | |
|--------------|---------|-------------|-------------|-------------|
| CATEGORY | A | B | C | D |
| LPV DA | | 881/18 | 201 (300-½) | |
| LNAV/VNAV DA | | 1122/50 | 442 (500-1) | |
| LNAV MDA | 1100/24 | 420 (500-½) | 1100/40 | 420 (500-¾) |

HIRL all Rwys
TDZ/CL all Rwys except 4L