

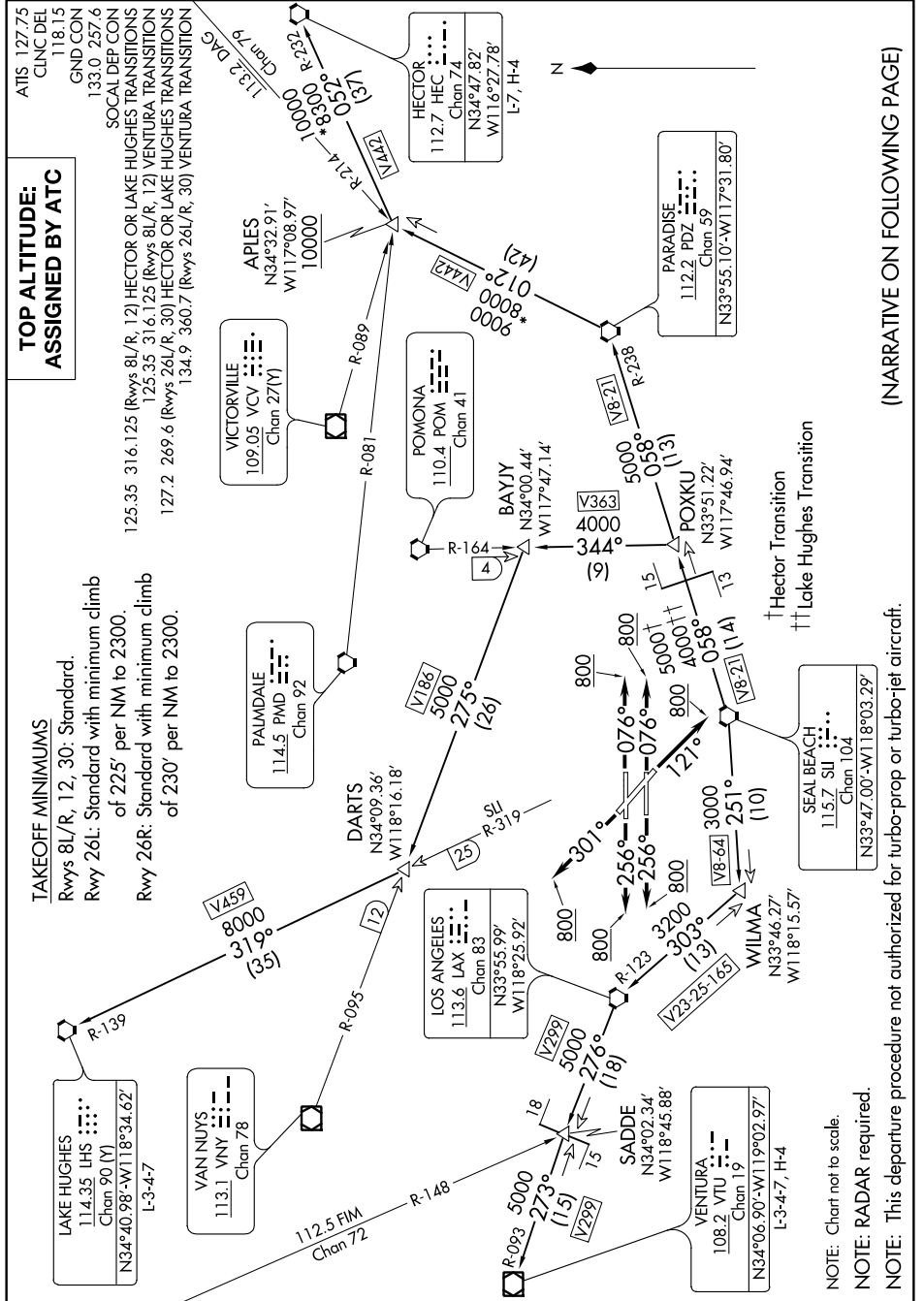
# ANAHEIM ONE DEPARTURE

AL-236 (FAA)

LONG BEACH/DAUGHERTY FIELD (LGB)

LONG BEACH, CALIFORNIA

SW-3, 25 MAR 2021 to 22 APR 2021



**TOP ALTITUDE:  
ASSIGNED BY ATC**

**TAKEOFF MINIMUMS**  
Rwys 8L/R, 12, 30: Standard.  
Rwy 26L: Standard with minimum climb of 225' per NM to 2300.  
Rwy 26R: Standard with minimum climb of 230' per NM to 2300.

**ATIS 127.75**  
CLINCDEL 118.15  
GND CON 133.0 257.6  
SOCAL DEP CON  
125.35 316.125 (Rwys 8L/R, 12) HECTOR OR LAKE HUGHES TRANSITIONS  
125.35 316.125 (Rwys 8L/R, 12) VENTURA TRANSITION  
127.2 269.6 (Rwys 26L/R, 30) HECTOR OR LAKE HUGHES TRANSITIONS  
134.9 360.7 (Rwys 26L/R, 30) VENTURA TRANSITION

NOTE: Chart not to scale.  
NOTE: RADAR required.  
NOTE: This departure procedure not authorized for turbo-prop or turbo-jet aircraft.

(NARRATIVE ON FOLLOWING PAGE)

# ANAHEIM ONE DEPARTURE

LONG BEACH, CALIFORNIA

LONG BEACH/DAUGHERTY FIELD (LGB)

SW-3, 25 MAR 2021 to 22 APR 2021