

(JDUBB4.JDUBB) 20366

EASTERN WV RGNL/SHEPHERD FIELD (M.R.B)

JDUBB FOUR DEPARTURE (RNAV) AL-249 (FAA)

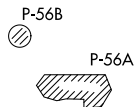
MARTINSBURG, WEST VIRGINIA

ASOS 119.925
 CLNC DEL
 121.8 257.65
 132.075 269.075 (When twr closed)
 GND CON
 121.8 257.65
 MARTINSBURG TOWER ★
 124.3 (CTAF) 233.7
 POTOMAC DEP CON
 126.825 239.025

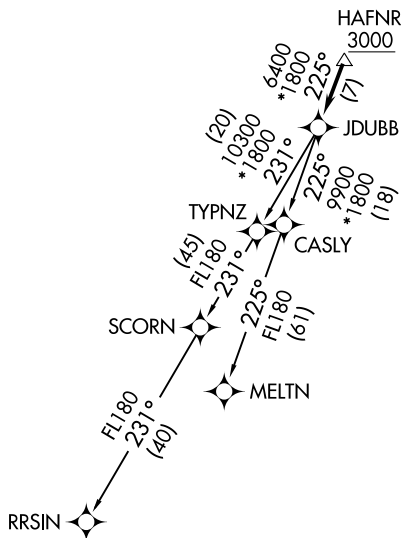
TOP ALTITUDE:
3000

TAKEOFF MINIMUMS

Rwy 8: Standard.
 Rwy 26: Standard with a minimum
 climb of 225' per NM to 2100.



- NOTE: RNAV 1.
 NOTE: RADAR required.
 NOTE: DME/DME/IRU or GPS required.
 NOTE: Turbo-jets only.
 NOTE: Takeoff Rwy 8: If issued an ATC heading that requires a westbound turn, climb heading 081° to 1200 prior to turning for obstacle avoidance.
 NOTE: Takeoff Rwy 26: If issued an ATC heading that requires a right turn, climb heading 261° to 2400 prior to turning for obstacle avoidance.



DEPARTURE ROUTE DESCRIPTION

Climb on heading assigned by ATC, expect RADAR vectors to HAFNR, then on track 225° to JDUBB, thence. . . .
 on assigned transition, maintain 3000, expect clearance to filed altitude within ten (10) minutes after departure.

MELTN TRANSITION (JDUBB4.MELTN)
RRSIN TRANSITION (JDUBB4.RRSIN)

NOTE: Chart not to scale.

JDUBB FOUR DEPARTURE (RNAV)
 (JDUBB4.JDUBB) 31DEC20

MARTINSBURG, WEST VIRGINIA
 EASTERN WV RGNL/SHEPHERD FIELD (M.R.B)

NE-4, 25 MAR 2021 to 22 APR 2021

NE-4, 25 MAR 2021 to 22 APR 2021