

**(TRIXY5.TRIXY) 20310**  
**TRIXY FIVE DEPARTURE**

EASTERN WV RGNL/SHEPHERD FIELD (MRB)

AL-249 (FAA)

MARTINSBURG, WEST VIRGINIA

ASOS  
 119.925  
 CLNC DEL  
 121.8 257.65  
 132.075 269.075 (When Tower Closed)  
 GND CON  
 121.8 257.65  
 MARTINSBURG TOWER\*  
 124.3 (CTAF) 233.7  
 POTOMAC DEP CON  
 126.825 239.025

**TAKEOFF MINIMUMS**

Rwy 8: Standard.  
 Rwy 26: Standard with minimum climb  
 of 300' per NM to 5000'.

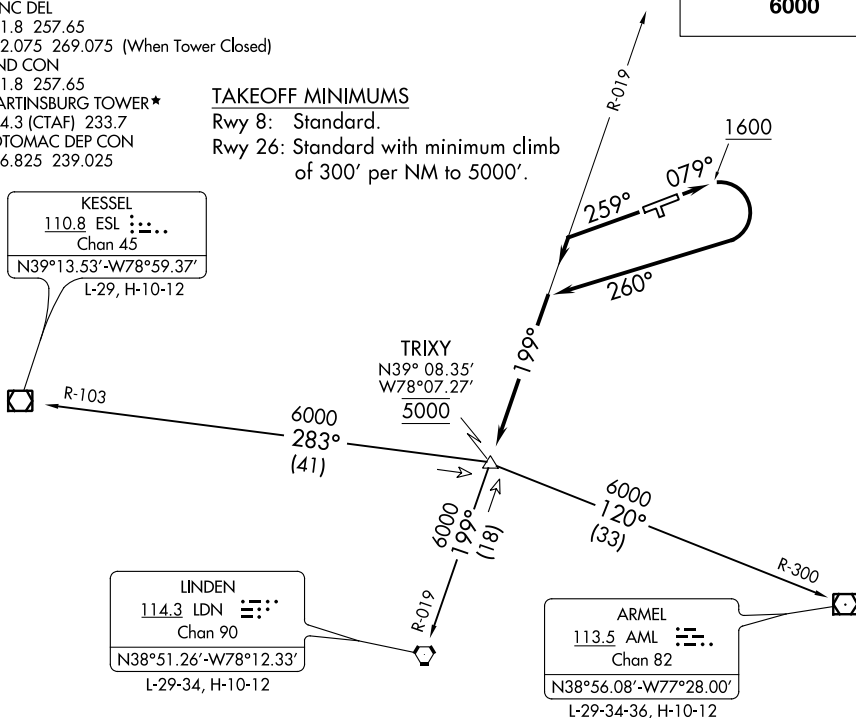
**TOP ALTITUDE:  
 6000**

KESSEL  
 110.8 ESL  
 Chan 45  
 N39°13.53'-W78°59.37'  
 L-29, H-10-12

TRIXY  
 N39° 08.35'  
 W78°07.27'  
 5000

LINDEN  
 114.3 LDN  
 Chan 90  
 N38°51.26'-W78°12.33'  
 L-29-34, H-10-12

ARMEL  
 113.5 AML  
 Chan 82  
 N38°56.08'-W77°28.00'  
 L-29-34-36, H-10-12



NE-4, 25 MAR 2021 to 22 APR 2021

NE-4, 25 MAR 2021 to 22 APR 2021

Note: Chart not to scale.

**DEPARTURE ROUTE DESCRIPTION**

**TAKEOFF RUNWAY 8:** Climb heading 079° to 1600, then climbing right turn heading 260° to intercept LDN VORTAC R-019 to cross TRIXY INT at 5000, then on transition or assigned route, thence . . .

**TAKEOFF RUNWAY 26:** Climb heading 259° to intercept LDN VORTAC R-019 to cross TRIXY INT at 5000, then on transition or assigned route, thence . . .  
 . . . maintain 6000, expect filed altitude/flight level ten minutes after departure.

**ARMEL TRANSITION (TRIXY5.AML):** From over TRIXY INT on AML R-300 to AML VOR/DME.

**KESSEL TRANSITION (TRIXY5.ESL):** From over TRIXY INT on ESL R-103 to ESL VOR/DME.

**LINDEN TRANSITION (TRIXY5.LDN):** From over TRIXY INT on LDN R-019 to LDN VORTAC.

**TRIXY FIVE DEPARTURE**  
**(TRIXY5.TRIXY) 31MAR16**

MARTINSBURG, WEST VIRGINIA

EASTERN WV RGNL/SHEPHERD FIELD (MRB)