

ILS or LOC RWY 28

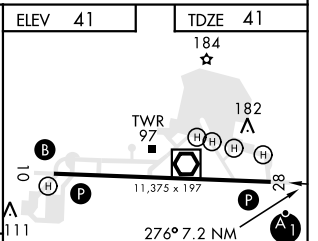
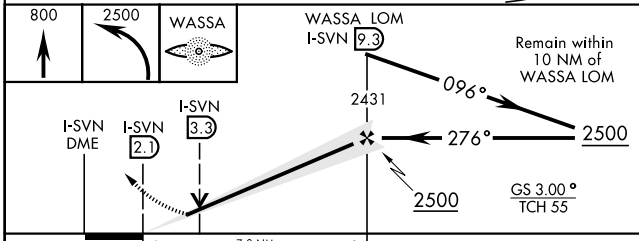
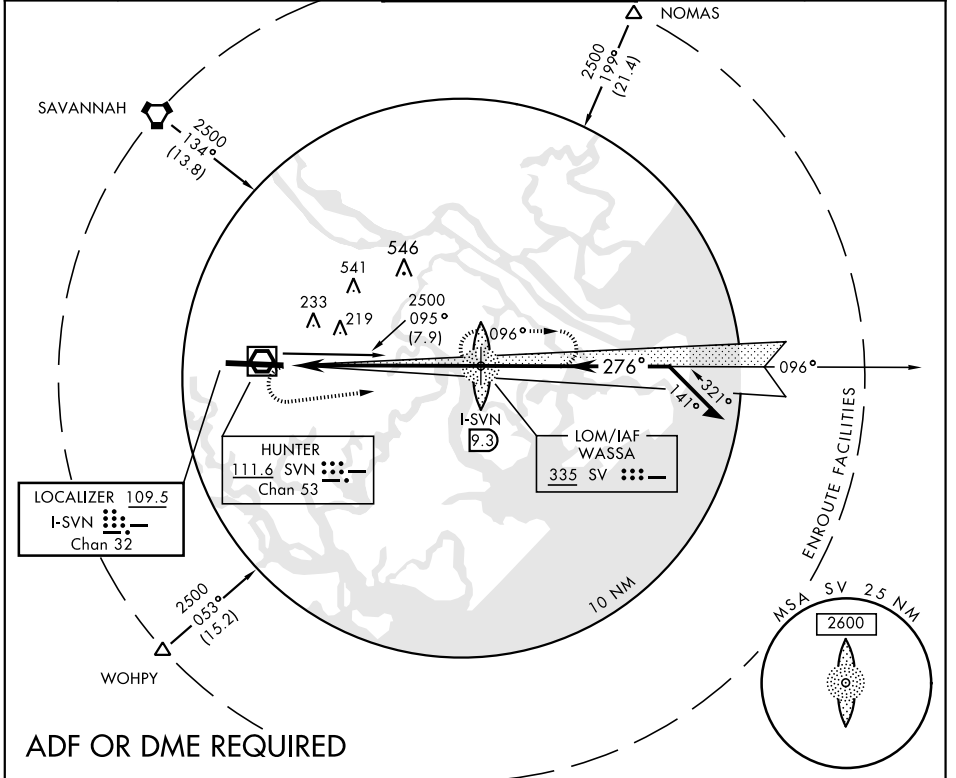
LOC/DME I-SVN 109.5 Chan 32	APCH CRS 276°	Rwy Ldg 11,375 TDZE 41 Arprt Elev 41
---	-------------------------	---

AL-381 [USA]

HUNTER AAF (KSVN)

<p>⚠ * Circling NA N of Rwy 10-28 for CAT D.</p>		<p>MISSED APPROACH: Climb to 800, then climbing left turn to 2500 direct WASSA LOM and hold.</p>
--	--	--

<p>ATIS 127.525 323.125</p>	<p>SAVANNAH APP CON 120.4 353.775</p>	<p>HUNTER TOWER ★ 124.975 (CTAF) 279.575</p>	<p>GND CON 121.8 291.675</p>	<p>ASR/PAR</p>
---	--	---	---	----------------



CATEGORY	A	B	C	D
S-ILS 28	241/24	200	(200-½)	
S-LOC 28	460/24 419 (500-½)	460/40 419 (500-¾)	460/50 419 (500-1)	
CIRCLING *	500-1 459 (500-1)	520-1 479 (500-1)	520-1½ 479 (500-1½)	600-2 559 (600-2)

REIL Rwy 10	
HIRL Rwy 10-28	
FAF to MAP 7.2 NM	
Knots	60 90 120 150 180
Min:Sec	7:12 4:48 3:36 2:53 2:24

ILS or LOC RWY 28

SE-4, 25 MAR 2021 to 22 APR 2021

SE-4, 25 MAR 2021 to 22 APR 2021