

# RNAV (GPS) RWY 28

WAAS CH <b>82111</b> <b>W28A</b>	APCH CRS <b>276°</b>	Rwy ldg <b>11,375</b> TDZE <b>41</b> Arpt Elev <b>41</b>
----------------------------------------	-------------------------	----------------------------------------------------------------

AL-381 [USA]

HUNTER AAF (KSVN)

DME/DME RNP -0.3 NA.

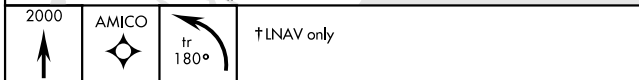
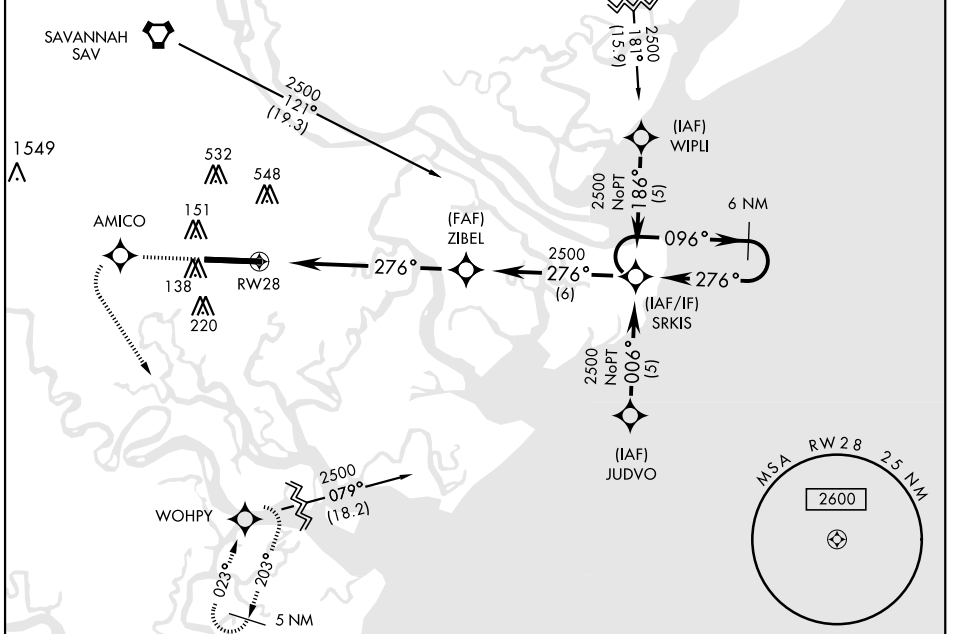
▼ \*Circling not authorized N of Rwy 10-28 for CAT D.



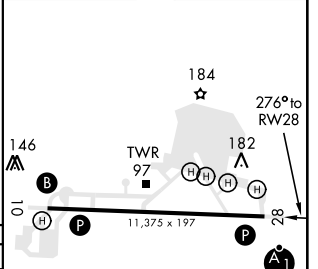
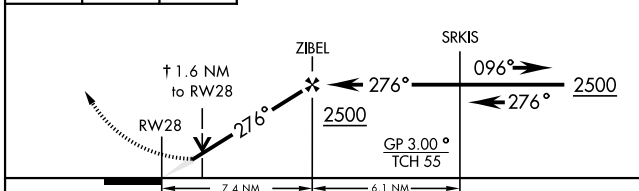
MISSED APPROACH: Climb to 2000 direct AMICO and left turn on track 180° to WOHPY and hold.

ATIS <b>127.525</b> <b>323.125</b>	SAVANNAH APP CON <b>120.4 353.775</b>	TOWER ★ <b>124.975</b> (CTAF) <b>0 279.575</b>	GND CON <b>121.8 291.675</b>	ASR/PAR
------------------------------------------	------------------------------------------	---------------------------------------------------	---------------------------------	---------

For uncompensated Baro-VNAV systems, LNAV/VNAV NA below -15° C (5°F) or above 49° C (120°F)



ELEV	41	TDZE	41
------	----	------	----



CATEGORY	A	B	C	D
LPV DA	241/24		200 (200-½)	
LNAV/VNAV DA	487/50		446 (500-1)	
LNAV MDA	600/24	559 (600-½)	600/50 559 (600-1)	600/60 559 (600-¼)
CIRCLING*	600-1	559 (600-1)	600-1½ 559 (600-1½)	600-2 559 (600-2)

HIRL Rwy 10-28	Ⓛ
REIL Rwy 10	Ⓛ

# RNAV (GPS) RWY 28

SE-4, 25 MAR 2021 to 22 APR 2021

SE-4, 25 MAR 2021 to 22 APR 2021