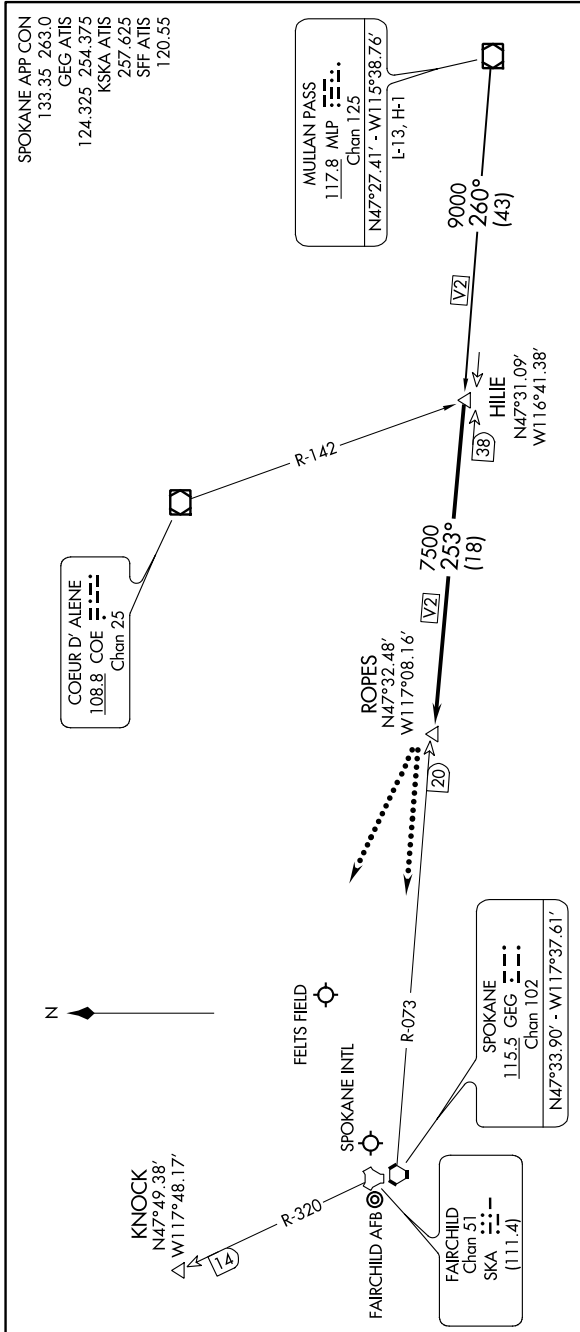


# HILIE TWO ARRIVAL (HILIE.HILIE2)

AL-403 (FAA)

SPOKANE, WASHINGTON

NW-1, 25 MAR 2021 to 22 APR 2021



SPOKANE APP CON  
 133.35 263.0  
 GEG ATIS  
 124.325 254.375  
 KSKA ATIS  
 257.625  
 SFF ATIS  
 120.55

MULLAN PASS  
 117.8 MLP  
 Chan 125  
 N47°27.41' - W115°38.76'  
 L-13; H-1

COEUR D'ALENE  
 108.8 COE  
 Chan 25

ROPEES  
 N47°32.48'  
 W117°08.16'

SPOKANE  
 115.5 GEG  
 Chan 102  
 N47°33.90' - W117°37.61'

FAIRCHILD  
 Chan 51  
 SKA  
 (111.4)

NOTE: DME and RADAR required.  
 NOTE: Chart not to scale.

## ARRIVAL ROUTE DESCRIPTION

MULLAN PASS TRANSITION (MLP.HILIE2): From over MLP VOR/DME via MLP R-260 to HILIE INT. Thence. . . .

. . . . From over HILIE INT via GEG R-073 to ROPEES. Expect radar vectors to final approach course.

LOST COMMUNICATIONS: After ROPEES:

Landing Spokane Intl or Felts Field: Proceed to GEG VORTAC via GEG R-073, maintain last assigned altitude to GEG.

Landing Fairchild AFB: Proceed to KNOCK via direct, maintain last assigned altitude to KNOCK.

# HILIE TWO ARRIVAL (HILIE.HILIE2)

SPOKANE, WASHINGTON

NW-1, 25 MAR 2021 to 22 APR 2021