

FOOXX FIVE ARRIVAL (RNAV)

TAMPA, FLORIDA

TAMPA APP CON
 118.8 239.3
 KCMF ATIS
 133.825 270.1
 PIE ATIS
 134.5
 TPA D-ATIS ARR
 126.45
 VDF AWOS-3
 121.125

ARRIVAL ROUTE DESCRIPTION

HEVNVN TRANSITION (HEVNVN.FOOXX5)

From TABIR on track 156° to DIPAY.

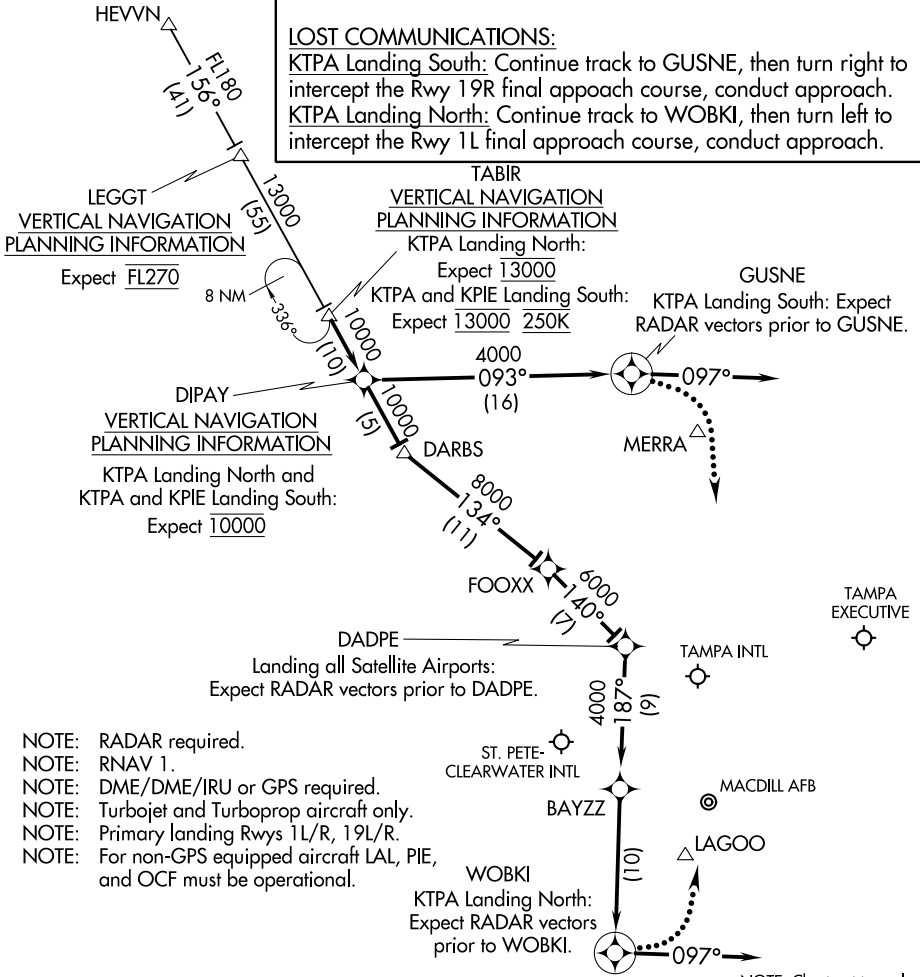
KTPA Landing North Rwy 1L/R and all Satellite Airports: From DIPAY on track 156° to DARBS, then on track 134° to FOOXX, then on track 140° to DADPE, then on track 187° to BAYZZ, then on track 187° to WOBKI, then on heading 097° or as assigned by ATC. Expect RADAR vectors to final approach course.

KTPA Landing South Rwy 19L/R: From DIPAY on track 093° to GUSNE, then on heading 097° or as assigned by ATC. Expect RADAR vectors to final approach course.

LOST COMMUNICATIONS:

KTPA Landing South: Continue track to GUSNE, then turn right to intercept the Rwy 19R final approach course, conduct approach.

KTPA Landing North: Continue track to WOBKI, then turn left to intercept the Rwy 1L final approach course, conduct approach.



LEGGT
 VERTICAL NAVIGATION
 PLANNING INFORMATION
 Expect FL270

TABIR
 VERTICAL NAVIGATION
 PLANNING INFORMATION
 KTPA Landing North:
 Expect 13000

DIPAY
 VERTICAL NAVIGATION
 PLANNING INFORMATION
 KTPA Landing North and
 KTPA and KPIE Landing South:
 Expect 10000

KTPA and KPIE Landing South:
 Expect 13000 250K

GUSNE
 KTPA Landing South: Expect
 RADAR vectors prior to GUSNE.

DADPE
 Landing all Satellite Airports:
 Expect RADAR vectors prior to DADPE.

- NOTE: RADAR required.
- NOTE: RNAV 1.
- NOTE: DME/DME/IRU or GPS required.
- NOTE: Turbojet and Turboprop aircraft only.
- NOTE: Primary landing Rws 1L/R, 19L/R.
- NOTE: For non-GPS equipped aircraft LAL, PIE, and OCF must be operational.

WOBKI
 KTPA Landing North:
 Expect RADAR vectors
 prior to WOBKI.

NOTE: Chart not to scale.

SE-3, 25 MAR 2021 to 22 APR 2021

SE-3, 25 MAR 2021 to 22 APR 2021

FOOXX FIVE ARRIVAL (RNAV)

(TABIR.FOOXX5) 13SEP18

TAMPA, FLORIDA