

LOC/DME I-AMP <b>108.9</b> Chan <b>26</b>	APP CRS <b>007°</b>	Rwy Idg <b>10800</b> TDZE <b>11</b> Apt Elev <b>26</b>
---	------------------------	--

# ILS RWY 1L (SA CAT I)

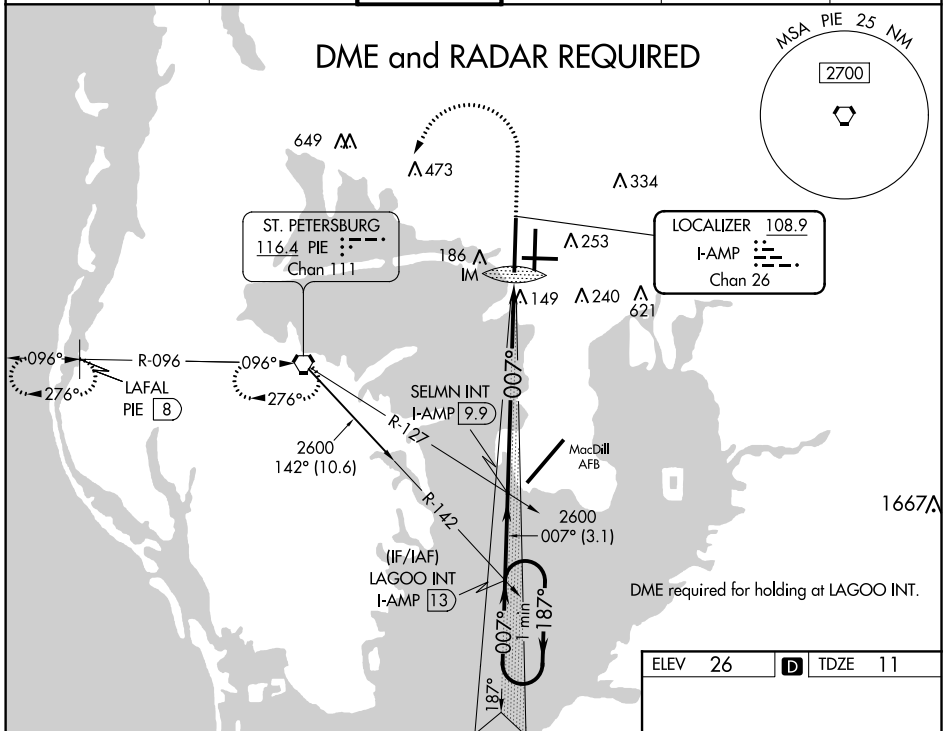
TAMPA INTL (TPA)

**⚠** Simultaneous approach authorized. Requires specific OPSPEC, MSPEC, or LOA approval and use of HUD to DH.

**ALSIF-2**

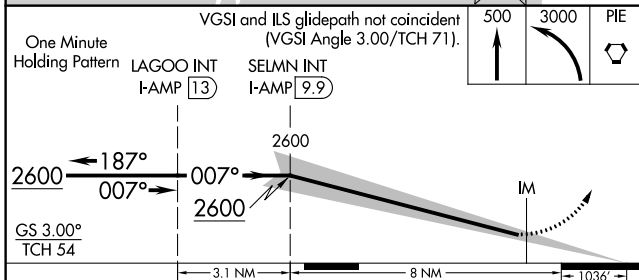
**MISSED APPROACH:** Climb to 500 then climbing left turn to 3000 direct PIE VORTAC and hold, continue climb-in-hold to 3000 (TACAN aircraft climb to 500 then climbing left turn to 4000 direct PIE VORTAC then on PIE VORTAC R-276 to LAFAL/PIE 8 DME and hold W, RT, 096 inbound)

ARR <b>126.45</b>	D-ATIS <b>128.475</b>	DEP <b>128.475</b>	TAMPA APP CON <b>118.5 307.175</b>	TAMPA TOWER <b>119.5 269.4</b>	GND CON <b>121.7 269.4</b>	CLNC DEL <b>133.6</b>	CPDLC
----------------------	--------------------------	-----------------------	---------------------------------------	-----------------------------------	-------------------------------	--------------------------	-------

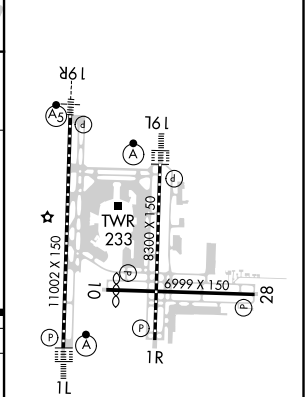


SE-3, 25 MAR 2021 to 22 APR 2021

SE-3, 25 MAR 2021 to 22 APR 2021



ELEV 26	<b>D</b> TDZE 11
---------	------------------



CATEGORY	A	B	C	D
S-ILS 1L	RA 155/14 150 DA 161			

## SA CATEGORY I ILS - SPECIAL AIRCREW & AIRCRAFT CERTIFICATION REQUIRED

REIL Rwy 1R  
TDZ/CL Rwys 1L and 19L  
HIRL Rwys 1L-19R, 1R-19L, and 10-28