

WAAS CH 50406 W01A	APP CRS 007°	Rwy Idg 10800 TDZE 11 Apt Elev 26
---------------------------------	------------------------	--

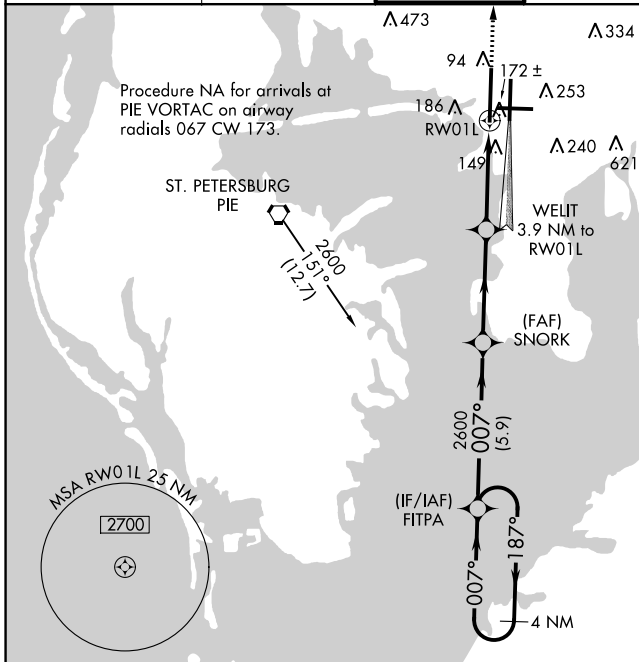
RNAV (GPS) RWY 1L

TAMPA INTL (TPA)

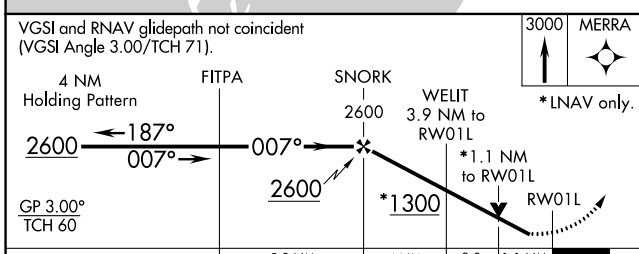
⚠ For uncompensated Baro-VNAV systems, LNAV/VNAV NA below -15°C (5°F) or above 43°C (109°F). DME/DME RNP-0.3 NA. For inop ALSF, increase LPV Cat E visibility to RVR 4000, LNAV/VNAV Cat E visibility to 1 3/8 mile, and LNAV Cat E visibility to RVR 6000. Simultaneous approach authorized with Rwy 1R. LNAV procedure NA during simultaneous operations. Use of FD or AP providing RNAV track guidance required during simultaneous operations.

ALSF-2
 MISSED APPROACH:
 Climb to 3000 direct
 MERRA and hold.

ARR 126.45	D-ATIS 128.475	DEP 118.5 307.175	TAMPA APP CON 119.5 269.4	TAMPA TOWER 121.7 269.4	GND CON 133.6	CLNC DEL	CPDLC
-------------------	-----------------------	--------------------------	----------------------------------	--------------------------------	----------------------	----------	-------



MISSED APCH FIX
 4 NM
 MERRA
 A 630
 1667 A



ELEV 26	D TDZE 11
----------------	-------------------------

REIL Rwy 1R
 TDZ/CL Rws 1L and 19L
 HIRL Rws 1L-19R, 1R-19L, and 10-28

CATEGORY	A	B	C	D	E
LPV DA	211/18		200 (200-1/2)		
LNAV/VNAV DA	431/45		420 (500-7/8)		
LNAV MDA	440/24	429 (500-1/2)		440/40	429 (500-3/4)
C CIRCLING	560-1	534 (600-1)		680-1 3/4 654 (700-13/4)	980-3 954 (1000-3)

SE-3, 25 MAR 2021 to 22 APR 2021

SE-3, 25 MAR 2021 to 22 APR 2021