

WAAS CH 70520 W28A	APP CRS 277°	Rwy Idg TDZE Apt Elev	6501 26 26
--	------------------------	-----------------------------	---------------------------------------

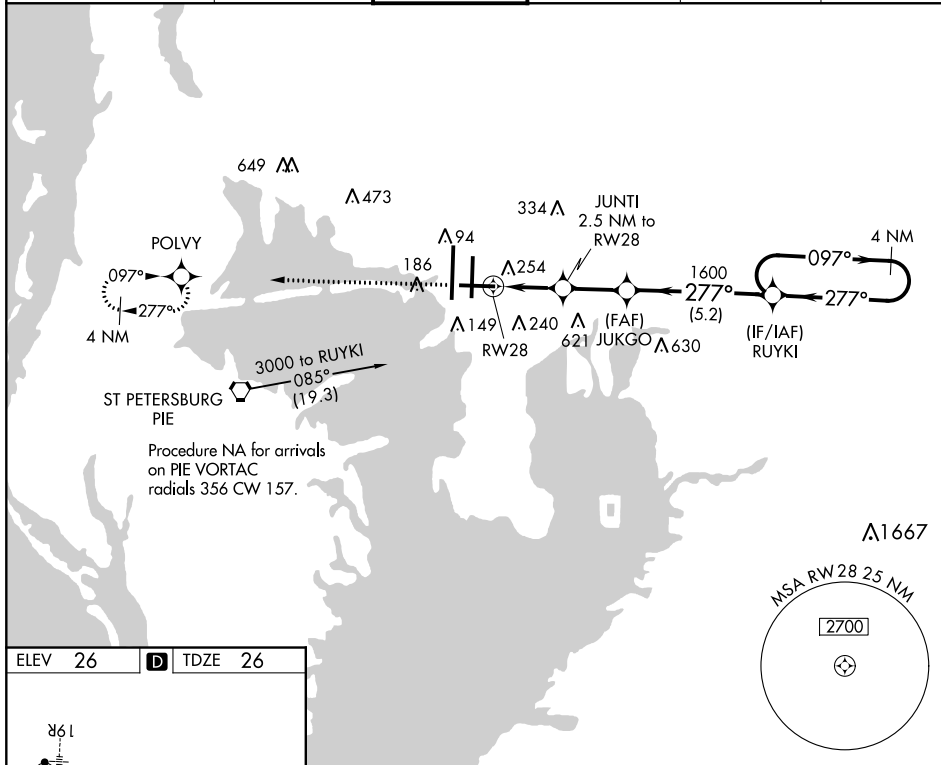
RNAV (GPS) RWY 28

TAMPA INTL (TPA)

⚠ For uncompensated Baro-VNAV systems, LNAV/VNAV NA below -15°C (5°F) or above 43°C (109°F).
DME/DME RNP-0.3 NA. Helicopter visibility reduction below 3/4 SM NA.

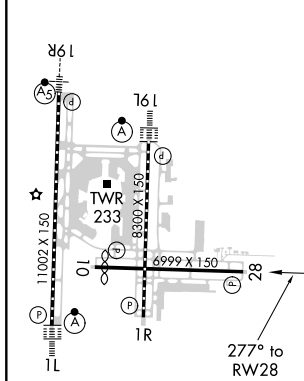
MISSED APPROACH: Climb to 2000 direct POLVY and hold.

ARR 126.45	D-ATIS DEP 128.475	TAMPA APP CON 118.5 307.175	TAMPA TOWER 119.5 269.4	GND CON 121.7 269.4	CLNC DEL 133.6	CPDLC
----------------------	---------------------------------	---------------------------------------	-----------------------------------	-------------------------------	--------------------------	-------

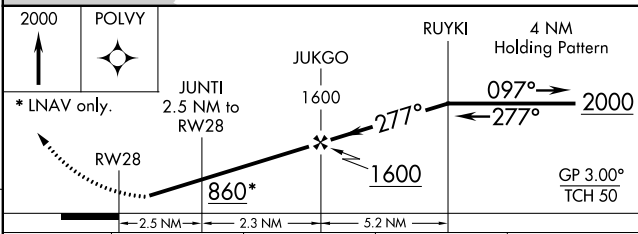


Procedure NA for arrivals on PIE VORTAC radials 356 CW 157.

ELEV 26	D	TDZE 26
---------	----------	---------



REIL Rwy 1R
TDZ/CL Rwy 1L and 19L
HIRL Rwy 1L-19R, 1R-19L, and 10-28



CATEGORY	A	B	C	D
LPV DA		389-1 ¹ / ₈	363 (400-1 ¹ / ₈)	
LNAV/VNAV DA		468-1 ¹ / ₂	442 (500-1 ¹ / ₂)	
LNAV MDA	520-1	494 (500-1)	520-1 ³ / ₈	494 (500-1 ³ / ₈)
C CIRCLING	560-1	534 (600-1)	680-1 ³ / ₄ 654 (700-1 ³ / ₄)	980-3 954 (1000-3)

SE-3, 25 MAR 2021 to 22 APR 2021

SE-3, 25 MAR 2021 to 22 APR 2021