


# RNAV (RNP) Y RWY 19L

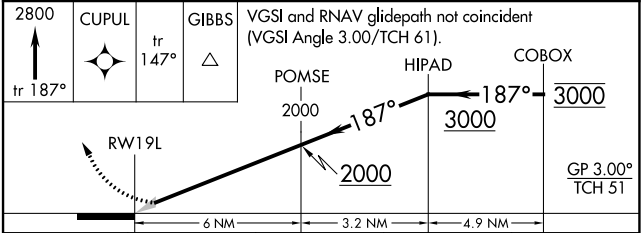
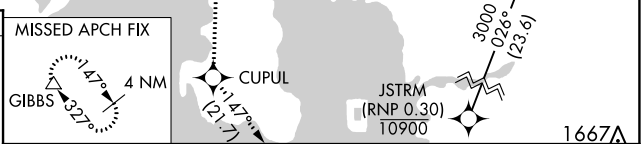
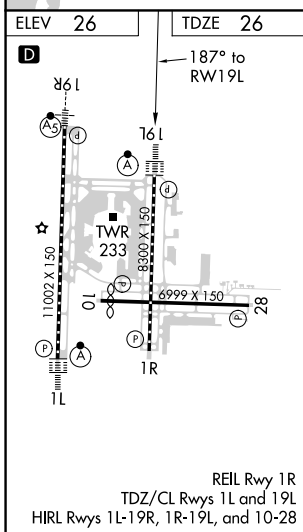
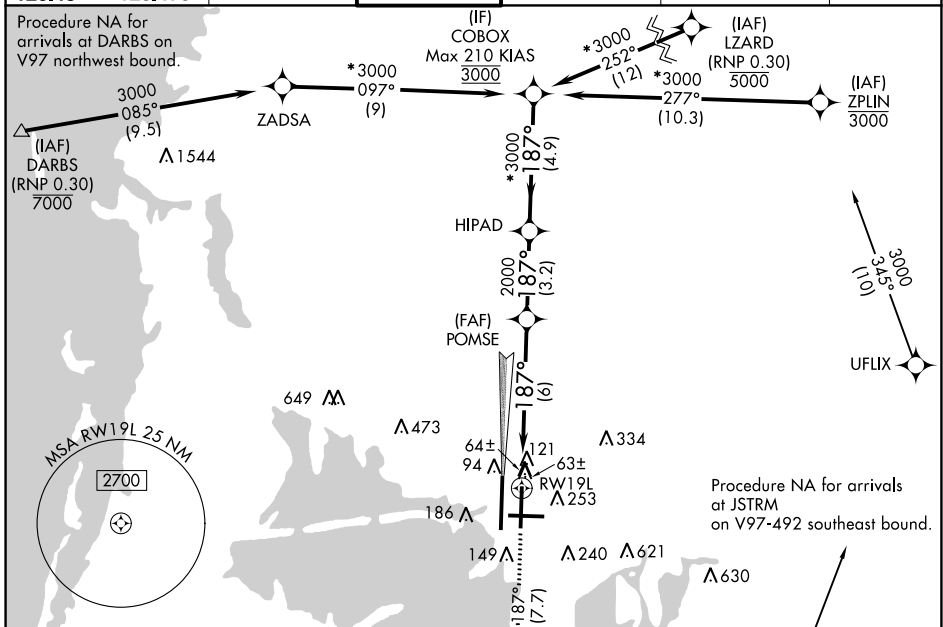
TAMPA INTL (TPA)

APP CRS	Rwy Idg	<b>8300</b>
<b>187°</b>	TDZE	<b>26</b>
	Apt Elev	<b>26</b>

▼ For uncompensated Baro-VNAV systems, procedure NA below 1°C (34°F) or above 49°C (120°F). GPS required. For inop ALSF, increase RNP 0.11 all Cats visibility to 1, RNP 0.23 all Cats visibility to 1½ and RNP 0.30 all Cats visibility to 1¾. Simultaneous approach authorized with Rwy 19R. Use of FD or AP providing RNAV track guidance required during simultaneous operations.

ALSF-2  
  
 MISSED APPROACH: Climb to 2800 on track 187° to CUPUL and on track 147° to GIBBS and hold.

ARR	D-ATIS	DEP	TAMPA APP CON	TAMPA TOWER	GND CON	CLNC DEL	CPDLC
<b>126.45</b>		<b>128.475</b>	<b>118.5 307.175</b>	<b>119.5 269.4</b>	<b>121.7 269.4</b>	<b>133.6</b>	



CATEGORY	A	B	C	D
RNP 0.11 DA		329/24	303 (400-½)	
RNP 0.23 DA		368/32	342 (400-¾)	
RNP 0.30 DA		442/45	416 (500-¾)	

**AUTHORIZATION REQUIRED**

SE-3, 25 MAR 2021 to 22 APR 2021

SE-3, 25 MAR 2021 to 22 APR 2021