

DOCTR FIVE DEPARTURE (RNAV)

AL-443 (FAA)

WASHINGTON, DC

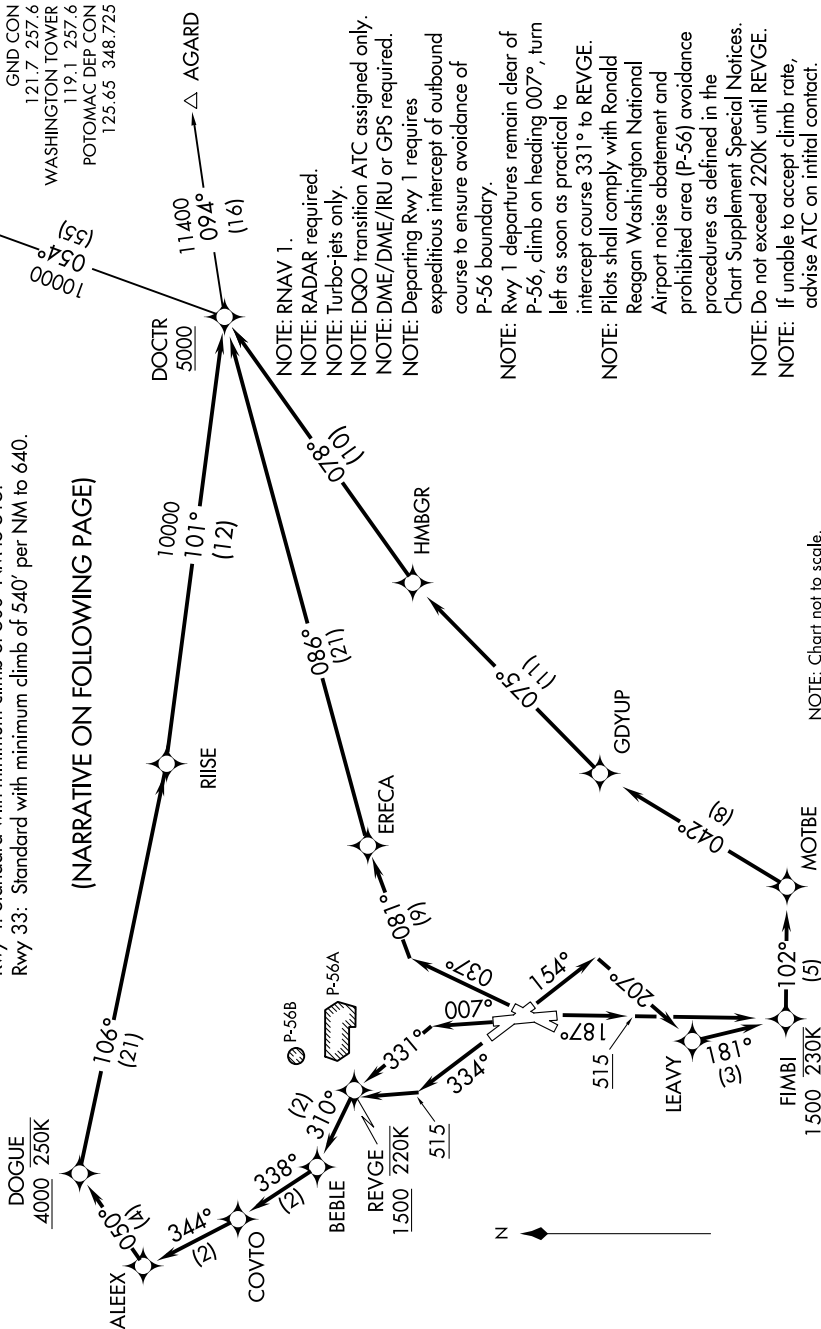
NE-3, 25 MAR 2021 to 22 APR 2021

TAKEOFF MINIMUMS:

- Rwy 1: Standard with minimum climb of 825' per NM to 600.
- Rwys 15, 19: Standard with minimum climb of 500' per NM to 515.
- Rwy 4: Standard with minimum climb of 500' NM to 515.
- Rwy 33: Standard with minimum climb of 540' per NM to 640.

TOP ALTITUDE:
5000

(NARRATIVE ON FOLLOWING PAGE)



NOTE: RNAV 1.

NOTE: RADAR required.

NOTE: Turbo-jets only.

NOTE: DQO transition ATC assigned only.

NOTE: DME/DME/IRU or GPS required.

NOTE: Departing Rwy 1 requires expeditious intercept of outbound course to ensure avoidance of P-56 boundary.

NOTE: Rwy 1 departures remain clear of P-56, climb on heading 007°, turn left as soon as practical to intercept course 331° to REVGE.

NOTE: Pilots shall comply with Ronald Reagan Washington National Airport noise abatement and prohibited area (P-56) avoidance procedures as defined in the Chart Supplement Special Notices.

NOTE: Do not exceed 220K until REVGE.

NOTE: If unable to accept climb rate, advise ATC on initial contact.

NOTE: Chart not to scale.

DOCTR FIVE DEPARTURE (RNAV)

NE-3, 25 MAR 2021 to 22 APR 2021