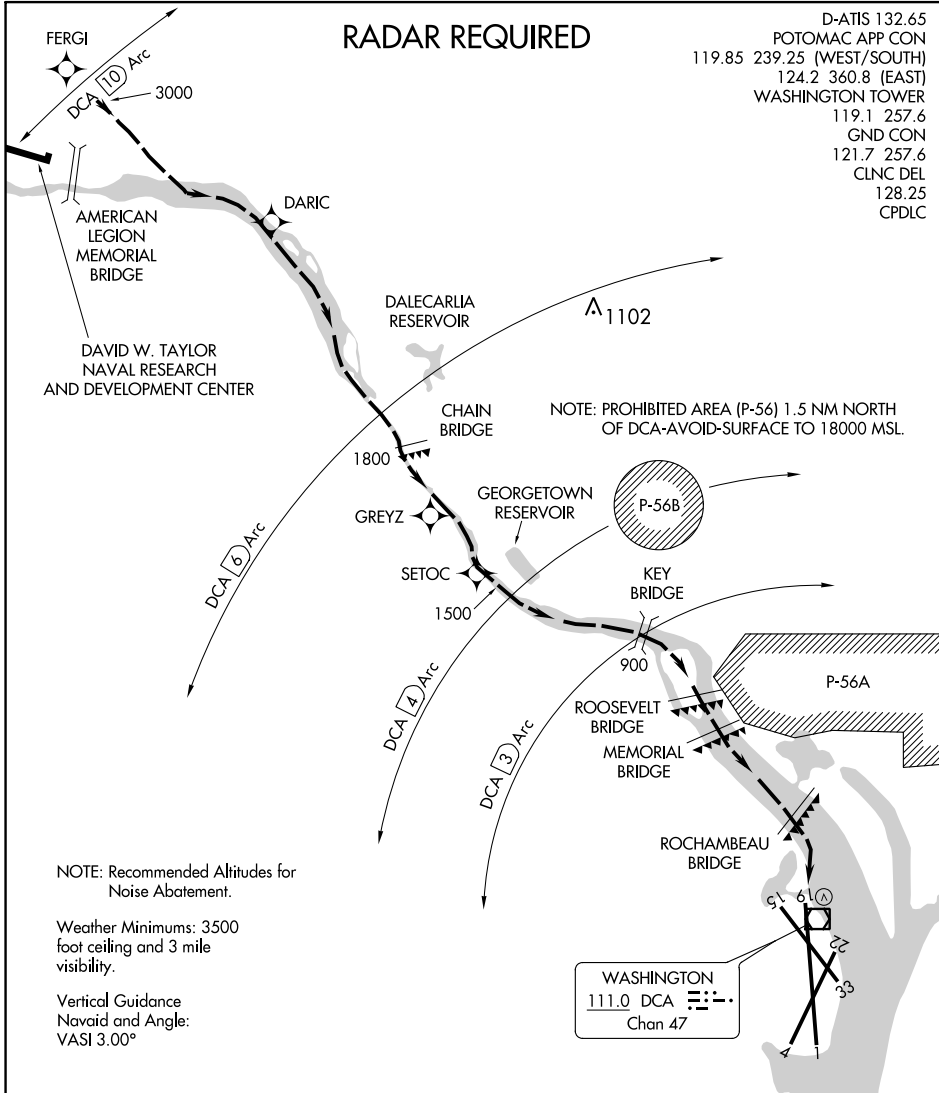


# RIVER VISUAL RWY 19

RONALD REAGAN WASHINGTON NATIONAL (DCA)  
AL-443 (FAA) WASHINGTON, DC

## RADAR REQUIRED

D-ATIS 132.65  
 POTOMAC APP CON  
 119.85 239.25 (WEST/SOUTH)  
 124.2 360.8 (EAST)  
 WASHINGTON TOWER  
 119.1 257.6  
 GND CON  
 121.7 257.6  
 CLNC DEL  
 128.25  
 CPDLC



NOTE: Recommended Altitudes for Noise Abatement.

Weather Minimums: 3500 foot ceiling and 3 mile visibility.

Vertical Guidance  
Navaid and Angle:  
VASI 3.00°

NOTE: PROHIBITED AREA (P-56) 1.5 NM NORTH OF DCA-AVOID-SURFACE TO 18000 MSL.

WASHINGTON  
 111.0 DCA  
 Chan 47

NE-3, 25 MAR 2021 to 22 APR 2021

NE-3, 25 MAR 2021 to 22 APR 2021

1 NM	2	3	4	5	6	7	8
------	---	---	---	---	---	---	---

### RIVER VISUAL RWY 19

Aircraft may visually follow the river to the airport, or may proceed via the RNAV (RNP) RWY 19 Approach to SETOC waypoint, then follow the river to the airport.

NOTE: Clearance for visual approach does not authorize penetration of P-56.

# RIVER VISUAL RWY 19

Amdt 5 10DEC15

38°51'N-77°02'W

WASHINGTON, DC

RONALD REAGAN WASHINGTON NATIONAL (DCA)