

APP CRS	Rwy Idg	6869
007°	TDZE	14
	Apt Elev	14

RNAV (RNP) RWY 1

RONALD REAGAN WASHINGTON NATIONAL (DCA)

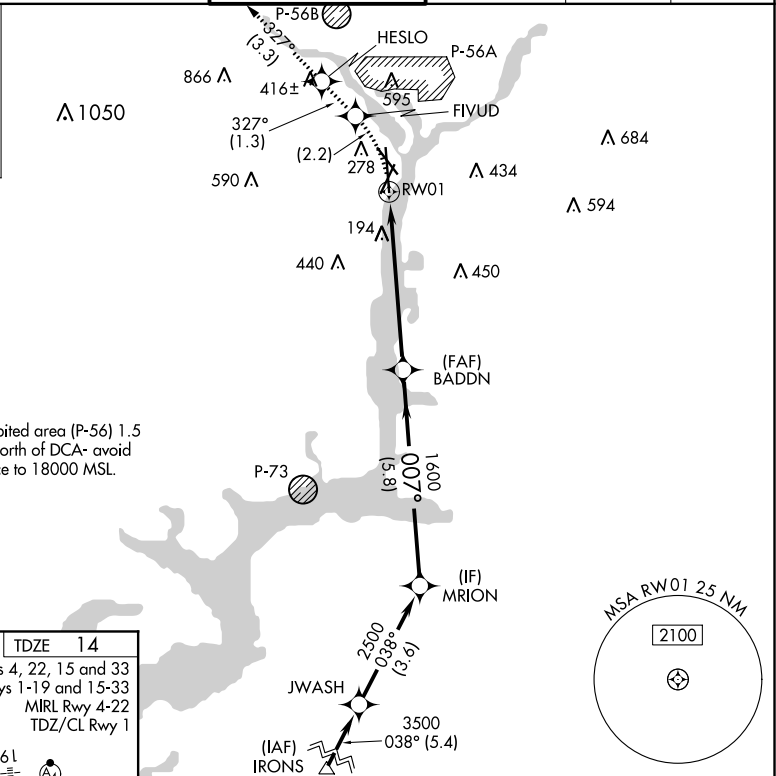
For uncompensated Baro-VNAV systems, procedure NA below -10°C (14°F) or above 48°C (120°F). RF required. GPS required. Missed approach requires RNP less than 1.0. For inop ALS, increase RNP 0.30 all Cats visibility to 1¼ mile.	ALSF-2 	MISSED APPROACH: (Do not exceed 185K until FIVUD) Climb to 2200 left turn to FIVUD and on track 327° to HESLO and on track 327° to GTN NDB and hold.

D-ATIS	POTOMAC APP CON	WASHINGTON TOWER	GND CON	CLNC DEL	CPDLC
132.65	119.85 239.25 (WEST/SOUTH) 124.2 360.8 (EAST)	119.1 257.6	121.7 257.6	128.25	

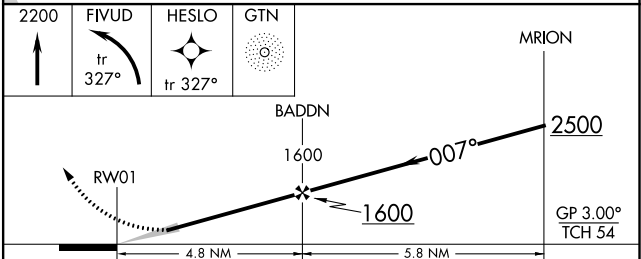
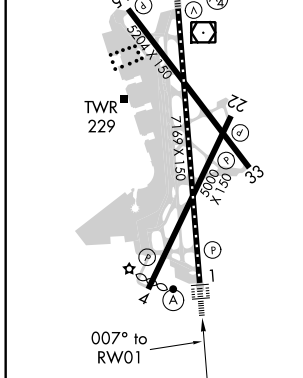
MISSED APCH FIX

4 NM

GEORGETOWN GTN



ELEV 14	D	TDZE 14
REIL Rwy 4, 22, 15 and 33 HIRL Rwy 1-19 and 15-33 MRL Rwy 4-22 TDZ/CL Rwy 1		



CATEGORY	A	B	C	D
RNP 0.30 DA	552/60		538 (600-1¼)	

AUTHORIZATION REQUIRED

NE-3, 25 MAR 2021 to 22 APR 2021

NE-3, 25 MAR 2021 to 22 APR 2021