

APP CRS Rwy Idg **9817**  
**272°** TDZE **469**  
 APP Elev **491**

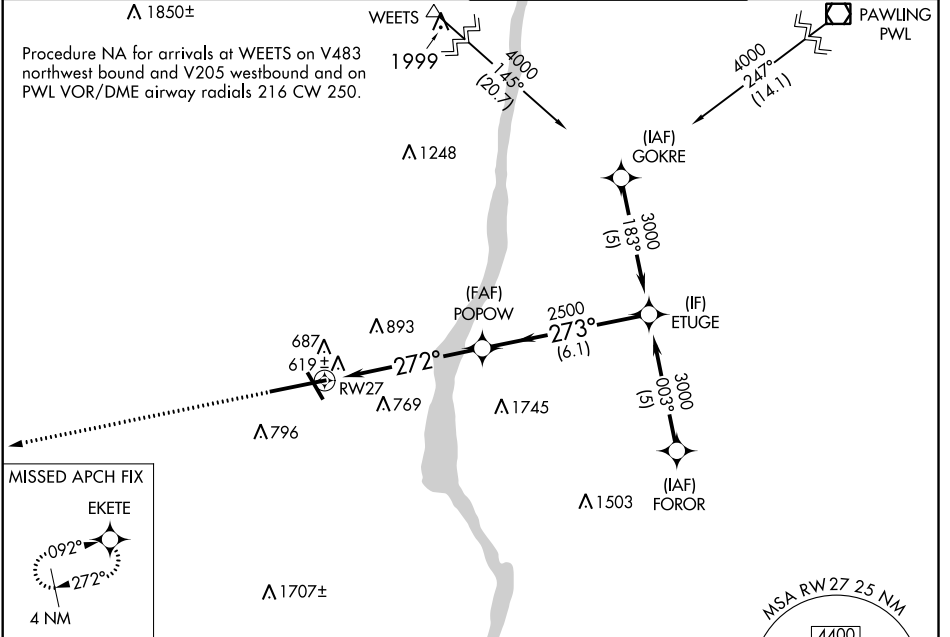
# RNAV (GPS) RWY 27

NEW YORK STEWART INTL (SWF)

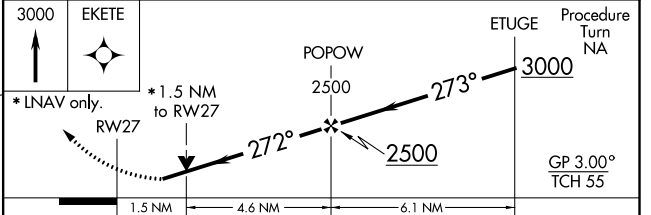
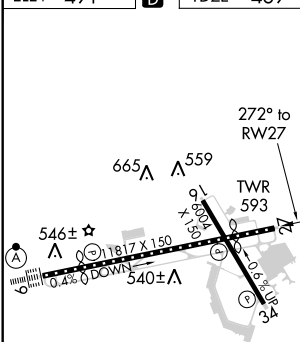
RNP APCH. MISSED APPROACH: Climb to 3000 direct EKETE and hold.

For uncompensated Baro-VNAV systems, LNAV/VNAV NA below -15°C or above 54°C.

ATIS <b>124.575</b>	NEW YORK APP CON <b>132.75 363.1</b>	STEWART TOWER <b>121.0 254.4</b>	GND CON <b>121.9</b>
------------------------	---	-------------------------------------	-------------------------



ELEV **491** D TDZE **469**



CATEGORY	A	B	C	D
LNAV/DA/VNAV	1048-2 579 (600-2)			
LNAV MDA	1000-1 531 (600-1)	1000-1½ 531 (600-1½)	1000-1¾ 531 (600-1¾)	1000-1¾ 531 (600-1¾)
<span style="border: 1px solid black; padding: 2px;">C</span> CIRCLING	1200-1 709 (800-1)	1200-2 709 (800-2)	1200-2½ 709 (800-2½)	1200-2½ 709 (800-2½)

TDZ/CL Rwy 9  
 HIRL Rwy 9-27 and 16-34  
 REIL Rwy 16, 27 and 34

NE-2, 25 MAR 2021 to 22 APR 2021

NE-2, 25 MAR 2021 to 22 APR 2021