

# ILS or LOC RWY 19R

LOC I-CWX <b>109.9</b>	APCH CRS <b>188°</b>	Rwy ldg 19R <b>12,000</b> 19L <b>12,007</b> TDZE 19R <b>1372</b> 19L <b>1365</b> Arprt Elev <b>1372</b>
---------------------------	-------------------------	---

AL-453 [USAF]

MC CONNELL AFB (KIAB)

RADAR or DME Required.

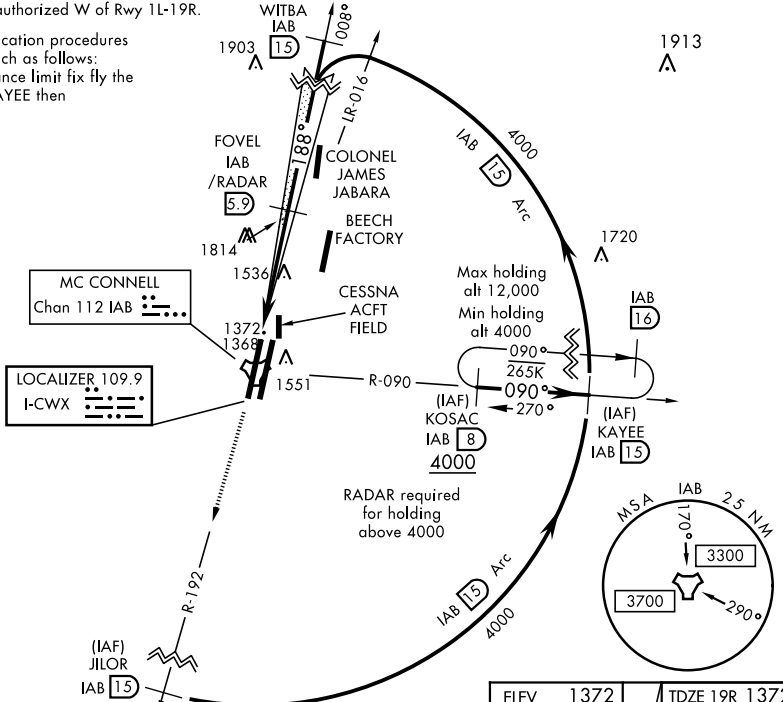


MISSED APPROACH: Climb to 4000 via IAB TACAN R-192 to 15 DME (JILOR). Expect further clearance from ATC.

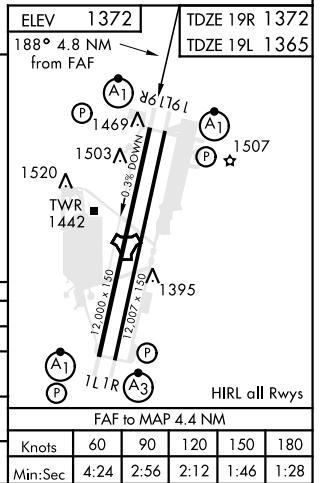
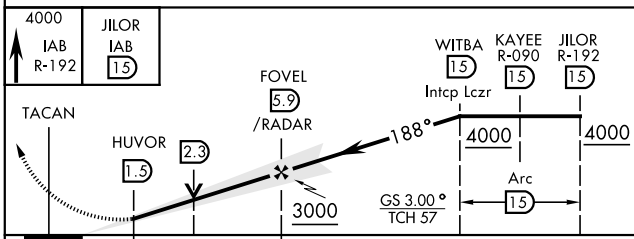
D-ATIS <b>124.65 269.9</b>	WICHITA APP CON <b>134.8 269.1</b>	MC CONNELL TOWER <b>127.25 291.775</b>	GND CON <b>118.0 275.8</b>
-------------------------------	---------------------------------------	---	-------------------------------

\*\*\* Circling not authorized W of Rwy 1L-19R.

ATC lost communication procedures on missed approach as follows:  
At 15 DME clearance limit fix fly the 15 DME arc to KAYEE then KOSAC and hold.



EMERG SAFE ALT 100 NM 4200



CATEGORY	A	B	C	D	E
S-ILS 19R *	1572/24		200	(200-1/2)	
S-LOC 19R **	1820/24	448 (500-1/2)	1820/45	448	(500-3/8)
SIDESTEP RWY 19L	1820/55	455 (500-1)	1820-1 3/8	455	(500-1 3/8)
*** CIRCLING	1900-1	528 (600-1)	1900-1 1/2 528 (600-1 1/2)	2400-3	1028 (1100-3)

WICHITA, KANSAS  
Amdt 5 10SEP20

37°37'N-97°16'W

MC CONNELL AFB (KIAB)

# ILS or LOC RWY 19R

NC-2, 25 MAR 2021 to 22 APR 2021

NC-2, 25 MAR 2021 to 22 APR 2021