

WICHITA, KANSAS

# ILS or LOC RWY 1L

LOC I-IAB <b>111.1</b>	APCH CRS <b>008°</b>	Rwy Idg TDZE Arprt Elev	1L <b>12,000</b> <b>1347</b> <b>1372</b>	1R <b>12,007</b> <b>1347</b> <b>1347</b>
---------------------------	-------------------------	-------------------------------	---	---

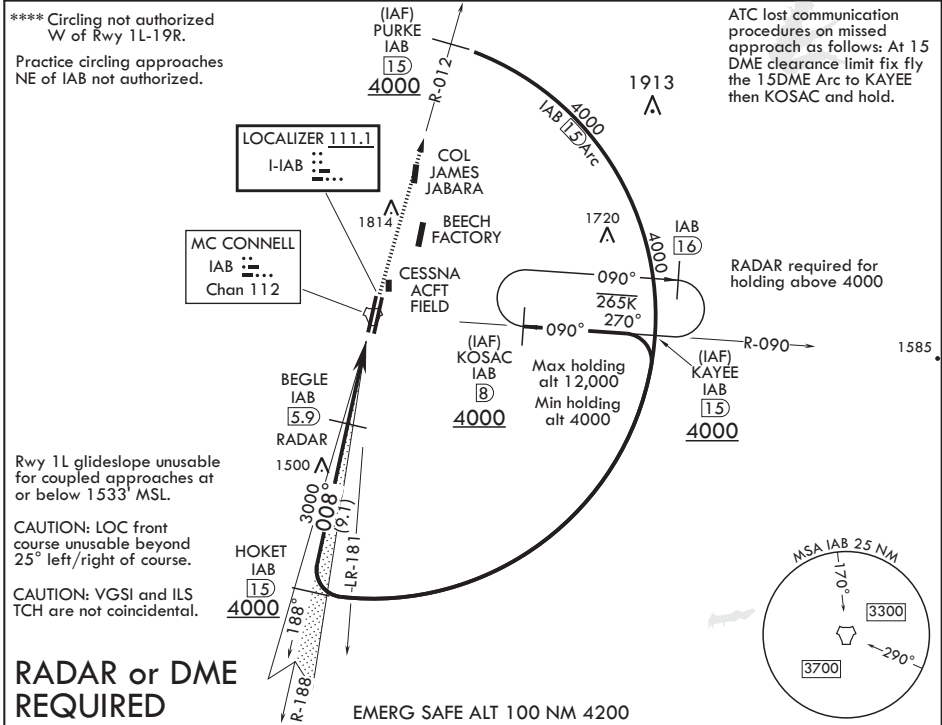
AL-453 (USAF)

MC CONNELL AFB (KIAB)

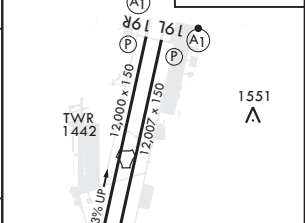
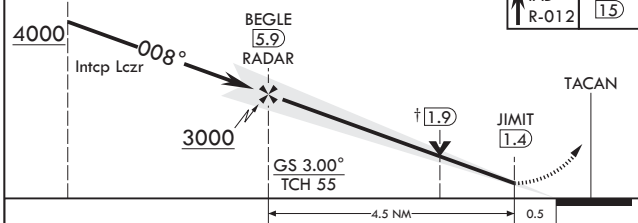
**▽** \* When ALS inop, increase RVR to 40 and vis to 3/4 mile.  
 \*\* When ALS inop, increase RVR to 55 and vis to 1 mile.  
 \*\*\* When ALS inop, increase CAT AB RVR to 55 and vis to 1 mile, CAT CDE RVR to 60 and vis to 1 1/8.

Rwy 1L ALSF-1 (A1) Rwy 1R SSALR (A3)  
 MISSED APPROACH: Climb to 4000 via IAB TACAN R-012 to 15 DME (PURKE). Expect further clearance from ATC.

D ATIS <b>124.65 269.9</b>	WICHITA APP CON <b>134.8 269.1</b>	TOWER <b>127.25 291.775</b>	GND CON <b>118.0 275.8</b>
-------------------------------	---------------------------------------	--------------------------------	-------------------------------



HOKET IAB (15) 4000	BEGLE IAB (5.9) RADAR 3000	JIMIT IAB (1.4) 4000	PURKE IAB (15) 4000	ELEV 1372	TDZE 1L 1347	TDZE 1R 1347
---------------------	----------------------------	----------------------	---------------------	-----------	--------------	--------------



CATEGORY	A	B	C	D	E
S-ILS 1L*		1547/24	200	(200-1/2)	
S-LOC 1L**		1700/24 353 (400-1/2)	1700/35 353 (400-3/4)		
SIDESTEP 1R***		1720/40	373	(400-3/4)	
<b>C</b> CIRCLING****	1900-1 528 (600-1)	1900-1 1/2 528 (600-1 1/2)	2400-3 1028 (1100-3)		

FAF to MAP 4.5 NM					
Knots	60	90	120	150	180
Min:Sec	4:30	3:00	2:15	1:48	1:30

WICHITA, KANSAS  
 Amdt 5 10SEP20

37°37'N - 97°16'W

MC CONNELL AFB (KIAB)

# ILS or LOC RWY 1L

NC-2, 25 MAR 2021 to 22 APR 2021

NC-2, 25 MAR 2021 to 22 APR 2021