

WICHITA, KANSAS

RNAV (GPS) RWY 1R

APCH CRS	Rwy Idg	12,007
005°	TDZE	1347
	Arprt Elev	1372

AL-453 (USAF)

MC CONNELL AFB (KIAB)

▼ * When ALS inop, increase CAT AB RVR to 55, vis to 1 mile;
 CAT CDE RVR to 60, vis to 1 1/8 miles,
 ** Circling not authorized west of Rwy 1L-19R.

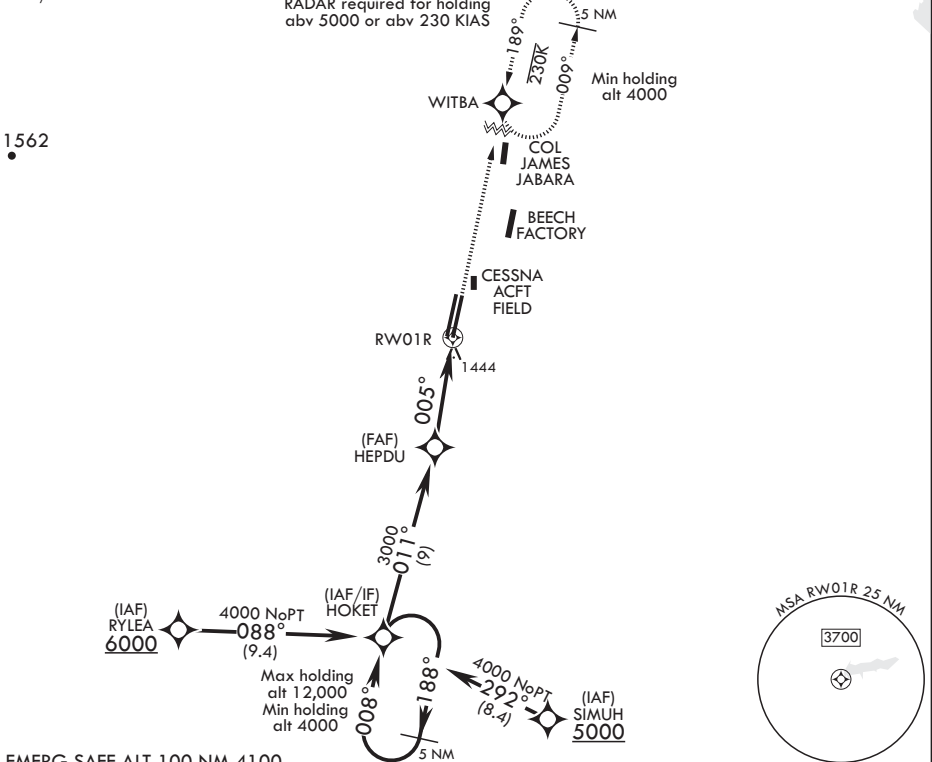


MISSED APPROACH: Climbing right turn to 4000 direct WITBA and hold.

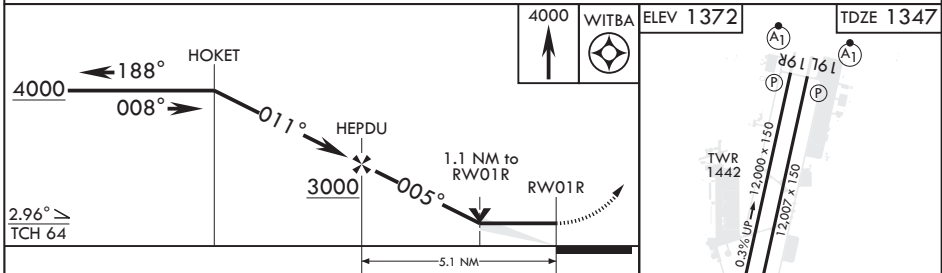
D ATIS 124.65 269.9	WICHITA APP CON 134.8 269.1	TOWER 127.25 291.775	GND CON 118.0 275.8
-------------------------------	---------------------------------------	--------------------------------	-------------------------------

DME/DME RNP -0.3 NA

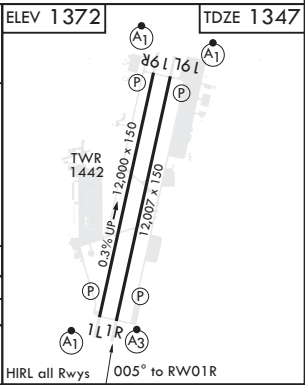
RADAR required for holding
 abv 5000 or abv 230 KIAS



EMERG SAFE ALT 100 NM 4100



CATEGORY	A	B	C	D	E
LNVA MDA*	1740/40		393	(400-3/4)	
C CIRCLING**	1900-1 528 (600-1)	1900-1 1/2 528 (600-1 1/2)	2400-3 1028 (1100-3)		



WICHITA, KANSAS
 Amdt 4 10SEP20

37°37'N - 97°16'W

MC CONNELL AFB (KIAB)

RNAV (GPS) RWY 1R

NC-2, 25 MAR 2021 to 22 APR 2021

NC-2, 25 MAR 2021 to 22 APR 2021