


# TACAN RWY 19L

TACAN IAB Chan <b>112</b>	APCH CRS <b>192°</b>	Rwy ldg <b>12,007</b> TDZE <b>1365</b> Arprt Elev <b>1372</b>
------------------------------	-------------------------	---

AL-453 [USAF]

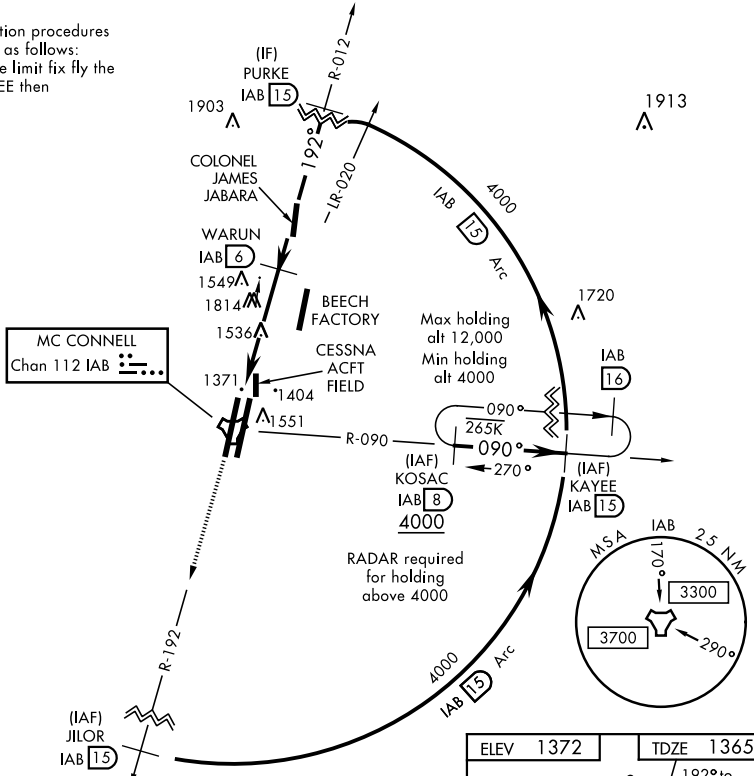
MC CONNELL AFB (KIAB)

▼ \* When ALS inop, increase CAT AB RVR to 55 and vis to 1 mile, CAT CDE vis to 1 3/8 miles.  
 \*\* Circling not authorized W of Rwy 1L-19R.

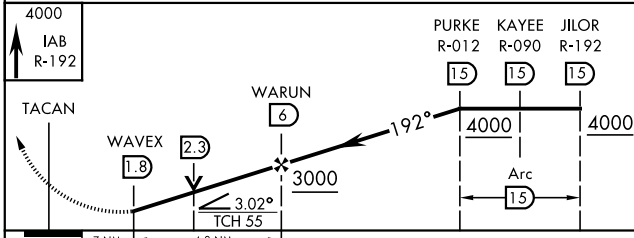
ALSF-1  MISSED APPROACH: Climb to 4000 via IAB TACAN R-192 to JILOR. Expect further clearance from ATC.

D-ATIS <b>124.65 269.9</b>	WICHITA APP CON <b>134.8 269.1</b>	MC CONNELL TOWER <b>127.25 291.775</b>	GND CON <b>118.0 275.8</b>
-------------------------------	---------------------------------------	---	-------------------------------

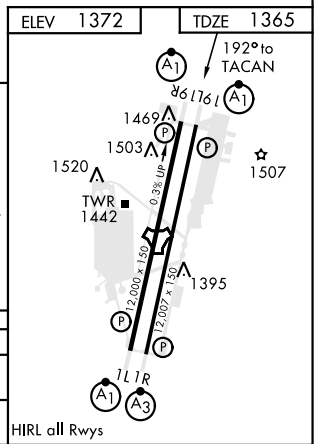
ATC lost communication procedures on missed approach as follows:  
 At 15 DME clearance limit fix fly the 15 DME Arc to KAYEE then KOSAC and hold.



EMERG SAFE ALT 100 NM 4200



CATEGORY	A	B	C	D	E
S-19L *	1820/40	455 (500-3/4)	1820/45	455 (500-7/8)	
CIRCLING **	1900-1	528 (600-1)	1900-1 1/2 528 (600-1 1/2)	2400-3	1028 (1100-3)



# TACAN RWY 19L

NC-2, 25 MAR 2021 to 22 APR 2021

NC-2, 25 MAR 2021 to 22 APR 2021