

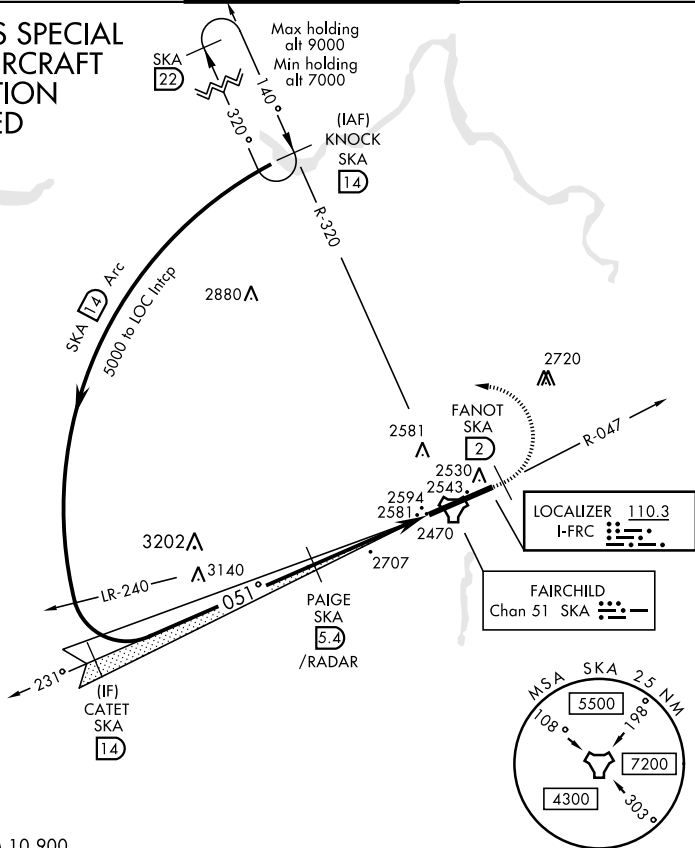
SPOKANE, WASHINGTON

# ILS RWY 5 (CAT II)

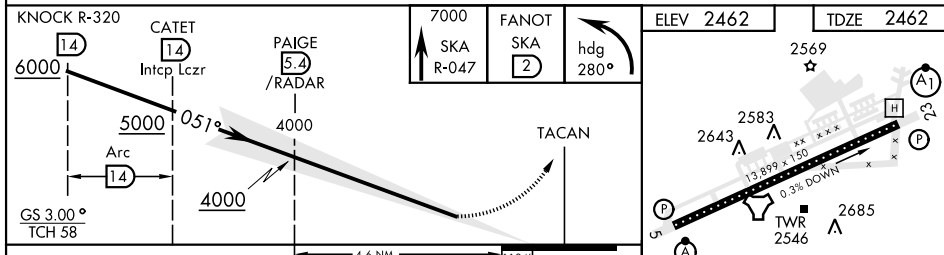
LOC I-FRC <b>110.3</b>	APCH CRS <b>051°</b>	Rwy Idg <b>13,899</b> TDZE <b>2462</b> Arpt Elev <b>2462</b>	AL-553 [USAF]	FAIRCHILD AFB (KSKA)
<b>ALSF-2</b> 			<b>MISSED APPROACH:</b> Climb to 7000 via SKA TACAN R-047. At SKA 2 DME turn left hdg 280° to intcp SKA R-320 to KNOCK and hold, continue climb in hold to 7000.	

ATIS <b>257.625</b>	SPOKANE APP CON 029°-207° <b>133.35 263.0</b> 208°-028° <b>123.75 282.25</b>	FAIRCHILD TOWER <b>120.35 233.7</b>	GND CON <b>123.6 275.8</b>
------------------------	--	--	-------------------------------

## CATEGORY II ILS SPECIAL AIRCREW & AIRCRAFT CERTIFICATION REQUIRED



EMERG SAFE ALT 100 NM 10,900



CATEGORY	A	B	C	D	E
S-ILS 5	RA 107/12		108	DA 2570	

SPOKANE, WASHINGTON 47°37'N-117°39'W FAIRCHILD AFB (KSKA)

Amtd 1 24MAY18

# ILS RWY 5 (CAT II)

NW-1, 25 MAR 2021 to 22 APR 2021

NW-1, 25 MAR 2021 to 22 APR 2021