

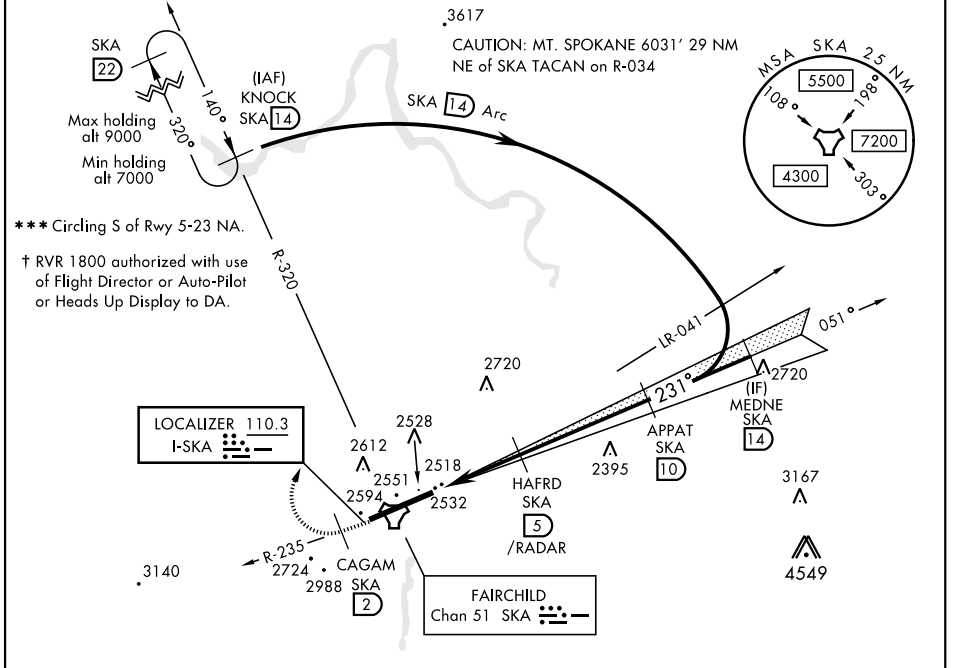
SPOKANE, WASHINGTON

ILS or LOC RWY 23

LOC I-SKA 110.3	APCH CRS 231°	Rwy Idg 13,899 TDZE 2423 Arpt Elev 2462	AL-553 [USAF]	FAIRCHILD AFB (KSKA)
---------------------------	-------------------------	--	---------------	----------------------

▼ * When ALS inop, increase RVR to 40 and vis to ¼ mile.
 ** When ALS inop, increase CAT ABCDE RVR to 55 and vis to 1 mile.
 ALSF-1 MISSED APPROACH: Climb to 7000 via SKA R-235. At SKA 2 DME, turn right heading 340° to intcp SKA R-320 to KNOCK and hold, continue climb in hold to 7000.

ATIS 257.625	SPOKANE APP CON 029°-207° 133.35 263.0 208°-028° 123.75 282.25	FAIRCHILD TOWER 120.35 233.7	GND CON 123.6 275.8
------------------------	--	--	-------------------------------

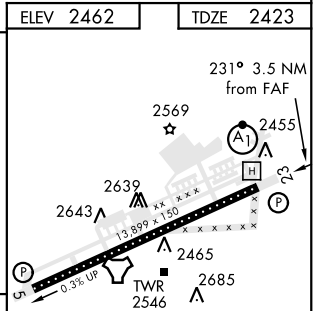
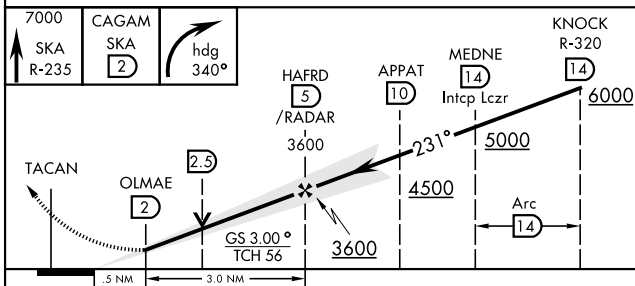


NW-1, 25 MAR 2021 to 22 APR 2021

NW-1, 25 MAR 2021 to 22 APR 2021

RADAR or DME REQUIRED

EMERG SAFE ALT 100 NM 10,900



CATEGORY	A	B	C	D	E
S-ILS 23 * †	2623/24		200	(200-1/2)	
S-LOC 23 **	2800/24	377 (400-1/2)	2800/35	377 (400-5/8)	
CIRCLING ***	2900-1	2920-1	3040-1 1/2	3040-2	3500-3
	438 (500-1)	458 (500-1)	578 (600-1 1/2)	578 (600-2)	1038 (1100-3)

ELEV 2462	TDZE 2423				
FAF to MAP 3.0 NM					
Knots	60	90	120	150	180
Min:Sec	3:00	2:00	1:30	1:12	1:00

SPOKANE, WASHINGTON

47°37'N-117°39'W

FAIRCHILD AFB (KSKA)

Amdt 3 24MAY18

ILS or LOC RWY 23