

SPOKANE, WASHINGTON

# RNAV (GPS) RWY 23

APCH CRS	Rwy Idg	<b>13,899</b>
<b>231°</b>	TDZE	<b>2423</b>
	Arprt Elev	<b>2462</b>

AL-553 (USAF)

FAIRCHILD AFB (KSKA)

**V** \* When ALS inop, increase CAT AB RVR to 55 and vis to 1 mile, CAT CDE vis to 1 1/4 miles.  
 \*\* Circling S of Rwy 5-23 NA.

ALS-F-1



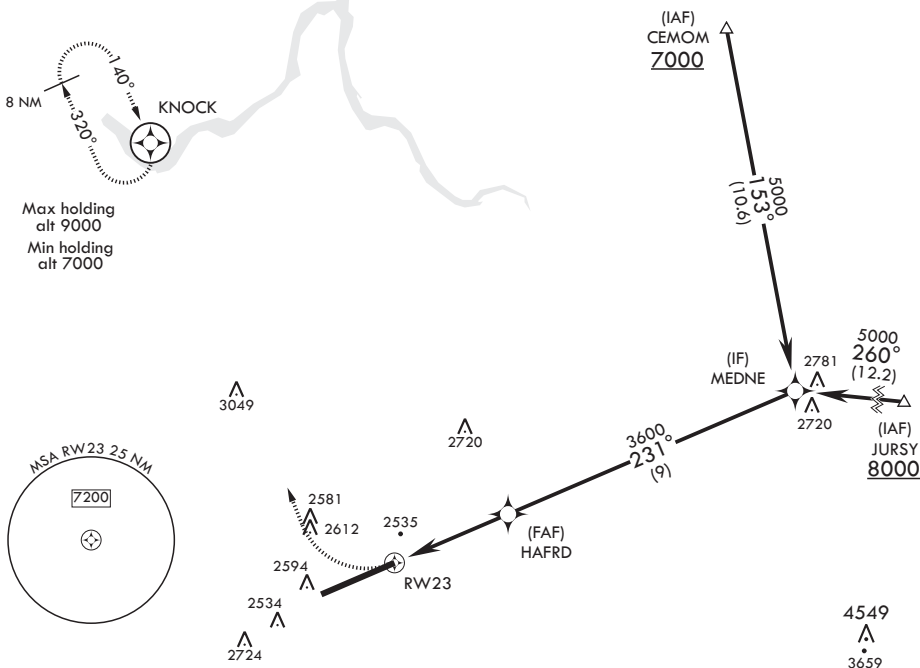
MISSED APPROACH: Climb to 7000 via right turn direct to KNOCK and hold, continue climb in hold to 7000.

ATIS <b>257.625</b>	SPOKANE APP CON <b>123.75 282.25 208°-028°</b> <b>133.35 263.0 029°-207°</b>	TOWER <b>120.35 233.7</b>	GND CON <b>123.6 275.8</b>
------------------------	--	------------------------------	-------------------------------

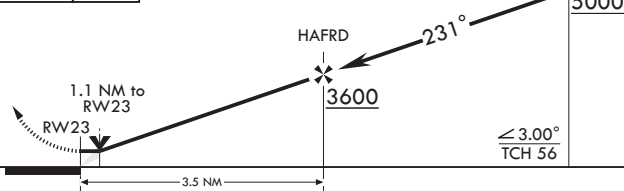
DME/DME RNP-0.3 NA.

3618

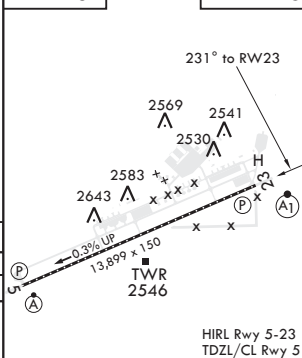
CAUTION: MT. SPOKANE  
6031' 29 NM NE of KSKA.



EMERG SAFE ALT 100 NM 10,900



ELEV 2462 TDZE 2423



CATEGORY	A	B	C	D	E
LNAV MDA*	2820/24 397 (400-1/2)		2820/35 397 (400-5/8)		
<b>C</b> CIRCLING**	2900-1 438 (500-1)	2920-1 458 (500-1)	3040-1 1/2 578 (600-1 1/2)	3040-2 1038 (600-2)	3500-3 1038 (1100-3)

HIRL Rwy 5-23  
TDZL/CL Rwy 5

SPOKANE, WASHINGTON

47°37'N - 117°39'W

FAIRCHILD AFB (KSKA)

Amdt 1 24MAY18

# RNAV (GPS) RWY 23

NW-1, 25 MAR 2021 to 22 APR 2021

NW-1, 25 MAR 2021 to 22 APR 2021