


RNAV (GPS) RWY 5

APCH CRS	Rwy Idg	13,899
051°	TDZE	2462
	Arprt Elev	2462

AL-553 (USAF)

FAIRCHILD AFB (KSKA)

V * When ALS inop, increase CAT A RVR to 55, vis to 1 mile, CAT B RVR to 60, vis to 1 1/4 miles, and CAT CDE vis to 2 1/2 miles.
 ** Circling not authorized S of Rwy 5-23.

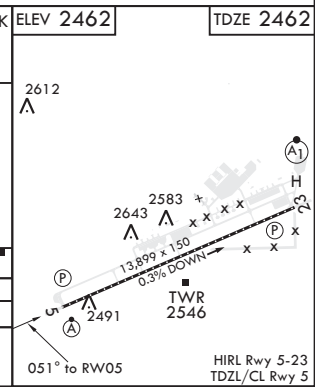
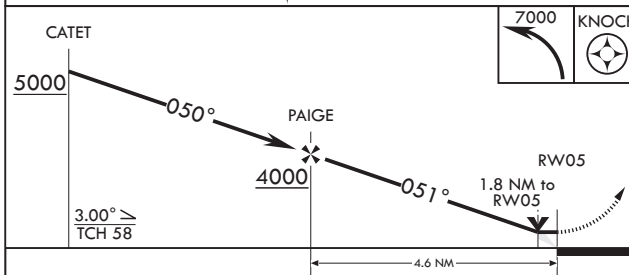
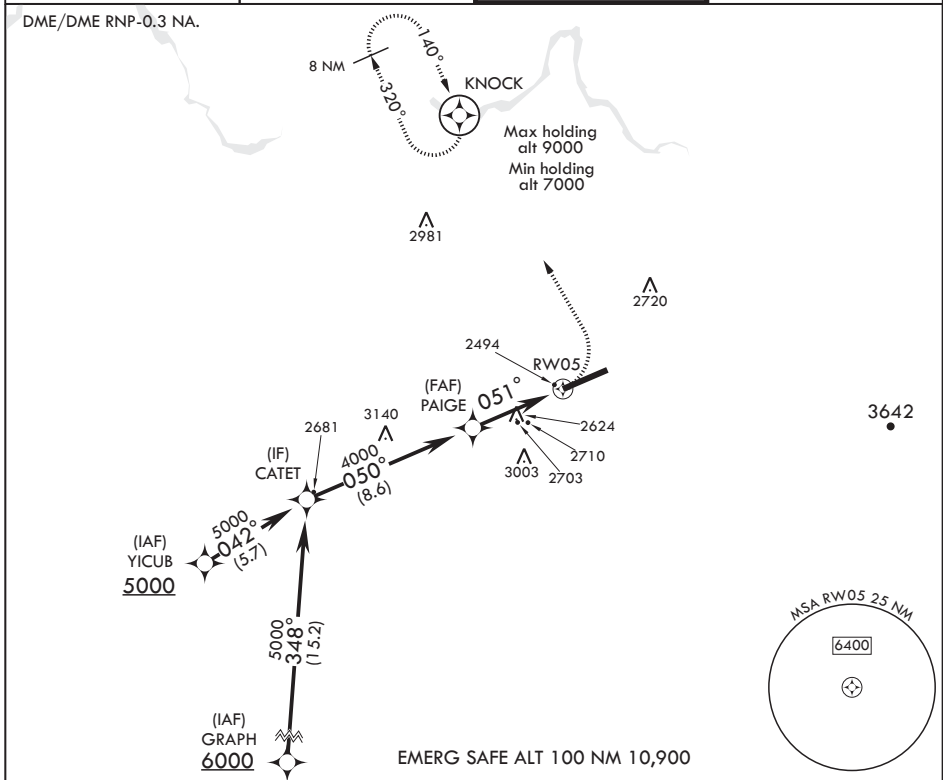
ALSF-2

MISSED APPROACH: Climb to 7000 via left turn direct KNOCK and hold, continue climb to hold to 7000.

ATIS
257.625

SPOKANE APP CON
123.75 282.25 208°-028°
133.35 263.0 029°-207°

TOWER
120.35 233.7

GND CON
123.6 275.8



CATEGORY	A	B	C	D	E
LNAV MDA*	3080/24 618 (700-1/2)		3080-1 3/8 618		(700-1 3/8)
C CIRCLING**	3080-1 618 (700-1)		3080-1 3/4 618 (700-1 3/4)	3080-2 618 (700-2)	3500-3 1038 (1100-3)

RNAV (GPS) RWY 5

NW-1, 25 MAR 2021 to 22 APR 2021

NW-1, 25 MAR 2021 to 22 APR 2021