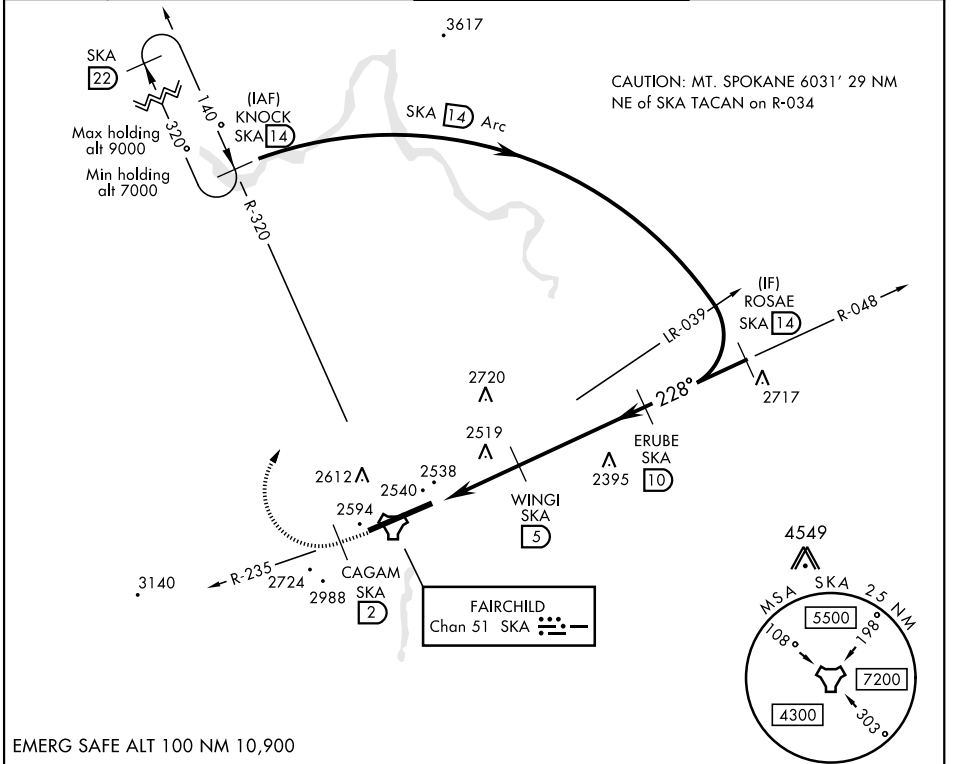


SPOKANE, WASHINGTON

# TACAN RWY 23

TACAN SKA Chan <b>51</b>	APCH CRS <b>228°</b>	Rwy Idg <b>13,899</b> TDZE <b>2423</b> Arprt Elev <b>2462</b>	AL-553 [USAF]	FAIRCHILD AFB (KSKA)
▼ * When ALS inop, increase CAT AB RVR to 55 and vis to 1 mile, CAT CDE RVR to 60, vis to 1½ miles. ** Circling S of Rwy 5-23 NA.			ALS-F-1 <b>(A1)</b>	MISSED APPROACH: Climb to 7000 via SKA TACAN R-235. At SKA 2 DME, turn right heading 340° to intercept SKA R-320 to KNOCK and hold, continue climb in hold to 7000.
ATIS <b>257.625</b>	SPOKANE APP CON 029°-207° <b>133.35 263.0</b> 208°-028° <b>123.75 282.25</b>	FAIRCHILD TOWER <b>120.35 233.7</b>	GND CON <b>123.6 275.8</b>	



EMERG SAFE ALT 100 NM 10,900

7000 SKA R-235	CAGAM SKA 2	hdg 340°	ELEV 2462	TDZE 2423	
TACAN	ITODE 2.6	WINGI 5	ERUBE 10	ROSAE R-048 14	
	3600	4500	5000	6000	
	5 NM	3.0 NM			
CATEGORY	A	B	C	D	E
S-23 *	2820/24	397 (400-½)	2820/35	397	(400-¾)
CIRCLING **	2900-1 438 (500-1)	2920-1 458 (500-1)	3040-1½ 578 (600-1½)	3040-2 578 (600-2)	3500-3 1038(1100-3)
	HIRL Rwy 5-23 TDZL/CL Rwy 5				

SPOKANE, WASHINGTON 47°37'N-117°39'W FAIRCHILD AFB (KSKA)

Amtd 3 24MAY18

# TACAN RWY 23

NW-1, 25 MAR 2021 to 22 APR 2021

NW-1, 25 MAR 2021 to 22 APR 2021