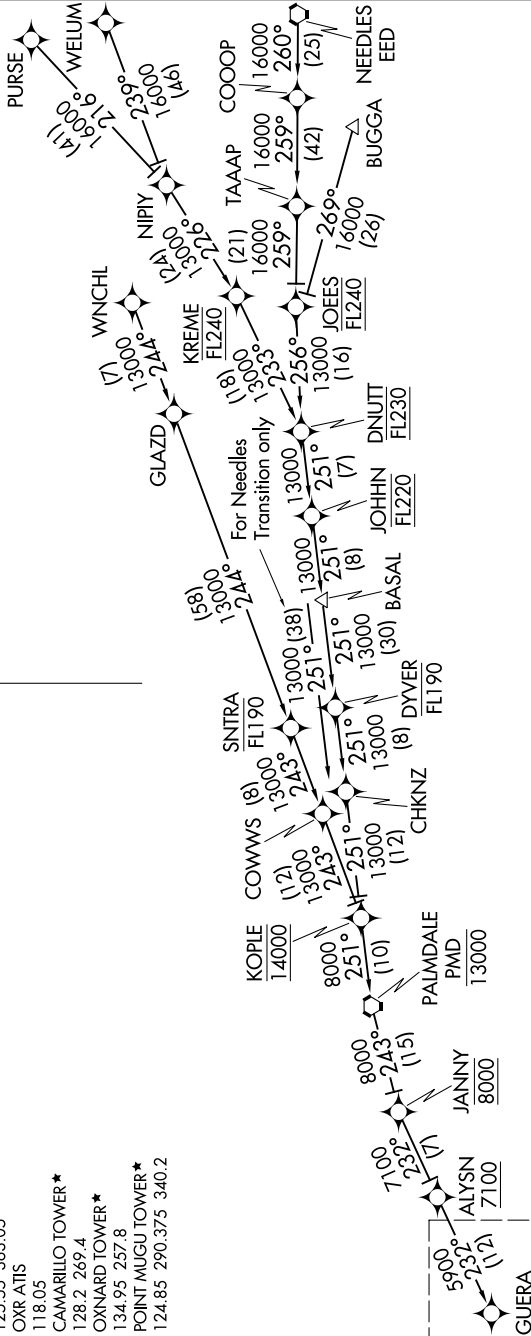


GUERA TWO ARRIVAL (RNAV) Transition Routes

OXNARD, CALIFORNIA

SW-3, 25 MAR 2021 to 22 APR 2021

- SOCAL APP CON
120.4 360.6
- CMA ATIS
126.025
- KNITD ATIS *
- 125.55 363.05
- OKR ATIS
118.05
- CAMARILLO TOWER *
- 128.2 269.4
- OXNARD TOWER *
- 134.95 257.8
- POINT MUGU TOWER *
- 124.85 290.375 340.2



- NOTE: RADAR required.
- NOTE: RNAV 1.
- NOTE: DME/DME/IRU or GPS required.
- NOTE: Turbojet and turboprop aircraft only.
- NOTE: KREME TRANSITION restricted to KLAS departures only.
- NOTE: WNCHL TRANSITION ATC assigned only.

See following page for Arrival Routes.

- BUGGA TRANSITION (BUGGA.GUERA2)
- KREME TRANSITION (KREME.GUERA2)
- NEEDLES TRANSITION (EED.GUERA2)
- PURSE TRANSITION (PURSE.GUERA2)
- WELUM TRANSITION (WELUM.GUERA2)
- WNCHL TRANSITION (WNCHL.GUERA2)

NOTE: Chart not to scale.

(CONTINUED ON FOLLOWING PAGE)

SW-3, 25 MAR 2021 to 22 APR 2021