

LOC I-FTY 109.1	APP CRS 085°	Rwy Idg TDZE Apt Elev	5797 808 841
---------------------------	------------------------	-----------------------------	---

ILS or LOC RWY 8

FULTON COUNTY EXECUTIVE/CHARLIE BROWN FIELD (FTY)

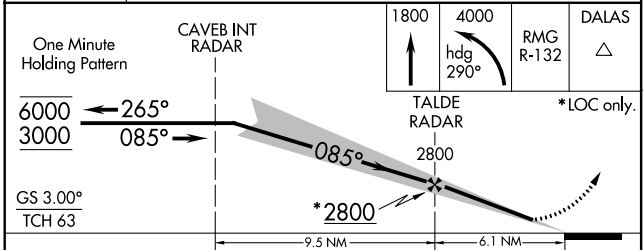
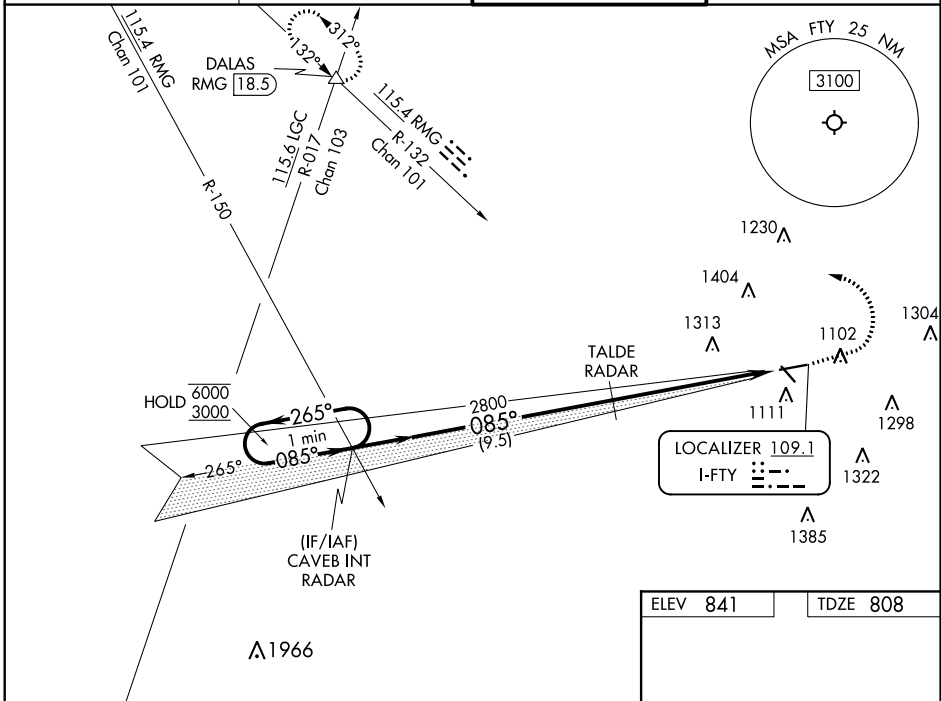
RADAR required to define TALDE.
RADAR required for procedure entry.

⚠ Circling Rwy 14, 32 NA at night. Rwy 8 helicopter visibility reduction below ¾ SM NA.
⚠ For inop ALS, increase S-LOC 8 Cat A visibility to 1 SM, Cat C/D visibility to 2½ SM.
Ridge with trees to 1299' MSL between FAF and runway threshold may be obscured by clouds even with airfield ceiling at or above procedure minimums.

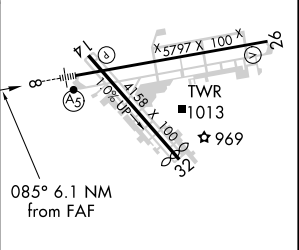
MALSRS

MISSED APPROACH: Climb to 1800 then climbing left turn to 4000 on heading 290° and RMG R-132 to DALAS INT/ RMG VORTAC 18.5 DME and hold.

ATIS 120.175	ATLANTA APP CON 121.0 268.7	FULTON COUNTY TOWER 118.45 257.8	GND CON 121.7 348.6
------------------------	---------------------------------------	--	-------------------------------



ELEV 841	TDZE 808
----------	----------



CATEGORY	A	B	C	D
S-ILS 8	1058-½ 250 (300-½)			
S-LOC 8	1640-¾	832 (800-¾)	1640-1⅞	832 (800-1⅞)
CIRCLING	1640-1 799 (800-1)	1640-1¼ 799 (800-1¼)	1740-2¾ 899 (900-2¾)	1740-3 899 (900-3)

HIRL Rwy 8-26	MIRL Rwy 14-32	REIL Rws 14, 26 and 32			
FAF to MAP 6.1 NM					
Knots	60	90	120	150	180
Min:Sec	6:06	4:04	3:03	2:26	2:02

ILS or LOC RWY 8

SE-4, 25 MAR 2021 to 22 APR 2021

SE-4, 25 MAR 2021 to 22 APR 2021