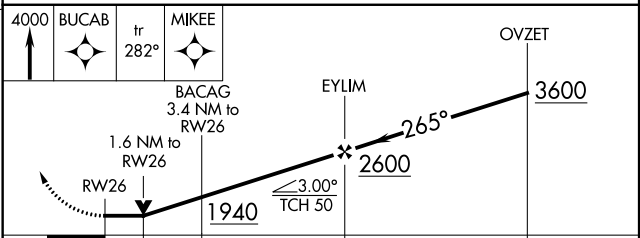
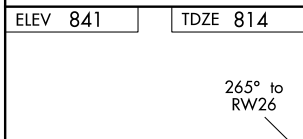
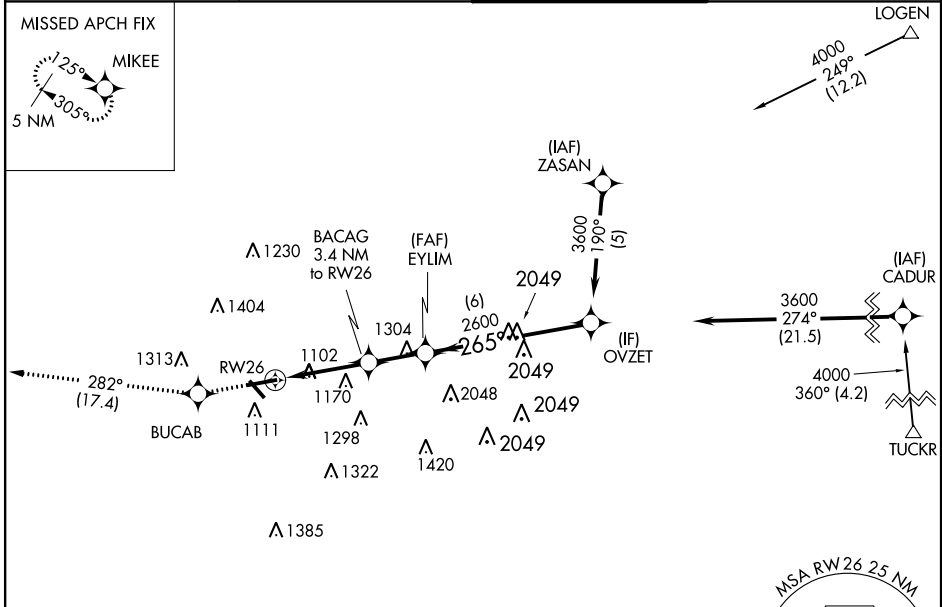


WAAS CH 65930 W26A	APP CRS 265°	Rwy Idg TDZE Apt Elev	5797 814 841
--	------------------------	-----------------------------	---

RNAV (GPS) RWY 26

FULTON COUNTY EXECUTIVE/CHARLIE BROWN FIELD (F'TY)

RNP APCH.		MISSED APPROACH: Climb to 4000 direct BUCAB and on track 282° to MIKEE and hold.	
<p>▼ Circling Rwy 14, 32 NA at night.</p> <p>▲ Rwy 26 helicopter visibility reduction below ¾ SM NA.</p>			
ATIS 120.175	ATLANTA APP CON 121.0 268.7	FULTON COUNTY TOWER 118.45 257.8	GND CON 121.7 348.6



CATEGORY	A	B	C	D
LP MDA	1360-1	546 (600-1)	1360-1½	546 (600-1½)
LNAV MDA	1480-1	666 (700-1)	1480-1¾	666 (700-1¾)
C CIRCLING	1480-1 639 (700-1)	1520-1 679 (700-1)	1740-2¾ 899 (900-2¾)	1740-3 899 (900-3)

HIRL Rwy 8-26
MIRL Rwy 14-32
REIL Rwy 14, 26 and 32

SE-4, 25 MAR 2021 to 22 APR 2021

SE-4, 25 MAR 2021 to 22 APR 2021