

APP CRS **085°**  
 Rwy Idg **5797**  
 TDZE **808**  
 Apt Elev **841**

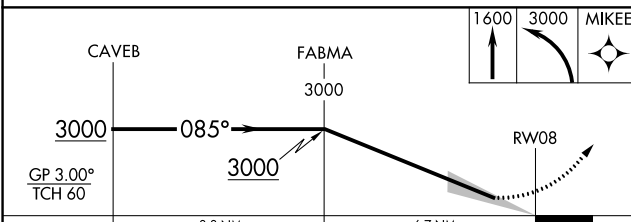
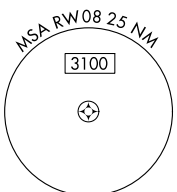
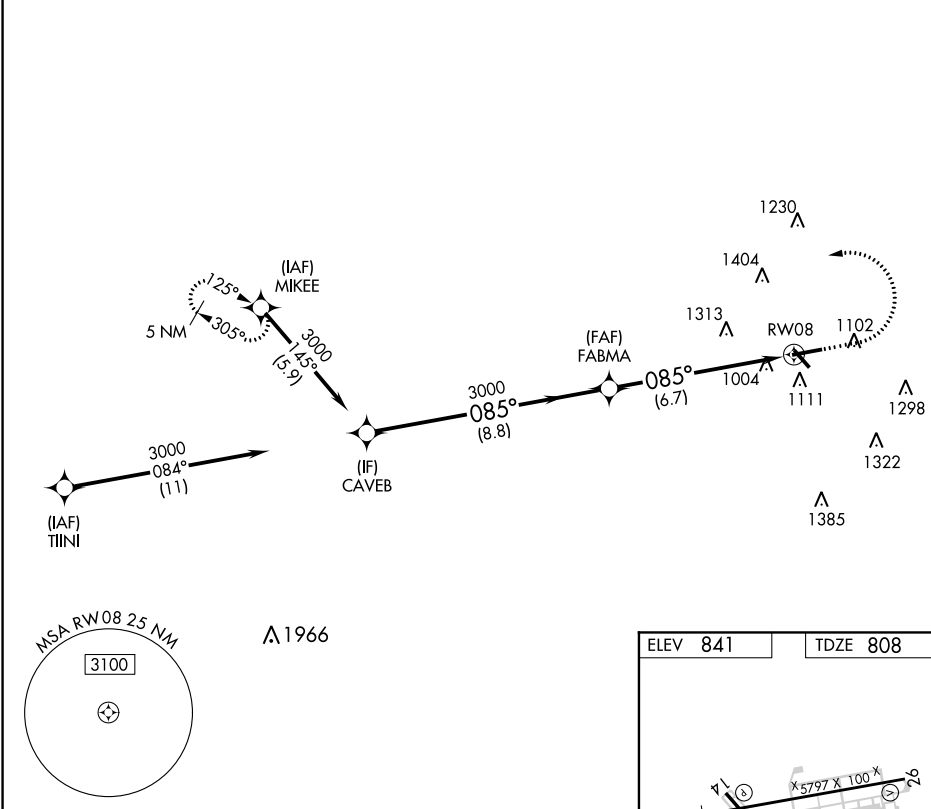
# RNAV (RNP) Z RWY 8

FULTON COUNTY EXECUTIVE/CHARLIE BROWN FIELD (F<sup>T</sup>Y)

RNP AR APCH.  
 ▼ For uncompensated Baro-VNAV systems, procedure NA below -11°C or above 54°C. Ridge with trees to 1299' MSL between FAF and runway threshold may be obscured by clouds even with airfield ceiling at or above procedure minimums.

MALSRL  
  
 MISSED APPROACH: Climb to 1600 then climbing left turn to 3000 direct MIKEE and hold.

ATIS <b>120.175</b>	ATLANTA APP CON <b>121.0 268.7</b>	FULTON COUNTY TOWER <b>118.45 257.8</b>	GND CON <b>121.7 348.6</b>
------------------------	---------------------------------------	--------------------------------------------	-------------------------------



ELEV 841	TDZE 808
----------	----------

Diagram of RWY 8 showing TWX 5797 X 100 X 20, TWX 1128 X 100 X 32, and TWX 1105 X 100 X 32. A TWR 1013 and a star 969 are also shown.

HIRL Rwy 8-26  
 MIRL Rwy 14-32  
 REIL Rwsy 14, 26 and 32

CATEGORY	A	B	C	D
RNP 0.30 DA		1401-1¼	593 (600-1¼)	

**AUTHORIZATION REQUIRED**

SE-4, 25 MAR 2021 to 22 APR 2021

SE-4, 25 MAR 2021 to 22 APR 2021