

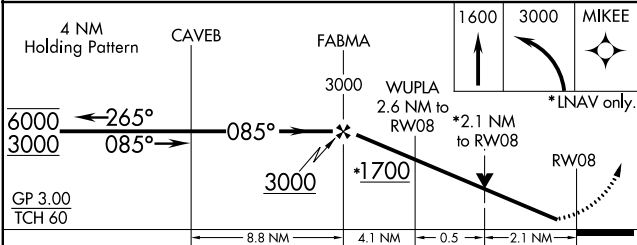
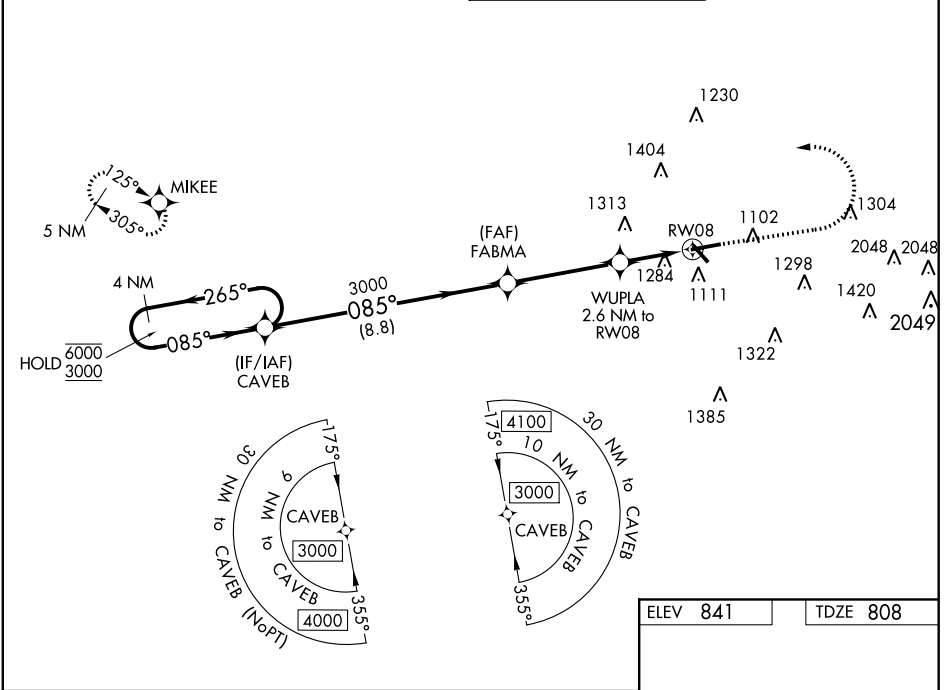
WAAS CH 65804 W08A	APP CRS 085°	Rwy ldg TDZE Apt Elev	5797 808 841
--	------------------------	-----------------------------	---

RNAV (GPS) Y RWY 8

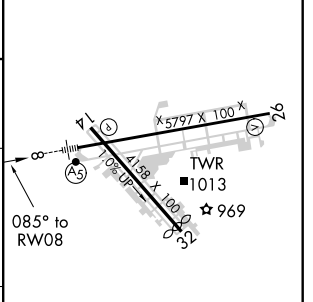
FULTON COUNTY EXECUTIVE/CHARLIE BROWN FIELD (F'TY)

RNP APCH.	MALSRS	MISSED APPROACH: Climb to 1600 then climbing left turn to 3000 direct MIKEE and hold.
<p>▼ Circling Rwy 14, 32 NA at night. Rwy 8 helicopter visibility reduction below 3/4 SM NA.</p> <p>▲ For uncompensated Baro-VNAV systems, LNAV/VNAV NA below -11°C or above 54°C.</p> <p>▲ For inop ALS, increase LNAV/VNAV all Cats visibility to 2 1/2 SM and LNAV Cat C/D to 2 SM. Ridge with trees to 1299' MSL between FAF and runway threshold may be obscured by clouds even with airfield ceiling at or above procedure minimums.</p>		

ATIS 120.175	ATLANTA APP CON 121.0 268.7	FULTON COUNTY TOWER 118.45 257.8	GND CON 121.7 348.6
------------------------	---------------------------------------	--	-------------------------------



ELEV 841	TDZE 808
----------	----------



CATEGORY	A	B	C	D
LPV DA		1058-1/2	250 (300-1/2)	
LNAV/VNAV DA		1637-17/8	829 (800-17/8)	
LNAV MDA	1540-1/2	732 (700-1/2)	1540-15/8	732 (700-15/8)
C CIRCLING	1540-1	699 (700-1)	1740-2 3/4 899 (900-2 3/4)	1740-3 899 (900-3)

HIRL Rwy 8-26
MIRL Rwy 14-32
REIL Rws 14, 26 and 32

SE-4, 25 MAR 2021 to 22 APR 2021

SE-4, 25 MAR 2021 to 22 APR 2021