

OXNARD, CALIFORNIA

# ILS Y or LOC/DME RWY 21

LOC/DME I-RRG <b>109.3</b> Chan 30	APCH CRS <b>212°</b>	Rwy Idg <b>11,102</b> TDZE <b>13</b> Arprt Elev <b>13</b>
--	-------------------------	---

AL-925 [USN]

POINT MUGU NAS  
(NAVAL BASE VENTURA CO)(KNTD)

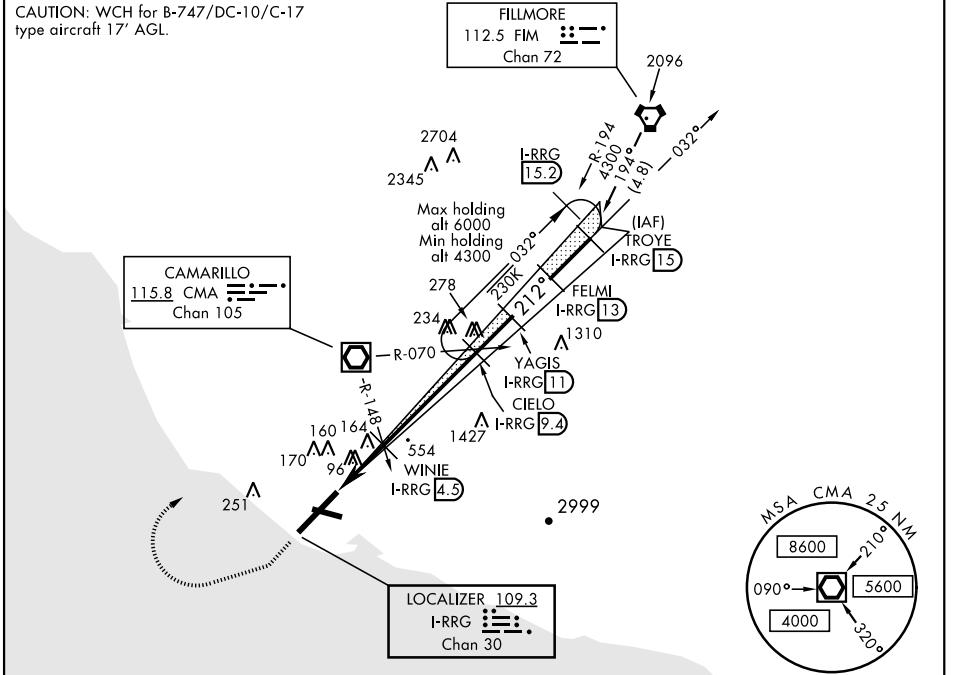
DME or RADAR required.



MISSED APPROACH: Climb to 500 via hdg 212°, then climbing right turn to 3000 via hdg 247°, then climbing right turn to 5000 direct CMA VOR/DME, then via CMA R-070 to CIELO and hold.

ATIS ★ <b>125.55 363.05</b>	POINT MUGU APP CON <b>128.65 307.275</b>	POINT MUGU TOWER ★ <b>124.85 290.375</b>	GND CON <b>121.6 360.2</b>	CLNC DEL <b>120.75 279.55</b>	ASR/PAR
--------------------------------	---	---	-------------------------------	----------------------------------	---------

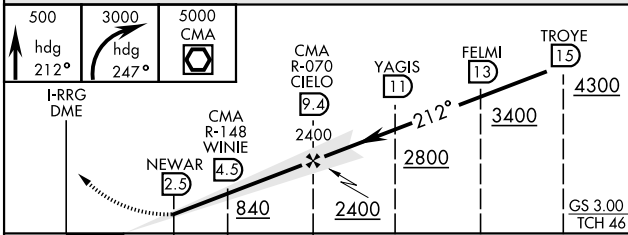
CAUTION: WCH for B-747/DC-10/C-17 type aircraft 17' AGL.



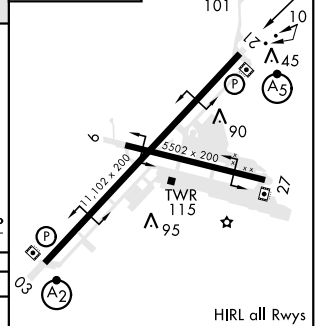
SW-3, 25 MAR 2021 to 22 APR 2021

SW-3, 25 MAR 2021 to 22 APR 2021

EMERG SAFE ALT 100 NM 12,100



ELEV 13	212° 7.2 NM from FAF
TDZE 13	



CATEGORY	A	B	C	D
S-ILS 21*	213-½ 200 (200-½)			
S-LOC 21**	420-½	407 (500-½)	420-¾	407 (500-¾)
CIRCLING ***	440-1	480-1	480-1½	580-2
	427 (500-1)	467 (500-1)	467 (500-1½)	567 (600-2)

FAF to MAP 6.7 NM					
Knots	60	90	120	150	180
Min:Sec	6:54	4:36	3:27	2:46	2:18

OXNARD, CALIFORNIA  
Amdt 3 31DEC20

34°07'N-119°07'W

POINT MUGU NAS (KNTD)  
(NAVAL BASE VENTURA CO)

# ILS Y or LOC/DME RWY 21