

OXNARD, CALIFORNIA

ILS Z or LOC/DME RWY 21

| | | |
|--|-------------------------|---|
| LOC/DME I-RRG 109.3 Chan 30 | APCH CRS 212° | Rwy Idg 11,102 TDZE 13 Arprt Elev 13 |
|--|-------------------------|---|

AL-925 [USN]

POINT MUGU NAS
(NAVAL BASE VENTURA CO)(KNTD)

DME or RADAR required.

- When ALS inop, increase vis to 3/4 mile.
- When ALS inop, increase vis CAT AB to 1 mile, CAT CD vis to 1 1/2 miles.
- Clcirng not authorized E of Rwy 3-21.

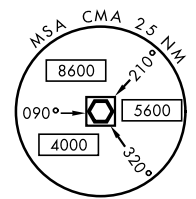
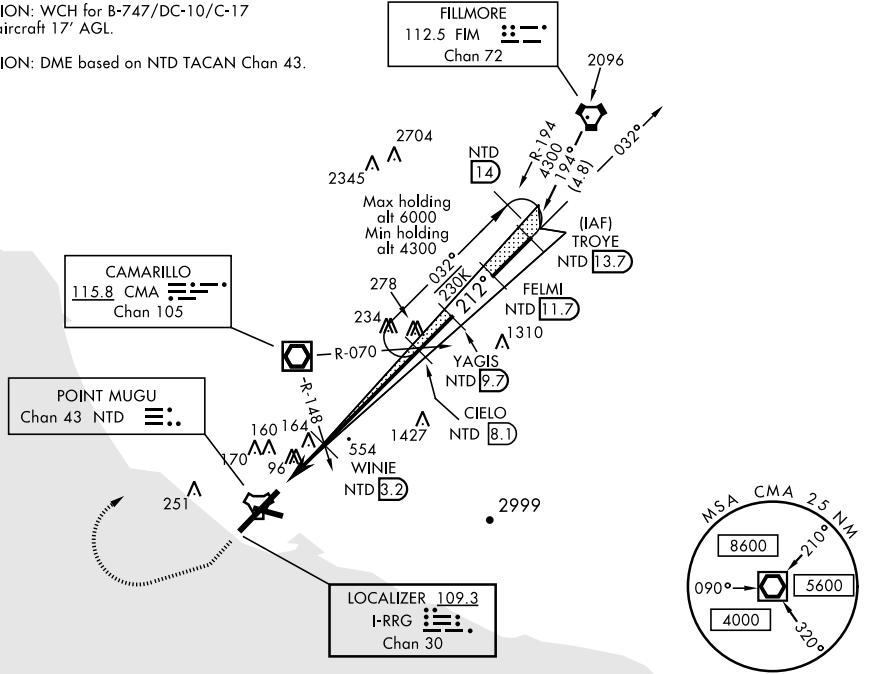


MISSED APPROACH: Climb to 500 via hdg 212°, then climbing right turn to 3000 via hdg 247° then climbing right turn to 5000 direct CMA VOR/DME, then via CMA R-070 to CIELO and hold.

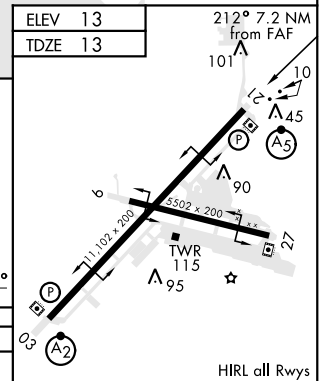
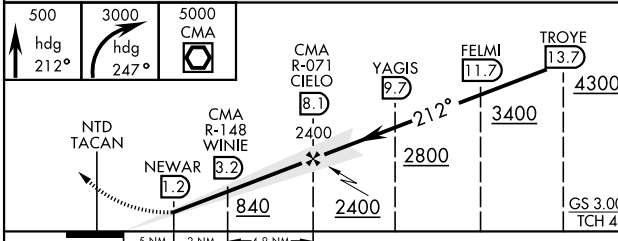
| | | | | | |
|--------------------------------|---|---|-------------------------------|----------------------------------|---------|
| ATIS ★ 125.55 363.05 | POINT MUGU APP CON 128.65 307.275 | POINT MUGU TOWER ★ 124.85 290.375 | GND CON 121.6 360.2 | CLNC DEL 120.75 279.55 | ASR/PAR |
|--------------------------------|---|---|-------------------------------|----------------------------------|---------|

CAUTION: WCH for B-747/DC-10/C-17 type aircraft 17' AGL.

CAUTION: DME based on NTD TACAN Chan 43.



EMERG SAFE ALT 100 NM 12,100



| CATEGORY | A | B | C | D |
|-------------|-------------|---------------|-----------------|---------------|
| S-ILS 21* | 213-1/2 | | 200 | (200-1/2) |
| S-LOC 21** | 420-1/2 | 407 (500-1/2) | 420-3/4 | 407 (500-3/4) |
| CIRCLING*** | 440-1 | 480-1 | 480-1 1/2 | 580-2 |
| | 427 (500-1) | 467 (500-1) | 467 (500-1 1/2) | 567 (600-2) |

| FAF to MAP 6.7 NM | | | | | |
|-------------------|------|------|------|------|------|
| Knots | 60 | 90 | 120 | 150 | 180 |
| Min:Sec | 6:42 | 4:28 | 3:21 | 2:41 | 2:14 |

OXNARD, CALIFORNIA
Amdt 3 31DEC20

34°07'N-119°07'W

POINT MUGU NAS (KNTD)
(NAVAL BASE VENTURA CO)

ILS Z or LOC/DME RWY 21

SW-3, 25 MAR 2021 to 22 APR 2021

SW-3, 25 MAR 2021 to 22 APR 2021