

OXNARD, CALIFORNIA


RNAV (GPS) RWY 21

| | | |
|----------|-----------|--------|
| APCH CRS | Rwy Idg | 11,102 |
| 212° | TDZE | 13 |
| | Arpt Elev | 13 |

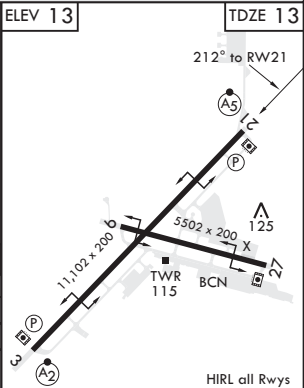
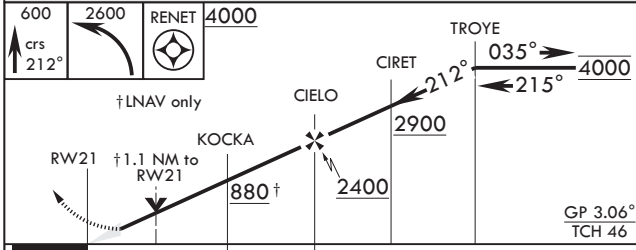
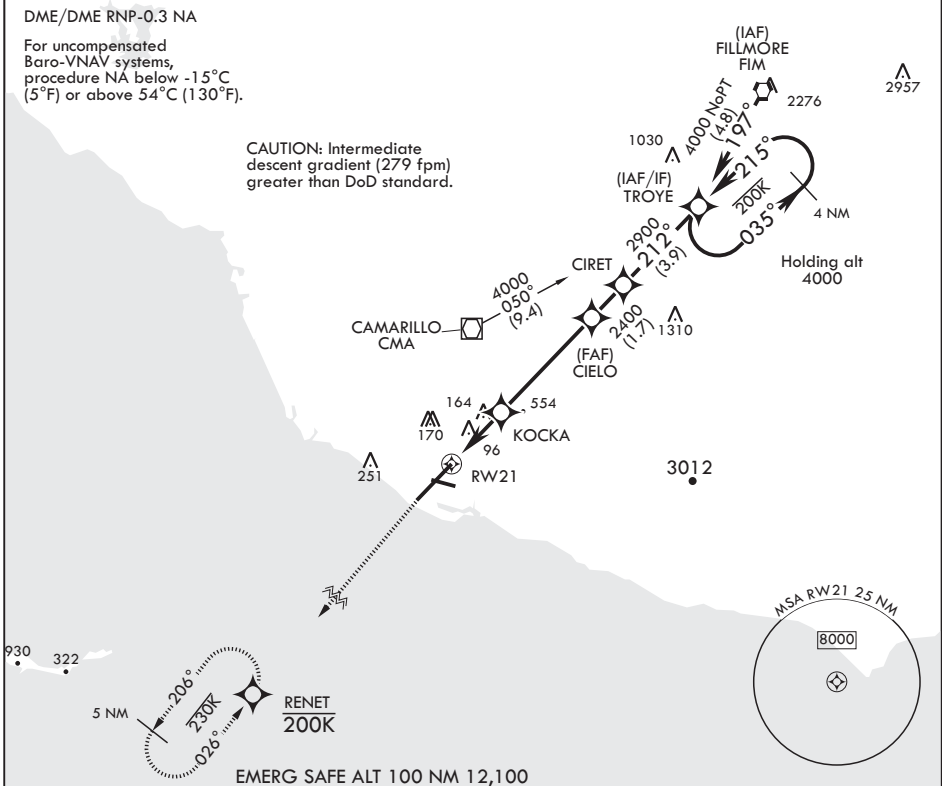
AL-925 (USN)

POINT MUGU NAS (NAVAL BASE VENTURA CO) (KNTD)

* When ALS inop, increase vis to 7/8 mile.
 ** When ALS inop, increase CAT AB vis to 1 mile; CAT CD vis to 1 1/8 miles.
 *** Circling not authorized E of Rwy 3-21.

MALSR  MISSED APPROACH: Climb to 600 then climbing left turn to 2600 direct RENET and hold.

| | | | | | |
|---------------|-----------------|----------------|-------------|---------------|---------|
| ATIS* | APP CON/DEP CON | TOWER* | GND CON | CLNC DEL | ASR/PAR |
| 125.55 363.05 | 128.65 307.275 | 124.85 290.375 | 121.6 360.2 | 120.75 279.55 | |



| CATEGORY | A | B | C | D |
|----------------|-------------------|-------------------|---------------------------|-------------------|
| LNNAV/VNAV DA* | 289-1/2 | 276 | (300-1/2) | |
| LNNAV MDA** | 420-1/2 407 | (500-1/2) | 420-3/4 407 | (500-3/4) |
| CIRCLING*** | 440-1 427 (500-1) | 480-1 467 (500-1) | 480-1 1/2 467 (500-1 1/2) | 580-2 567 (600-2) |

OXNARD, CALIFORNIA
Amdt 5 31DEC20

34°07'N - 119°07'W POINT MUGU NAS (NAVAL BASE VENTURA CO) (KNTD)

RNAV (GPS) RWY 21

SW-3, 25 MAR 2021 to 22 APR 2021

SW-3, 25 MAR 2021 to 22 APR 2021