

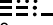
# HIGHWAY VISUAL RWY 25R

TED STEVENS ANCHORAGE INTL (ANC) (PANC)

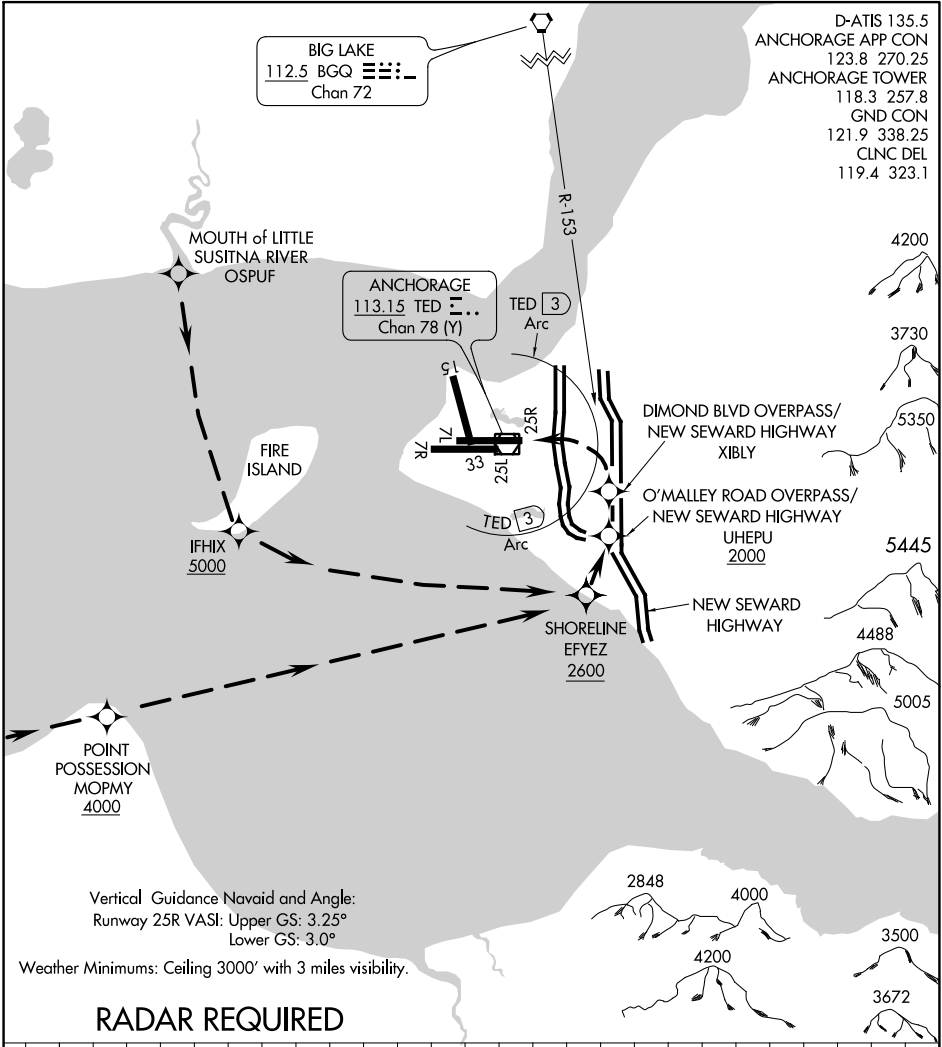
AL-1500 (FAA)

ANCHORAGE, ALASKA

D-ATIS 135.5  
 ANCHORAGE APP CON 123.8 270.25  
 ANCHORAGE TOWER 118.3 257.8  
 GND CON 121.9 338.25  
 CLNC DEL 119.4 323.1

BIG LAKE  
 112.5 BGQ   
 Chan 72

ANCHORAGE  
 113.15 TED   
 Chan 78 (Y)



Vertical Guidance Navaid and Angle:  
 Runway 25R VASI: Upper GS: 3.25°  
 Lower GS: 3.0°

Weather Minimums: Ceiling 3000' with 3 miles visibility.

## RADAR REQUIRED

NM	1	2	3	4	5	6	7	8	9	10	11	12	13	14	15	16	17	18	19	20	21	22	23	24	25	26
----	---	---	---	---	---	---	---	---	---	----	----	----	----	----	----	----	----	----	----	----	----	----	----	----	----	----

HIGHWAY VISUAL RWY 25R  
PROCEDURE NOT AUTHORIZED AT NIGHT

# HIGHWAY VISUAL RWY 25R

Amdt 1 09FEB12

61°10'N-150°00'W

ANCHORAGE, ALASKA

TED STEVENS ANCHORAGE INTL (ANC) (PANC)

AK, 25 FEB 2021 to 22 APR 2021

AK, 25 FEB 2021 to 22 APR 2021