

ILS RWY 15

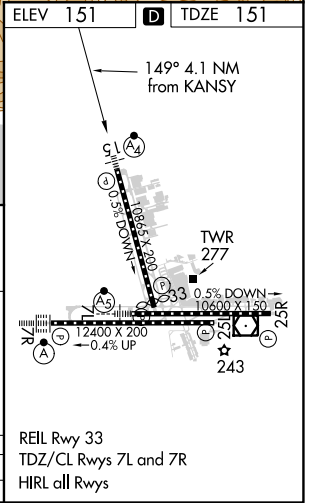
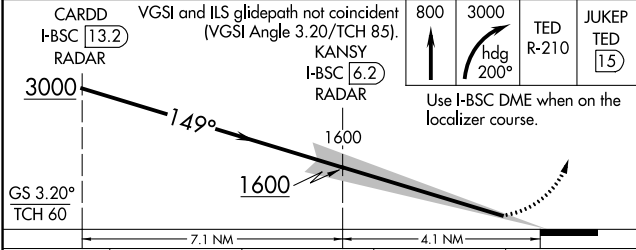
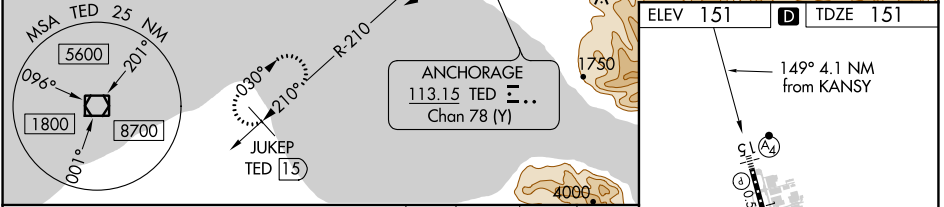
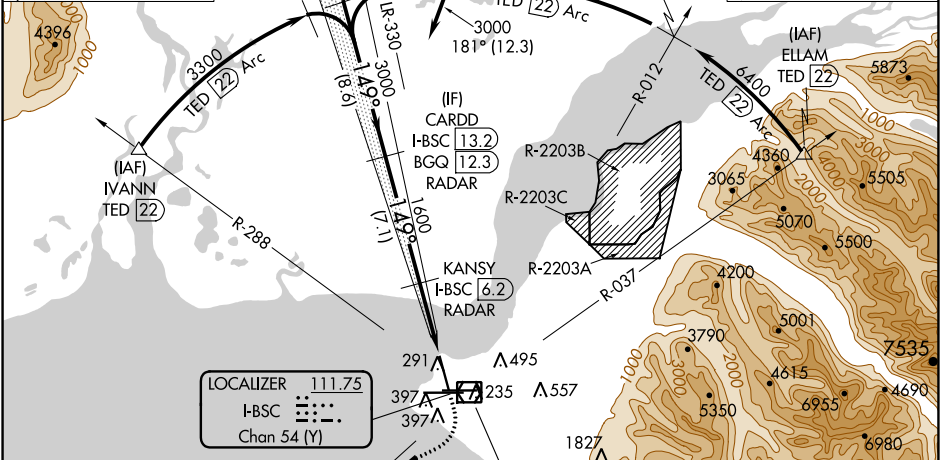
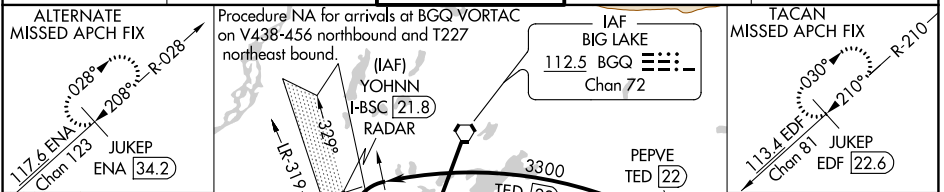
TED STEVENS ANCHORAGE INTL (ANC) (PANC)

LOC/DME I-BSC 111.75 Chan 54 (Y)	APP CRS 149°	Rwy Idg TDZE Apt Elev	10000 151 151
--	------------------------	-----------------------------	--

DME required.
Inop table does not apply.

MALSF
(A) **≡≡≡**
MISSED APPROACH: Climb to 800 then climbing right turn to 3000 on heading 200° and TED VOR/DME R-210 to JUKEP/TED 15 DME and hold. (TACAN aircraft climb to 800 then climbing right turn to 3000 on heading 200 and on EDF TACAN R-210 to JUKEP/EDF 22.6 DME and hold

D-ATIS 135.5	ANCHORAGE APP CON 118.6 290.5	ANCHORAGE TOWER 118.3 257.8	GND CON 121.9 338.25	CLNC DEL 119.4 323.1
------------------------	---	---------------------------------------	--------------------------------	--------------------------------



CATEGORY	A	B	C	D
S-ILS 15	351/40	200 (200-3/4)	401/40	250 (300-3/4)

AK, 25 FEB 2021 to 22 APR 2021

AK, 25 FEB 2021 to 22 APR 2021