

LOC/DME I-ANC <b>111.3</b> Chan 50	APP CRS <b>074°</b>	Rwy Idg <b>12400</b> TDZE <b>132</b> Apt Elev <b>151</b>
--	------------------------	--

# ILS RWY 7R (SA CAT I)

## TED STEVENS ANCHORAGE INTL (ANC) (PANC)

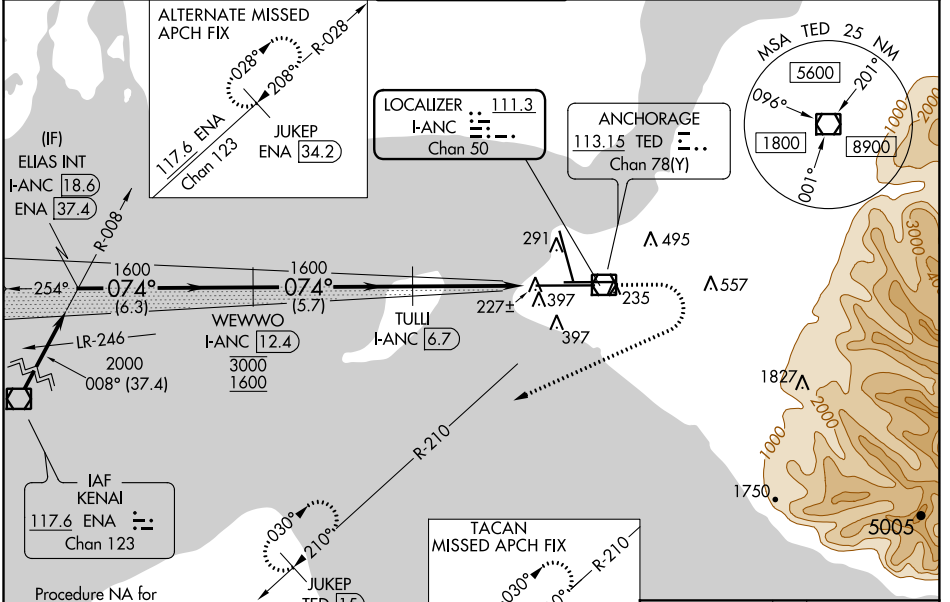
DME required.

▼ Rwy 7L threshold 6140 feet east of Rwy 7R threshold. Requires specific OPSPEC, MSPEC, or LOA approval and use of HUD to DH.

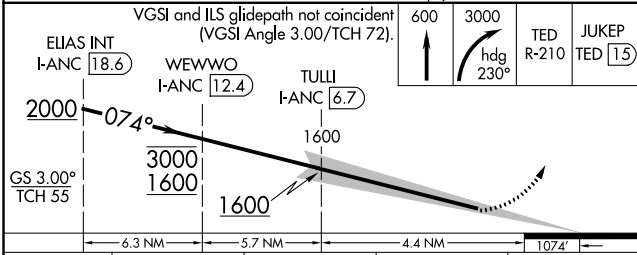
ALSIF-2

MISSED APPROACH: Climb to 600 then climbing right turn to 3000 on heading 230° TED VOR/DME R-210 to JUKEP/TED 15 DME and hold. (TACAN aircraft climb to 600 then climbing right turn to 3000 on heading 230° and EDF TACAN R-210 to JUKEP/EDF 22.6 DME and hold).

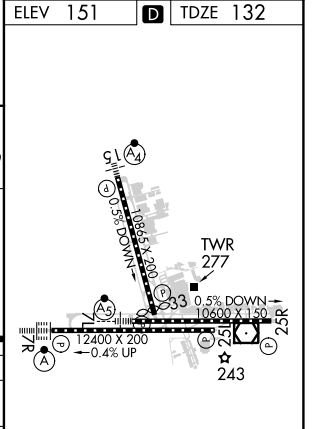
D-ATIS <b>135.5</b>	ANCHORAGE APP CON <b>118.6 290.5</b>	ANCHORAGE TOWER <b>118.3 257.8</b>	GND CON <b>121.9 338.25</b>	CLNC DEL <b>119.4 323.1</b>
------------------------	---	---------------------------------------	--------------------------------	--------------------------------



ELEV 151	TDZE 132
----------	----------



CATEGORY	A	B	C	D
S-ILS 7R	RA 245/14 150 DA 282			



**SA CATEGORY I ILS - SPECIAL AIRCREW & AIRCRAFT CERTIFICATION REQUIRED**

REIL Rwy 33  
TDZ/CL Rwy 7L and 7R  
HIRL all Rwy

AK, 25 FEB 2021 to 22 APR 2021

AK, 25 FEB 2021 to 22 APR 2021