

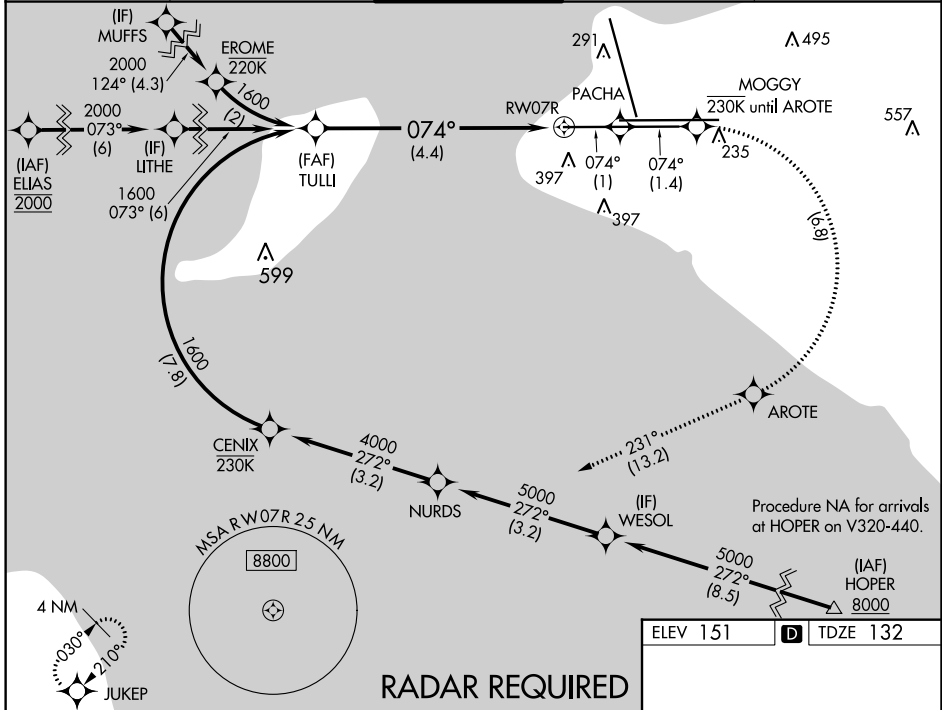
RNAV (RNP) Z RWY 7R

TED STEVENS ANCHORAGE INTL (ANC) (PANC)

APP CRS	Rwy Idg	12400
074°	TDZE	132
	Apt Elev	151

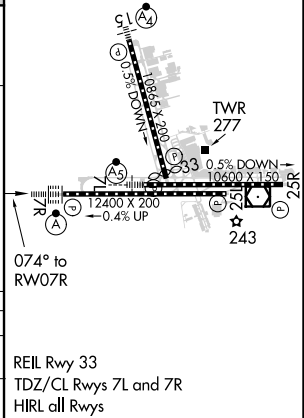
RNP AR APCH, RF required.		ALSF-2	MISSED APPROACH: Climb to 3000 on the missed approach route to JUKEP and hold.
▼ Missed approach requires RNP less than 1.0. For uncompensated Baro-VNAV systems, procedure NA below -18°C (0°F) or above 54°C (130°F). For inop ALS, increase RNP 0.30 all Cats visibility to 1½ SM.			

D-ATIS	ANCHORAGE APP CON	ANCHORAGE TOWER	GND CON	CLNC DEL
135.5	118.6 290.5	118.3 257.8	121.9 338.25	119.4 323.1



3000	PACHA	tr 074°	MOGGY	AROTE	tr 231°	JUKEP
↑	◆	↔	↷	◆	↔	◆
tr 074°		tr 074°			tr 231°	
TULLI 1600 074° RW07R 4.4 NM GP 3.00° TCH 55 See planview for multiple IF locations.						
CATEGORY	A	B	C	D		
RNP 0.30 DA	562/50 430 (500-1)					
AUTHORIZATION REQUIRED						

ELEV 151	TDZE 132
----------	----------



AK, 25 FEB 2021 to 22 APR 2021

AK, 25 FEB 2021 to 22 APR 2021

REIL Rwy 33
TDZ/CL Rwys 7L and 7R
HIRL all Rwys