

ARUNY TWO DEPARTURE

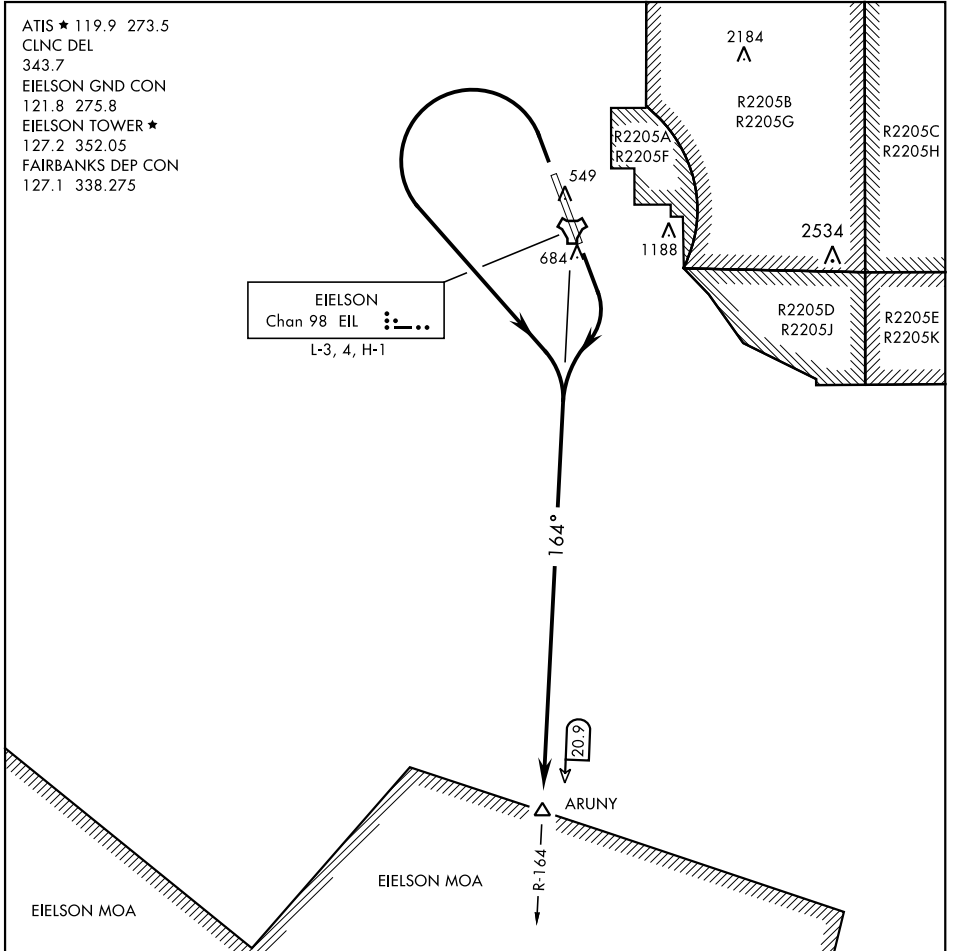
SL-1729 [USAF]

(PAEI)

FAIRBANKS, ALASKA

ATIS ★ 119.9 273.5
 CLNC DEL
 343.7
 EIELSON GND CON
 121.8 275.8
 EIELSON TOWER ★
 127.2 352.05
 FAIRBANKS DEP CON
 127.1 338.275

EIELSON
 Chan 98 EIL :...
 L-3, 4, H-1



DEPARTURE ROUTE DESCRIPTION

TAKE-OFF RWY 14 (ARUNY2-ARUNY): Turn right to intercept EIL TACAN R-164 to ARUNY. Maintain assigned altitude.

TAKE-OFF RWY 32 (ARUNY2-ARUNY): Turn left to intercept EIL TACAN R-164 to ARUNY. Maintain assigned altitude.