

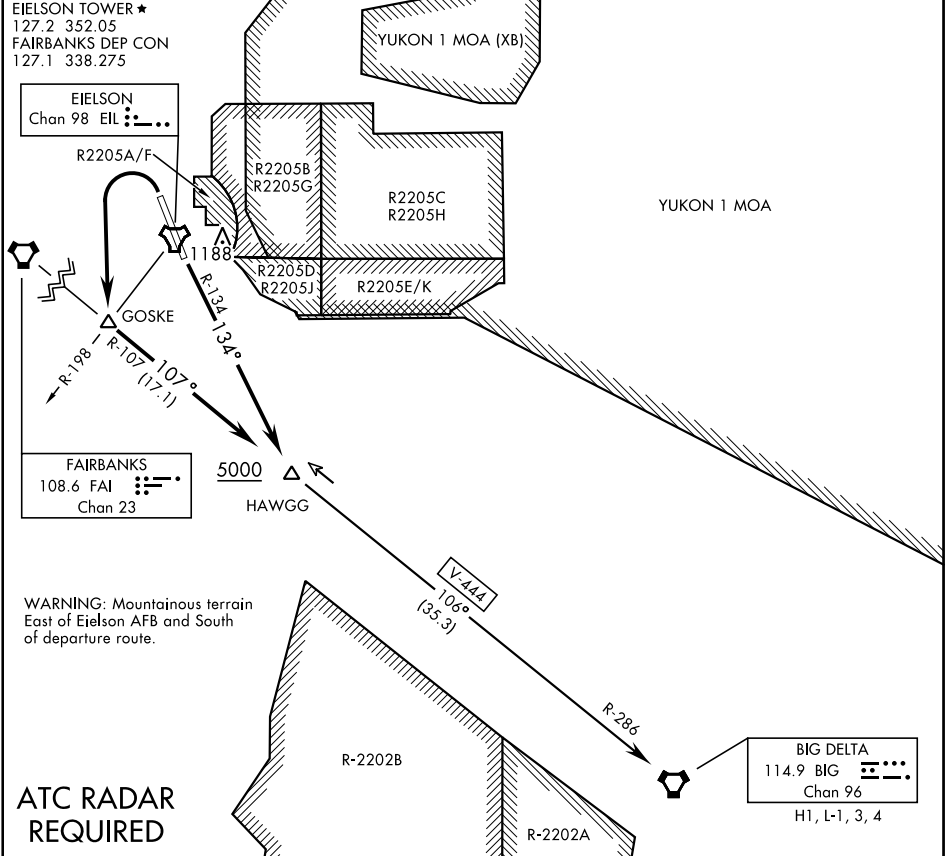
HAWGG SEVEN DEPARTURE (HAWGG7•HAWGG)

EIELSON AFB (PAEI)

FAIRBANKS, ALASKA

ATIS ★ 119.9 273.5	SHL-1729 [USAF]	YUKON 2 MOA	Rwy	Knots	60	120	180	240	300	360
CLINC DEL 343.7			32	V/V(fpm)	214	428	642	856	1070	1284
EIELSON GND CON 121.8 275.8			14	V/V(fpm)	241	482	723	964	1205	1446

ATC Climb Rate to 5000



AK, 25 MAR 2021 to 22 APR 2021

AK, 25 MAR 2021 to 22 APR 2021

DEPARTURE ROUTE DESCRIPTION

TAKE-OFF RWY 14: Turn left to join EIL TACAN R-134 to FAI VORTAC R-107. Cross HAWGG at or above 5000. Thence . . .

TAKE-OFF RWY 32: Turn left to GOSKE then continue outbound FAI VORTAC R-107 to HAWGG. Cross HAWGG at or above 5000. Thence . . .

Intercept V-444 to BIG VORTAC, then via assigned route.

HAWGG SEVEN DEPARTURE (HAWGG7•HAWGG)

FAIRBANKS, ALASKA

EIELSON AFB (PAEI)

