


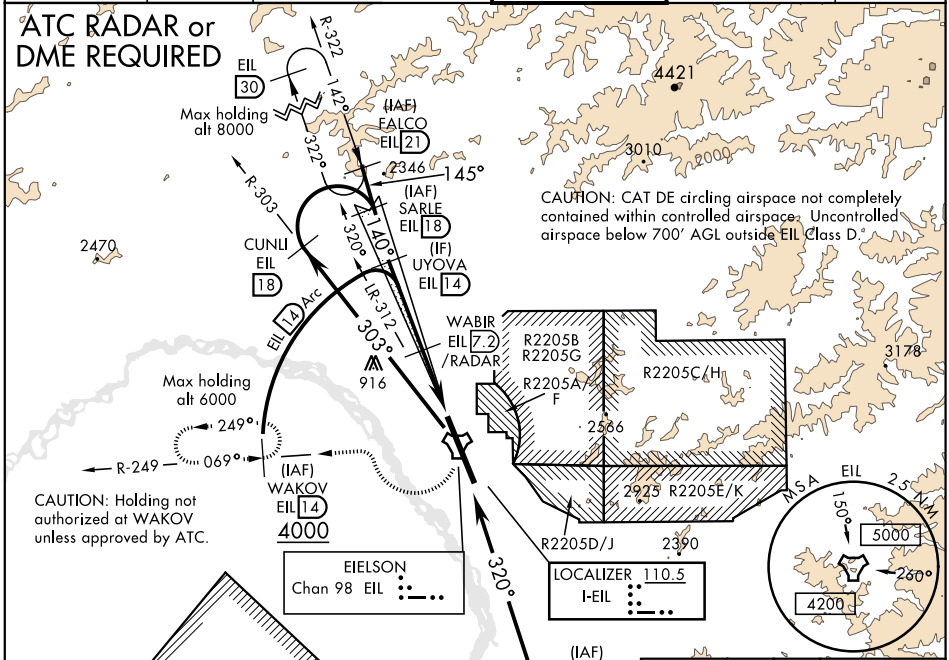
LOC I-EIL 110.5	APCH CRS 140°	Rwy ldg 14,530 TDZE 537 Arpt Elev 548	AL-1729 [USAF]	EIELSON AFB (PAEI)
---------------------------	-------------------------	--	----------------	--------------------

▲ * When ALS inop, increase RVR to 40, and vis to $\frac{3}{4}$ mile.
 ** When ALS inop, increase RVR to 55, and vis to 1 mile.
 *** Circling not authorized E of Rwy 14-32.

 ALSF-1


 MISSED APPROACH: Climb to 4000 direct EIL TACAN, continue climbing right turn to intercept EIL R-249 to WAKOV and hold. Continue climb-in-hold to 4000.

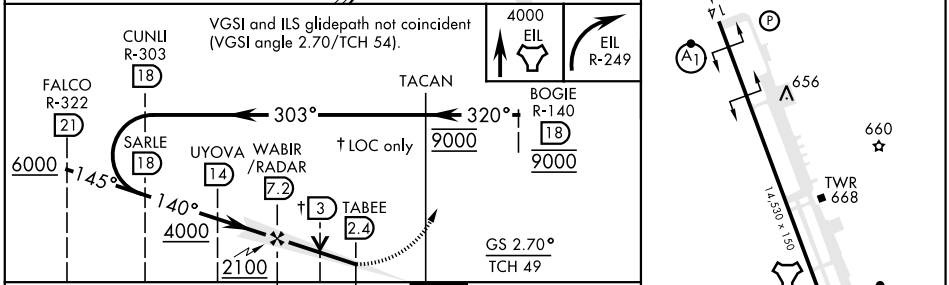
ATIS ★ 119.9 273.5	ASOS 118.525	FAIRBANKS APP CON 127.1 251.1 (360°-179°) 125.35 363.2 (180°-359°)	EIELSON TOWER ★ 127.2 352.05	GND CON 121.8 275.8	CLNC DEL 343.7
------------------------------	------------------------	--	--	-------------------------------	--------------------------



AK, 25 MAR 2021 to 22 APR 2021

AK, 25 MAR 2021 to 22 APR 2021

ELEV 548	TDZE 537
HIRL Rwy 14-32	



CATEGORY	A	B	C	D	E
S-ILS 14 *	737/24			200	(200- $\frac{1}{2}$)
S-LOC 14 **	900/24	363 (400- $\frac{1}{2}$)	900/35	363	(400- $\frac{3}{4}$)
*** CIRCLING	1000-1 452 (500-1)	1060-1 512 (600-1)	1100-1 $\frac{1}{2}$ 552 (600-1 $\frac{1}{2}$)	1260-2 $\frac{1}{4}$ 712 (800-2 $\frac{1}{4}$)	1260-2 $\frac{1}{2}$ 712 (800-2 $\frac{1}{2}$)

Rwy lgt on N 11,314' of rwy 300' wide, Rwy lgt on S 3200' of rwy 150' wide.

FAIRBANKS, ALASKA 64° 40' N-147° 06' W EIELSON AFB (PAEI)

Amtd 6 05DEC19
 TERPS