

# ILS or LOC/DME RWY 32

LOC I-EAF <b>109.9</b>	APCH CRS <b>320°</b>	Rwy Ldg <b>14,530</b>
	TDZE <b>548</b>	
	Arprt Elev <b>548</b>	

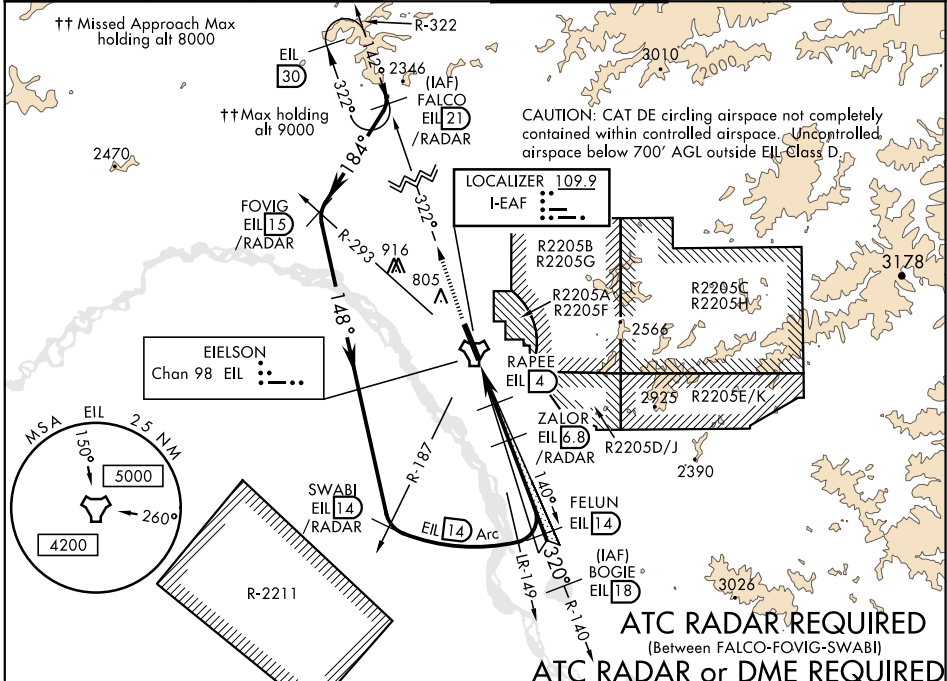
AL-1729 [USAF]

EIELSON AFB (PAEI)

▼ \*\* When ALS inop, increase RVR to 40 and vis to ¼ mile. Ⓜ ALSF-1  
▼ \*\* When ALS inop, increase CAT AB RVR to 55 and vis to 1 mile; CAT CDE RVR to 60 and vis to 1½ mile.  
\*\*\* Circling not authorized E of Rwy 14-32.

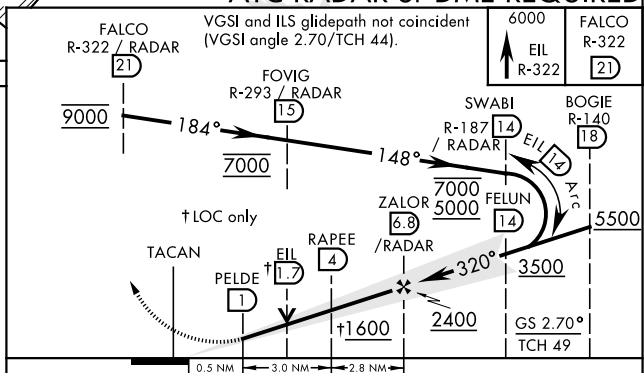
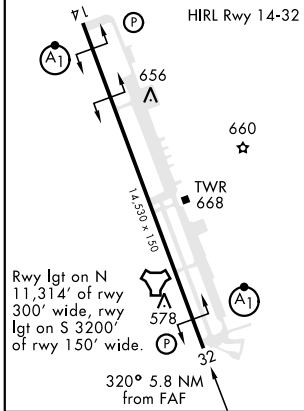
**MISSED APPROACH:** Climb to 6000 on EIL TACAN R-322 to FALCO and hold. Continue climb-in-hold to 6000.

ATIS ★ <b>119.9 273.5</b>	ASOS <b>118.525</b>	FAIRBANKS APP CON <b>127.1 251.1 (360°-179°)</b> <b>125.35 363.2 (180°-359°)</b>	EIELSON TOWER ★ <b>127.2 352.05</b>	GND CON <b>121.8 275.8</b>	CLNC DEL <b>343.7</b>
------------------------------	------------------------	--	--	-------------------------------	--------------------------



EMERG SAFE ALT 100 NM 16,000

ELEV <b>548</b>	TDZE <b>548</b>
-----------------	-----------------



CATEGORY	A	B	C	D	E
S-ILS 32*	748/24 200 (200-½)				
S-LOC 32**	940/24	392 (400-½)	940/35	392	(400-¾)
CIRCLING ***	1000-1	1060-1	1100-1½	1260-2½	1260-2½
	452 (500-1)	512 (600-1)	552 (600-1½)	712 (800-2½)	712 (800-2½)

# ILS or LOC/DME RWY 32

AK, 25 MAR 2021 to 22 APR 2021

AK, 25 MAR 2021 to 22 APR 2021