

FAIRBANKS, ALASKA

# RNAV (GPS) RWY 32

APCH CRS	Rwy Idg	14,530
320°	TDZE	548
	Arprt Elev	548

AL-1729 (USAF)

EIELSON AFB (PAEI)

**V** \* When ALS inop, increase CAT AB RVR to 55 and vis to 1 mile, CAT CDE RVR to 60 and vis to 1 1/8 miles.  
 \*\* Circling not authorized E Rwy 14-32.

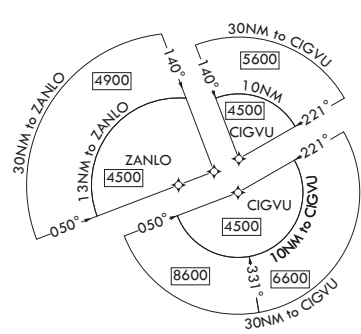
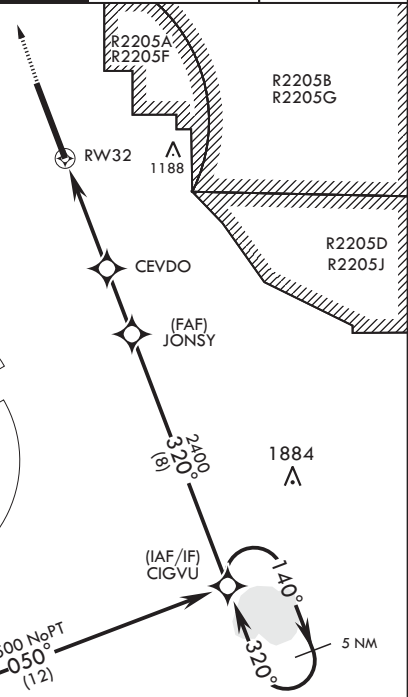
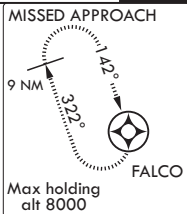
**ALSF-1** MISSED APPROACH: Climb to 1000, then climbing right turn to 6000 direct FALCO and hold, continue climb-in-hold to 6000.

<b>ATIS*</b> 119.9 273.5	<b>FAIRBANKS APP CON</b> 125.35 363.2 180°-359° 127.1 251.1 360°-179°	<b>TOWER*</b> 127.2 352.05	<b>GND CON</b> 121.8 275.8	<b>CLNC DEL</b> 343.7
-----------------------------	-----------------------------------------------------------------------------	-------------------------------	-------------------------------	--------------------------

DME/DME RNP - 0.3 NA

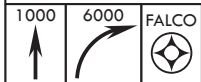
CAUTION: CAT DE circling airspace not completely contained within controlled airspace. Uncontrolled airspace below 700' AGL outside EIL Class D.

CAUTION: Approach not authorized from ZANLO when R-2211 active.

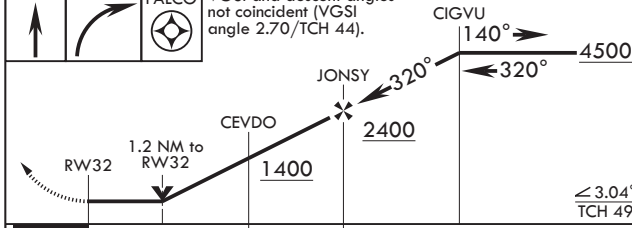


**ATC RADAR REQUIRED**

EMERG SAFE ALT 100 NM 16,000

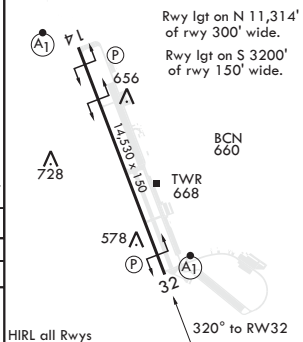


VGSI and descent angles not coincident (VGSI angle 2.70/TCH 44).



ELEV 548

TDZE 548



CATEGORY	A	B	C	D	E
LNVA MDA*	940/24 392 (400-1/2)		940/35 392		(400-3/8)
<b>C</b> CIRCLING**	1000-1 452 (500-1)	1060-1 512 (600-1)	1100-1 1/2 552 (600-1 1/2)	1260-2 1/4 712 (800-2 1/4)	1260-2 1/2 712 (800-2 1/2)

FAIRBANKS, ALASKA

64°40'N - 147°06'W

EIELSON AFB (PAEI)

Amdt 4 08NOV18  
TERPS

# RNAV (GPS) RWY 32

AK, 25 MAR 2021 to 22 APR 2021

AK, 25 MAR 2021 to 22 APR 2021