

WAAS CH 50339 W03A	APP CRS 051°	Rwy Idg TDZE 164 Apt Elev 170	3500
--	------------------------	---	-------------

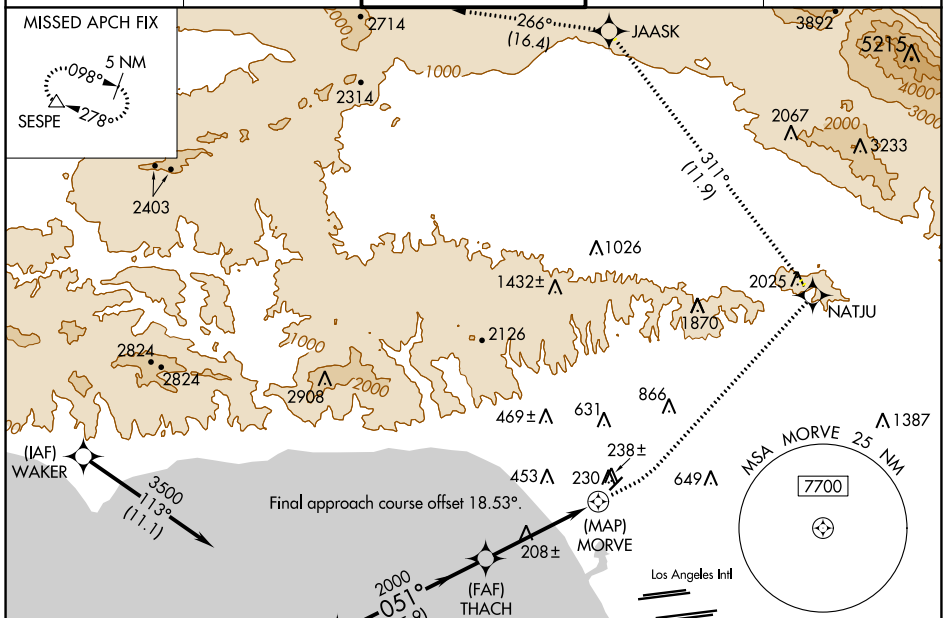
RNAV (GPS) Y RWY 3

SANTA MONICA MUNI (SMO)

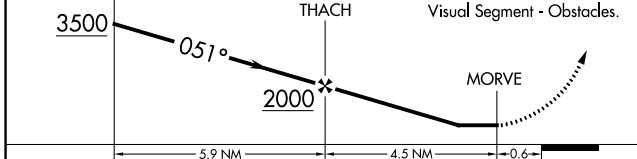
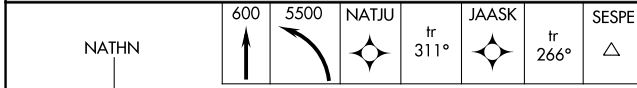
RNP APCH.
 ▼ MISSED APCH FIX
 ▲ Rwy 3 helicopter visibility reduction below ¾ SM NA.

MISSED APPROACH: Climb to 600 then climbing left turn to 5500 direct NATJU and track 311° to JAASK and track 266° to SESPE and hold.
 * Missed approach requires minimum climb of 300 feet per NM to 2400.

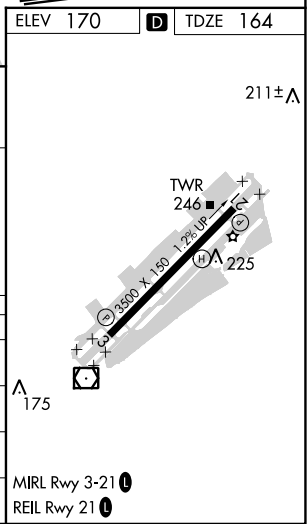
ATIS 119.15	SOCAL APP CON 128.5 235.975	SANTA MONICA TOWER* 120.1 (CTAF) 257.8	GND CON 121.9	UNICOM 122.95
-----------------------	---------------------------------------	--	-------------------------	-------------------------



ELEV 170	TDZE 164
----------	----------



CATEGORY	A	B	C	D
LP MDA*	460-1 296 (300-1)			
LP MDA	920-1 756 (800-1)	920-1¼ 756 (800-1¼)	920-2½	756 (800-2½)
LNAV MDA*	500-1 336 (400-1)	500-1¼ 336 (400-1¼)	500-2½	336 (400-2½)
LNAV MDA	1020-1 856 (900-1)	1020-1¼ 856 (900-1¼)	1020-2½	856 (900-2½)



SW-3, 25 MAR 2021 to 22 APR 2021

SW-3, 25 MAR 2021 to 22 APR 2021

MIRL Rwy 3-21
 REIL Rwy 21