

ILS or LOC RWY 23

FREDERICK MUNI (FDK)

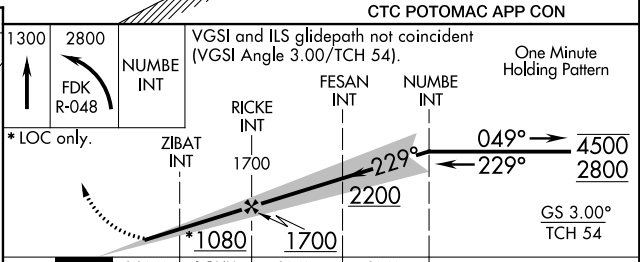
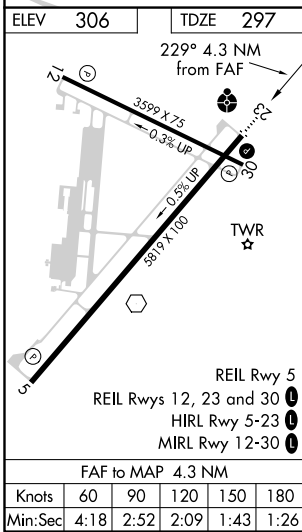
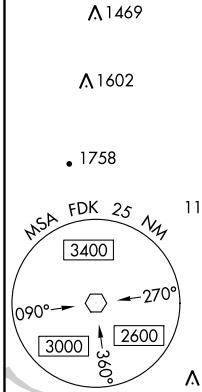
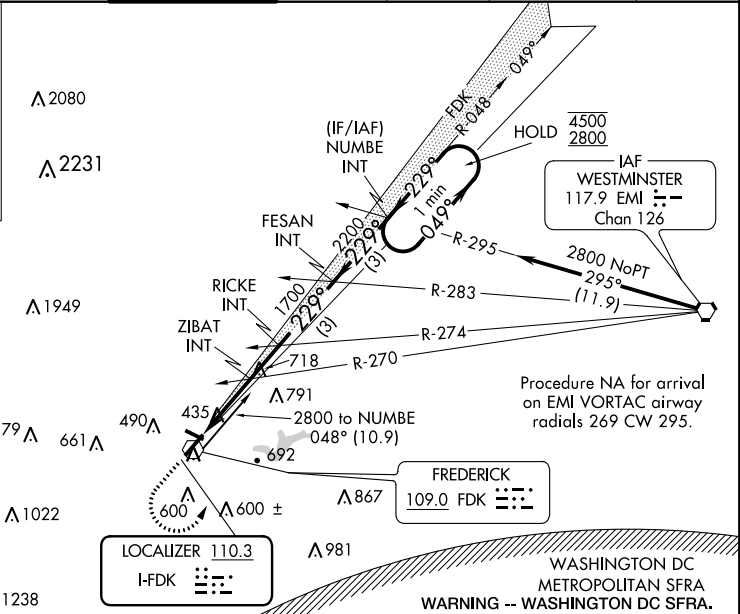
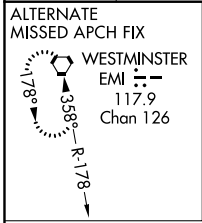
LOC I-FDK 110.3	APP CRS 229°	Rwy ldg TDZE Apt Elev	5819 297 306
---------------------------	------------------------	-----------------------------	---

⚠ Circling Rwy 30 NA at night. Rwy 23 helicopter visibility reduction below ¼ NA. For inop ALS, increase S-ILS 23 Cat A/B visibility to 1½ SM. For inop ALS, increase S-LOC 23 Cat C/D visibility to 2½ SM. ZIBAT fix minimums: Inop table does not apply to S-LOC 23 Cats C/D.

ODALS

MISSED APPROACH: Climb to 1300 then climbing left turn to 2800 on FDK VOR R-048 to NUMBE INT and hold.

ATIS 124.875	POTOMAC APP CON 125.525 291.625	FREDERICK TOWER ★ 132.4 (CTAF) 0	GND CON 121.975	CLNC DEL 121.975	CLNC DEL 126.9 (When twr closed)	UNICOM 122.95
------------------------	---	---	---------------------------	----------------------------	---	-------------------------



CATEGORY	A	B	C	D
S-ILS 23	689-1 392 (400-1)			
S-LOC 23	1080-¾ 783 (800-¾)	1080-1 783 (800-1)	1080-2	783 (800-2)
C CIRCLING	1080-1 774 (800-1)	1080-1¼ 774 (800-1¼)	1100-2½ 794 (800-2½)	1140-2¾ 834 (900-2¾)
ZIBAT FIX MINIMUMS (DUAL VOR RECEIVERS REQUIRED)				
S-LOC 23	1020-¾ 723 (800-¾)	1020-2		723 (800-2)
C CIRCLING	1020-1	714 (800-1)	1100-2¼ 794 (800-2¼)	1140-2¾ 834 (900-2¾)

NE-3, 25 MAR 2021 to 22 APR 2021

NE-3, 25 MAR 2021 to 22 APR 2021