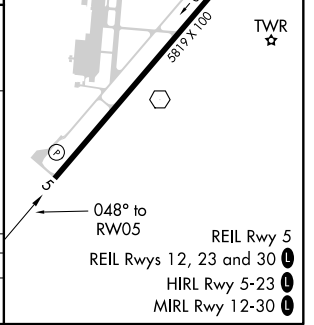
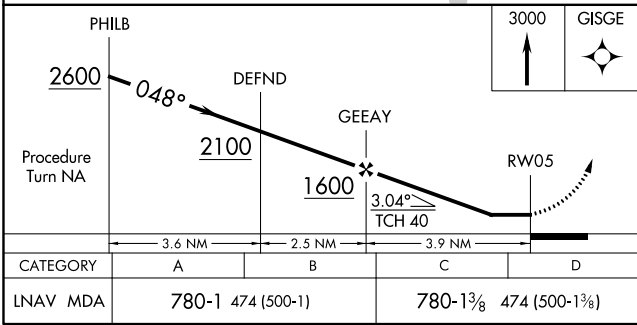
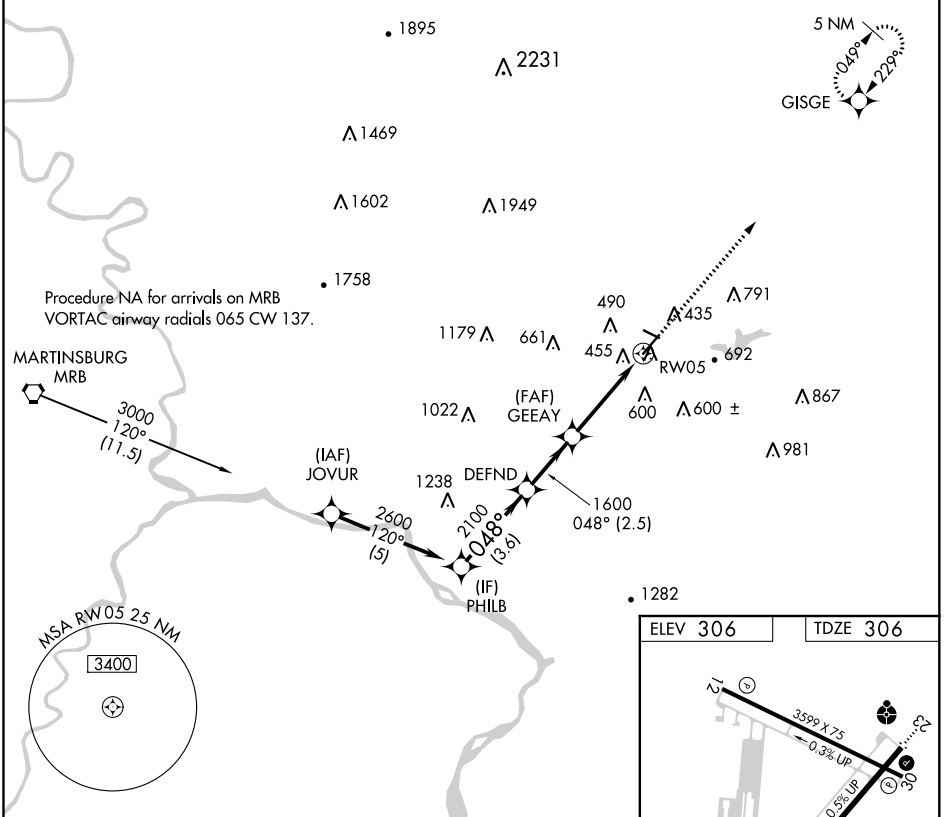


APP CRS <b>048°</b>	Rwy ldg TDZE Apt Elev	<b>5819</b> <b>306</b> <b>306</b>
------------------------	-----------------------------	---

# RNAV (GPS) RWY 5

FREDERICK MUNI (F'DK)

RNP APCH.				MISSED APPROACH: Climb to 3000 direct GISGE and hold.		
⚠ When local altimeter setting not received, use Leesburg altimeter setting and increase all MDA 80 feet; increase LNAV Cat D visibility ¼ SM. Rwy 5 helicopter visibility reduction below ¾ SM NA.						
ATIS <b>124.875</b>	POTOMAC APP CON <b>125.525 291.625</b>	FREDERICK TOWER ★ <b>132.4</b> (CTAF) <b>0</b>	GND CON <b>121.975</b>	CLNC DEL <b>121.975</b>	CLNC DEL <b>126.9</b> (When twr closed)	UNICOM <b>122.95</b>



NE-3, 25 MAR 2021 to 22 APR 2021

NE-3, 25 MAR 2021 to 22 APR 2021