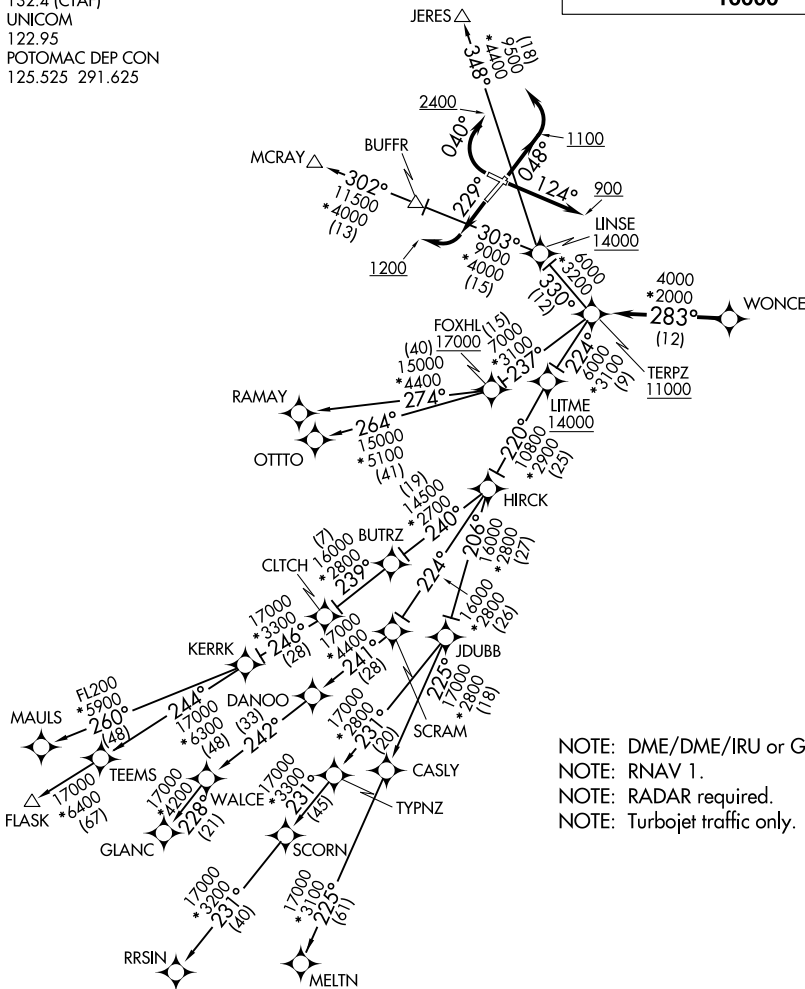


TERPZ SEVEN DEPARTURE (RNAV)

FREDERICK, MARYLAND

ATIS
 124.875
 CLNC DEL
 121.975
 GND CON
 121.975
 FREDERICK TOWER*
 132.4 (CTAF)
 UNICOM
 122.95
 POTOMAC DEP CON
 125.525 291.625

TOP ALTITUDE:
RAMAY, OTTTO, MAULS, FLASK,
RRSIN, GLANC, MELTN
TRANSITIONS: 17000
JERES, MCRAY TRANSITIONS:
16000



NOTE: DME/DME/IRU or GPS required.
 NOTE: RNAV 1.
 NOTE: RADAR required.
 NOTE: Turbojet traffic only.

TAKEOFF MINIMUMS:

- Rwy 23: Standard.
- Rwy 5: Standard with minimum climb of 260' per NM to 1100.
- Rwy 12: 500-2³/₄ or Standard with minimum climb of 395' per NM to 1000.
- Rwy 30: Standard with minimum climb of 285' per NM to 900.

NOTE: Chart not to scale.

NE-3, 25 MAR 2021 to 22 APR 2021

NE-3, 25 MAR 2021 to 22 APR 2021

TERPZ SEVEN DEPARTURE (RNAV)

(TERPZ7.TERPZ) 26MAR20

FREDERICK, MARYLAND
FREDERICK MUNI (F'DK)