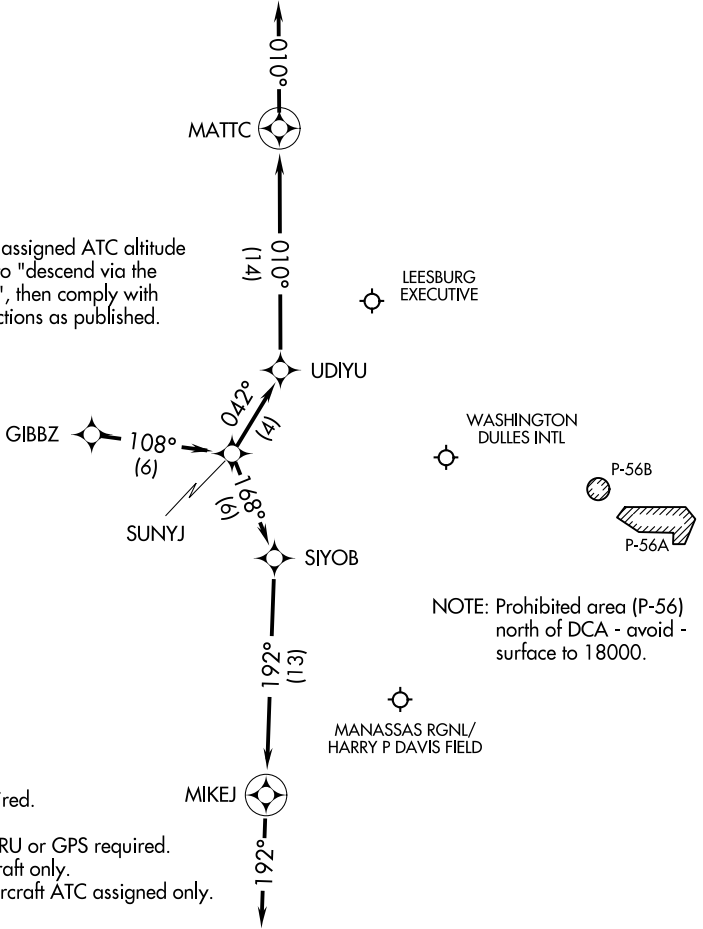


GIBBZ FOUR ARRIVAL (RNAV) Arrival Routes

WASHINGTON, DC

POTOMAC APP CON
120.45 306.925
HEF ATIS
125.175
IAD D-ATIS
134.85

NOTE: Maintain last assigned ATC altitude until cleared to "descend via the GIBBZ FOUR", then comply with altitude restrictions as published.



- NOTE: RADAR required.
- NOTE: RNAV 1.
- NOTE: DME/DME/IRU or GPS required.
- NOTE: Turbojet aircraft only.
- NOTE: Turboprop aircraft ATC assigned only.

NOTE: Prohibited area (P-56) north of DCA - avoid - surface to 18000.

NOTE: Chart not to scale.

ARRIVAL ROUTE DESCRIPTION

LANDING RUNWAYS 1L/C/R, 30: From GIBBZ on track 108° to SUNYJ, then on track 168° to SIYOB, then on track 192° to MIKEJ, then on track 192°. Expect radar vectors to final approach course.

LANDING RUNWAYS 19L/C/R: From GIBBZ on track 108° to SUNYJ, then on track 042° to UDIYU, then on track 010° to MATTC, then on track 010°. Expect radar vectors to final approach course.

NE-3, 25 MAR 2021 to 22 APR 2021

NE-3, 25 MAR 2021 to 22 APR 2021